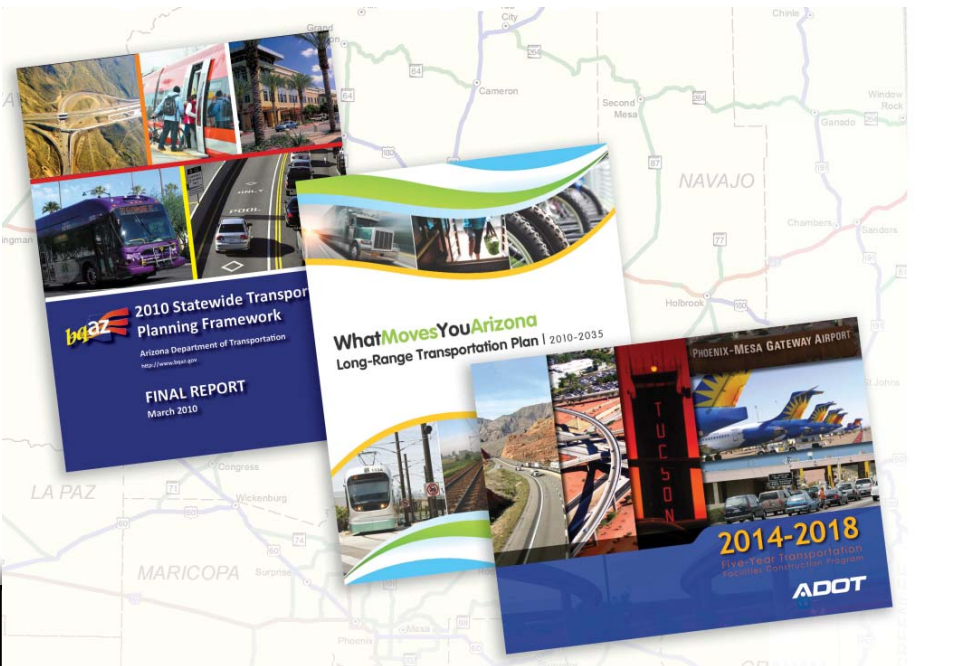


# Planning to Programming Linkage (P2P)

ADOT Vision and Long-Range Plan

Prototyping P2P

Implementation for Performance Based Programming



# VISIONING to PROGRAMMING

March 2011



How do transportation projects move from initial visioning stages to programming (funding for construction)?

## VISION

## PLAN

## PROGRAM

### UNIVERSE OF PROJECTS

The existing universe of projects was defined through the bqAZ Statewide Transportation Planning Framework.



### PROJECT TYPE

Projects are sorted into four main project categories

### PERCENTAGE OF FUNDS

Goals and objectives from the Long-Range Transportation Plan are used to determine funding for projects in each category

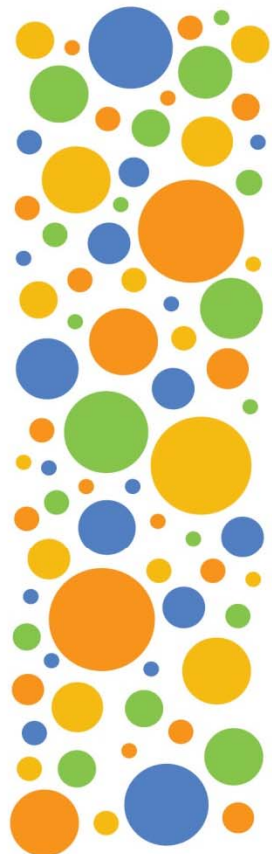
### PERFORMANCE SCORING

Projects are scored based upon specific "Performance Measure" criteria (such as pavement condition, congestion levels, travel time)



### PRIORITIZATION

Best performing projects are programmed to receive funding through the 5-Year Plan



PROJECT TYPE



#### MODERNIZATION

add shoulders  
straighten curves % →



#### EXPANSION

add lanes  
new highways  
HOV lanes % →



#### PRESERVATION

pavement  
bridges % →



#### NON-HIGHWAY MODES

rail  
transit  
air % →

PERFORMANCE CRITERIA



5 - YEAR PLAN



1 2 3

# P2P Link Goal

To create a performance-based  
process that links planning to  
programming

*transparent, defensible, logical,  
reproducible*

# Linking Planning to Programming

