

FY 2016 – 2020

Proposed Five-Year Transportation Facilities Construction Program

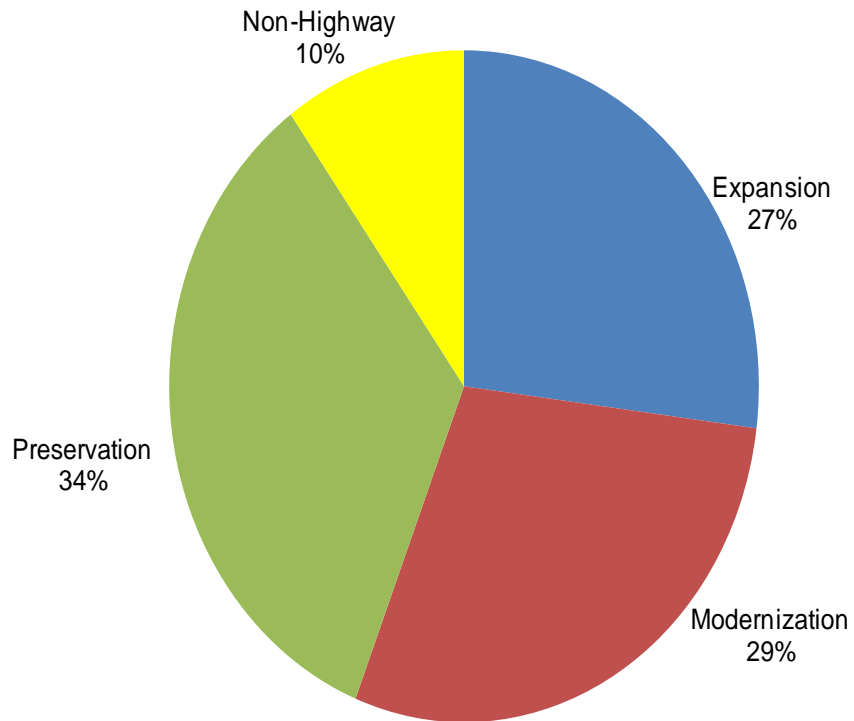
**Michael Kies, Assistant Director
Multimodal Planning Division**

Public Comments

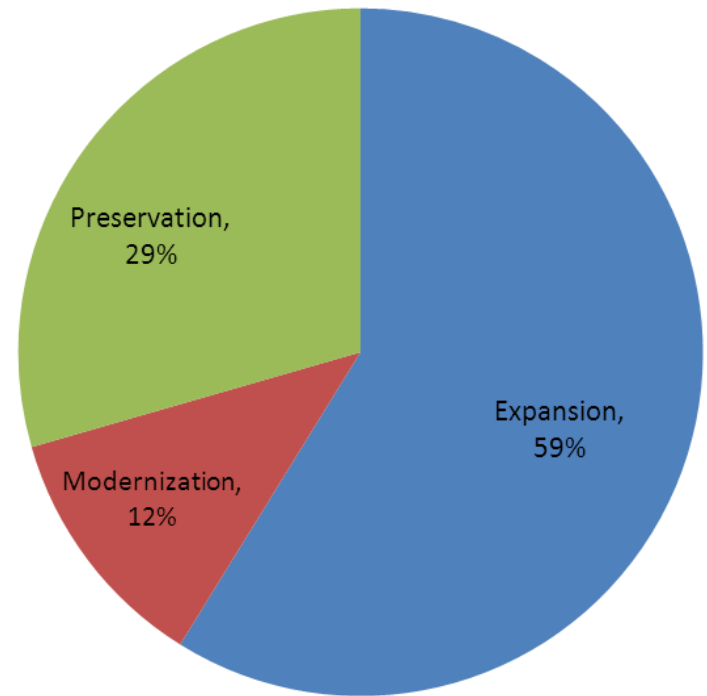
- ▶ ADOT Conducted 3 Public Meetings held in Tucson, Phoenix, and Chino Valley
- ▶ Public submits comments via the web, in person, written, etc...
- ▶ As of May 22nd, 2015 There have been 46 comments received

2016-2020 Tentative Facilities Construction Program

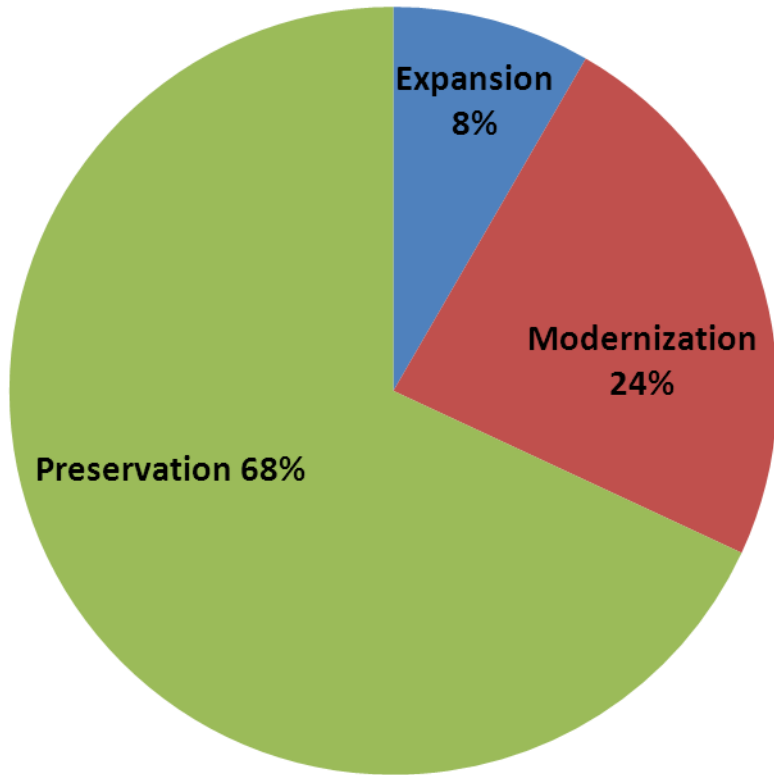
► Recommended Investment Choice (RIC)



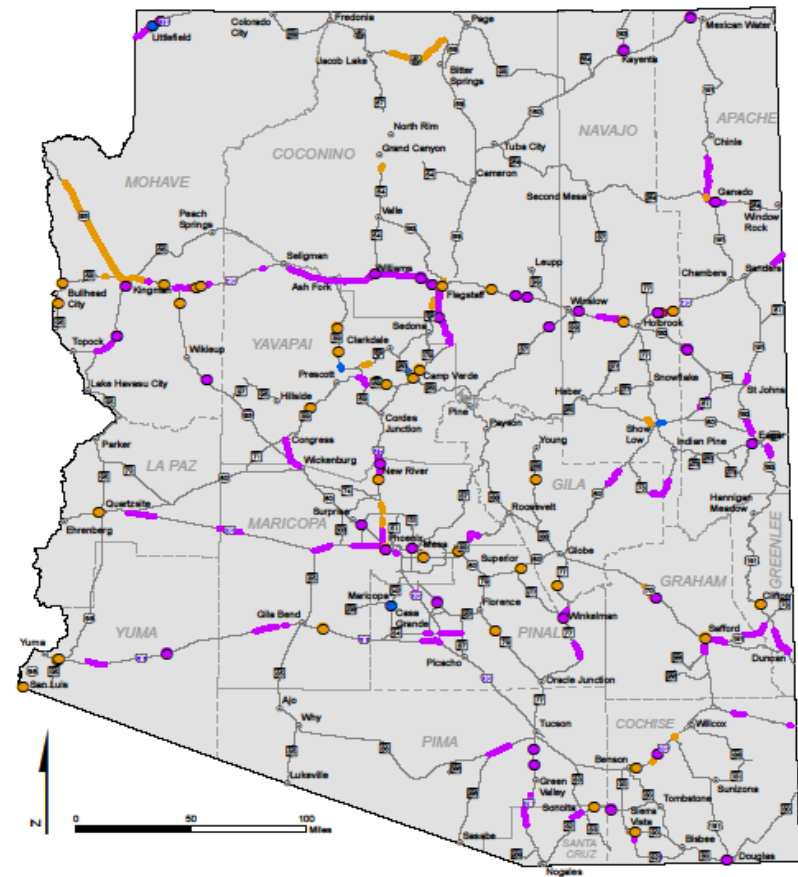
2016-2020 Statewide Program Greater AZ, MAG & PAG



Greater Arizona Tentative 5-Year Highway Delivery Program(FY16- FY20)



Tentative 2016-2020 Five-Year
Transportation Facilities Construction Program



Projects

- Expansion
- Modernization
- Preservation
- Expansion
- Modernization
- Preservation
- Cities and Towns
- State Highway System
- County Boundary
- State Boundary

Note:
The State of Arizona makes no claims
concerning the accuracy of this map
nor assumes any liability resulting from
the use of the information herein.

Prepared by:
Arizona Department of Transportation
Multimodal Planning Division
Transportation Analysis GIS Section
602.712.7333 January 2015



Program Funding Overview

Greater Arizona

	2016	2017	2018	2019	2020	
Available to Program	\$414,429	\$319,100	\$345,100	\$366,900	\$319,000	\$1,764,529
Projects	\$306,269	\$200,200	\$203,488	\$179,622	\$102,6795	\$992,276
Sub Programs	\$108,160	\$118,900	\$141,612	\$187,278	\$216,303	\$772,253

Dollars are in (000)

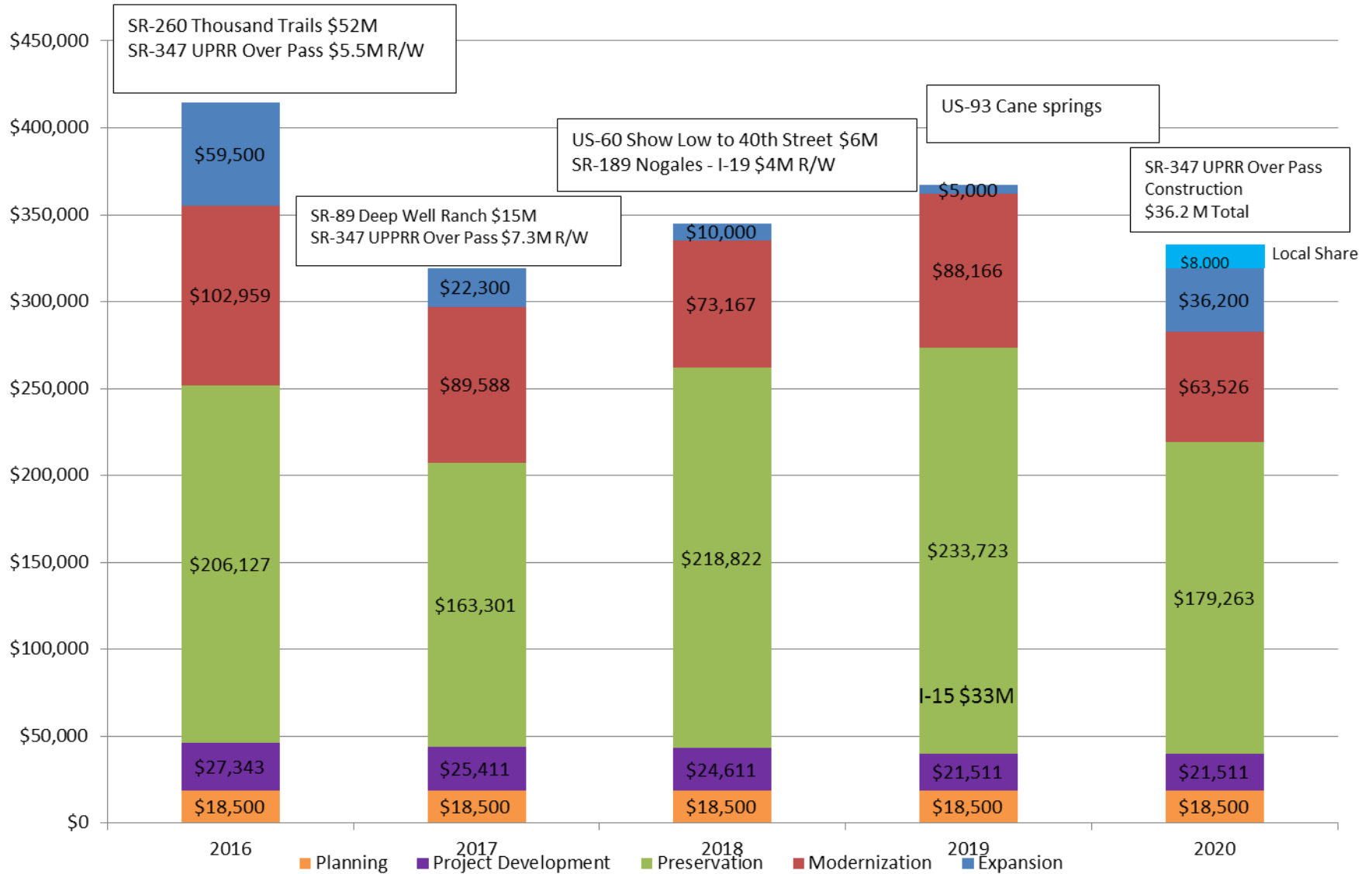
Review of Basic Changes

- ▶ Updated Project Cost
- ▶ Adjust Program for FY15 Year End activities.

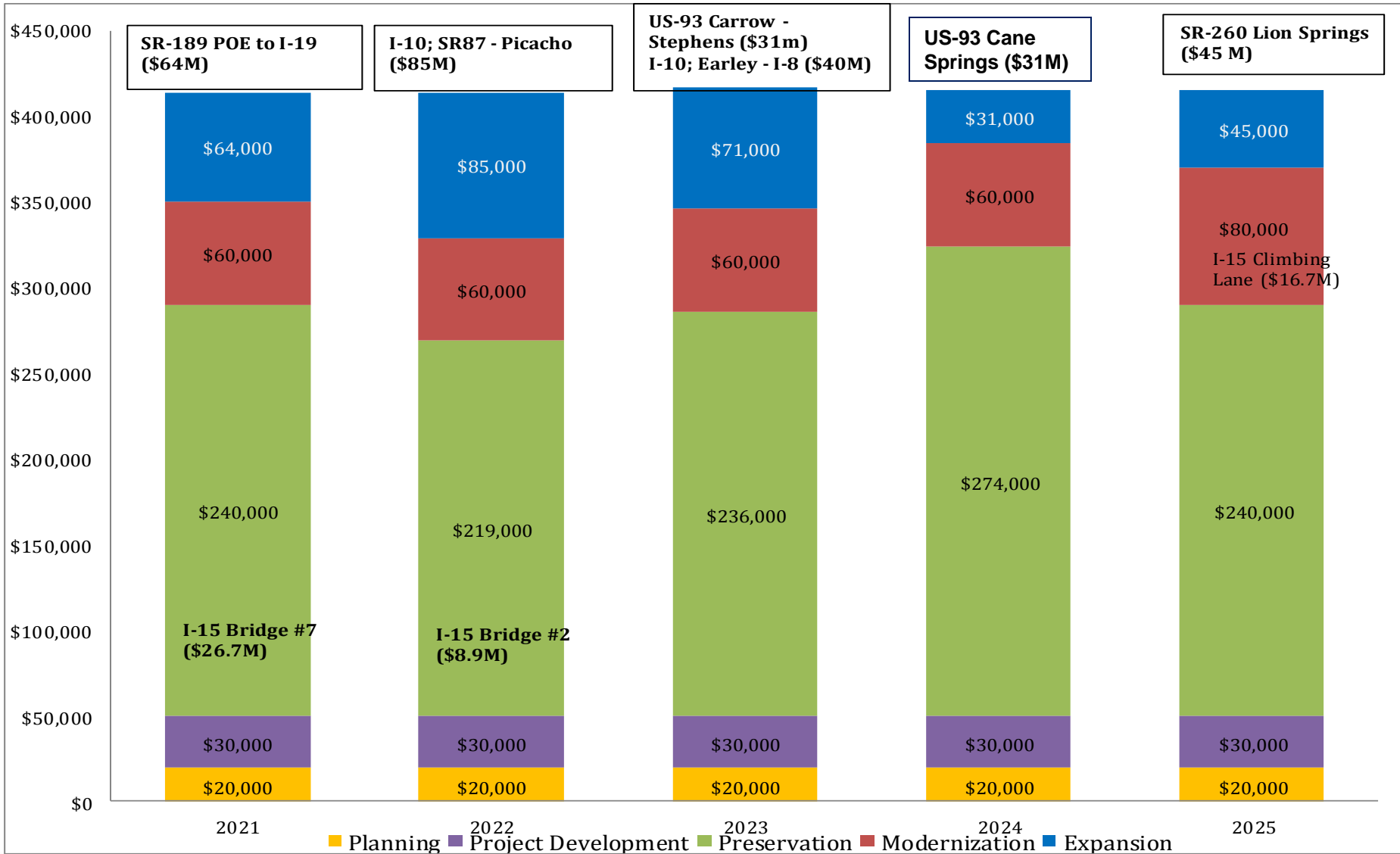
Activity since publication of Tentative Program (Greater AZ)

Projects Advanced to FY15	\$(50.4 M)
New Projects or Projects Deferred from FY15	\$ 30.5 M
Update Project Costs	\$ 75.6 M (Net)
Subprogram Adjustments	\$(55.7 M)

Delivery Program 2016-2020 Proposed Program

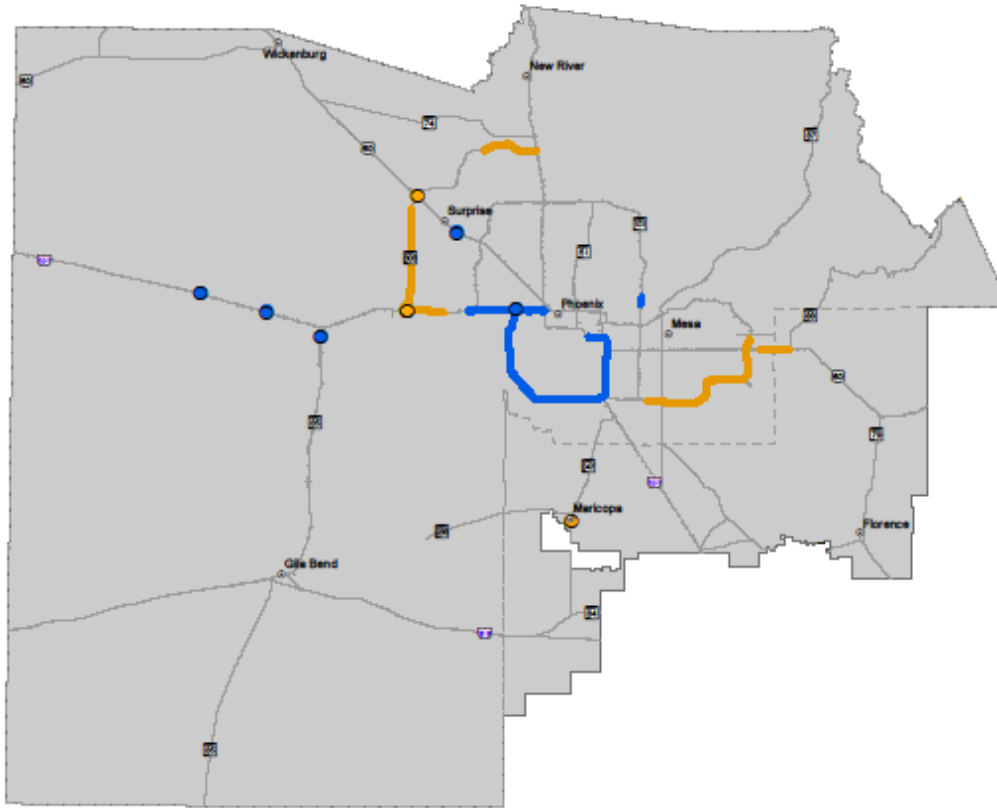


Development Program 2021-2025



MAG Area Freeway Program (FY16- FY20)

Statewide 2016-2020 Five Year
 Transportation Facilities Construction Program
 MAG RTP Freeway Program



Projects

- Expansion
- Modernization
- Expansion
- Modernization
- Cities and Towns
- State Highway System
- County Boundary
- MAG Boundary

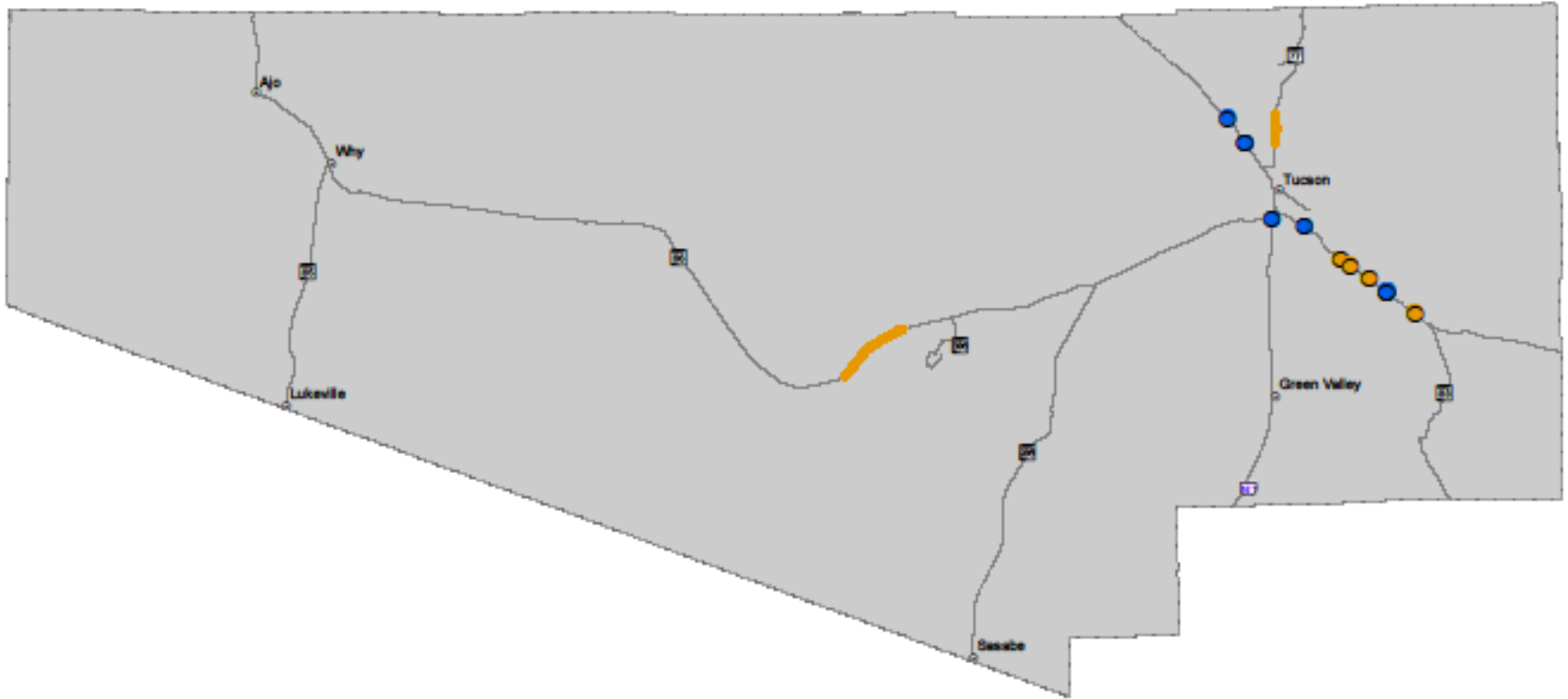
ADOT



Note:
 The State of Arizona makes no claims concerning the accuracy of this map nor assumes any liability resulting from the use of the information herein.

Prepared by:
 Arizona Department of Transportation
 Multimodal Planning Division
 Transportation Analysis GIS Section
 602.712.7333 January 2016

PAG Tentative Program(FY16- FY20)



Project Updates

SR 260 Thousand Trails to I-17

- The project would complete the conversion from 2 lanes to a 4 lane divided highway between Camp Verde and Cottonwood.
- Current Status –
 - CMAR Delivery; CMAR and Designer on board (5/5/15)
 - Environmental Clearance anticipated June 1st
 - Construction start expected March 2016
- Current Cost Estimate –
 - \$62 Million (\$10M for R/W and Utilities advanced to FY15)
 - \$52 Million programmed in FY16
- Delivery Risk – Utility issues, including Camp Verde Water relocation

SR89 – Jct. SR89A to Deep Well Ranch Road

- The project is located in Yavapai Co. and will widen the SR-89 corridor to improve capacity. Coordinated with Willow Creek Bypass project to be completed Dec 2016.
- Current Status –
 - 30% Design is complete
 - Environmental Clearance anticipated Jan 2016
 - Advertise for Construction anticipated 3rd Quarter FY17.
- Current Cost Estimate - \$15 Million including R/W
- Delivery Risk –
 - City of Prescott project to be completed in advance of advertisement for this project. Utility relocations

SR 347 Overpass; Project Status

- The project would construct a new SR347 grade separated crossing over the UPRR Mainline, including relocation of the existing AMTRAK station
- Current Status –
 - Environmental Clearance received in March 2015
 - Design Phase will start summer of 2015
- Current Cost Estimate - \$55 Million (\$8 Million Local)
 - Costs Phased over several Fiscal Years
- Delivery Risk – Numerous property takes and utility relocations

SR-189 Design Concept Report and Environmental Assessment

- The study is located in Santa Cruz Co. and will improve operations along the SR-189 corridor.
- Current Status – Ongoing study, DCR and EA underway, proposed build alternative anticipated June 2015.
- Current Cost Estimate –
 - \$4 M for Design in FY 18,
 - \$ 65 M for Construction in Development Program (FY 21)
- Delivery Risk – None identified

2016-2020 Program

