

Arizona State Transportation Board

Financial Report

Presentation by: Kristine Ward, CFO

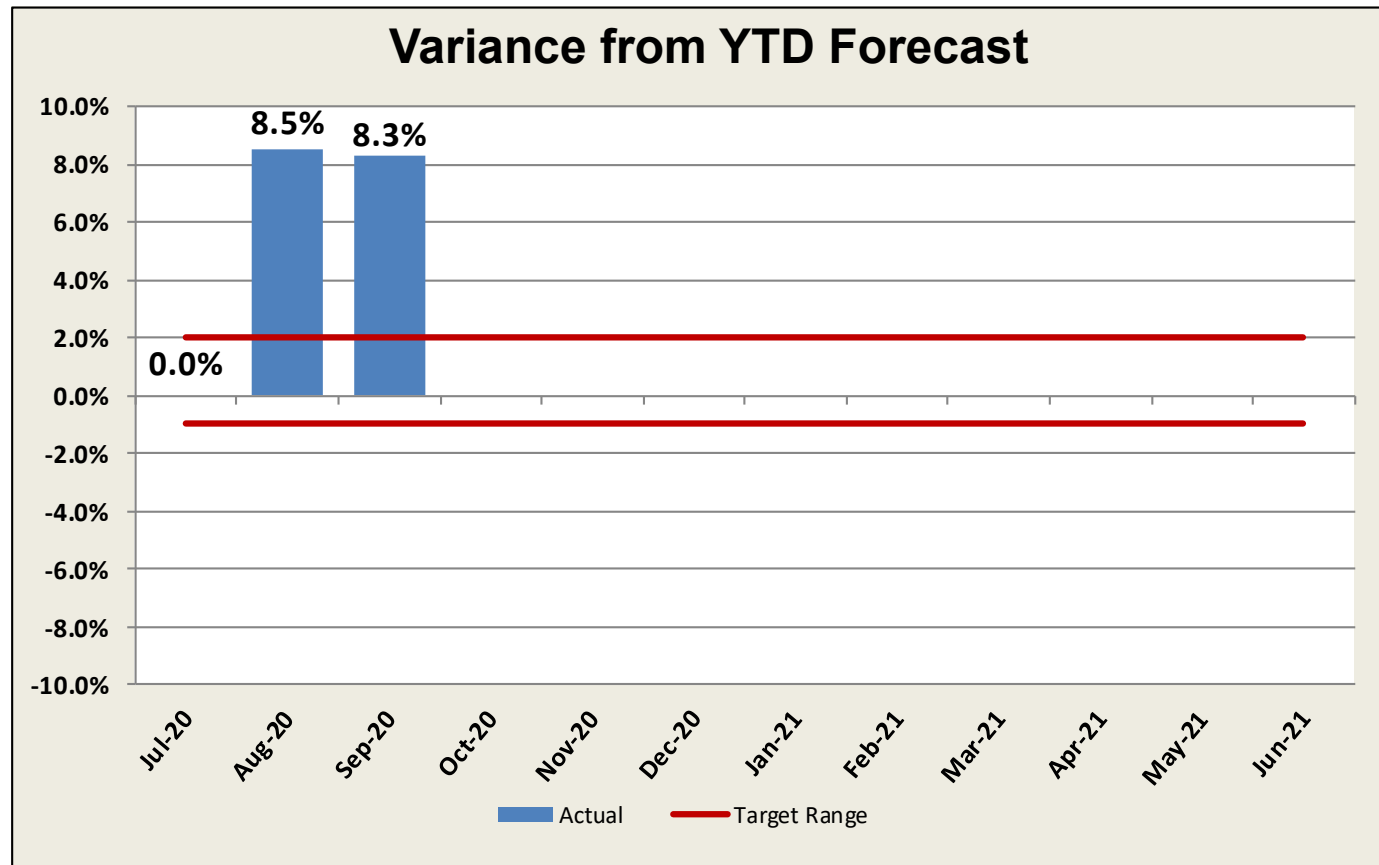
October 16, 2020

Revenue Report:

Highway User Revenue Fund (HURF)



- **Gas tax** – Strong decline month (-10.6%), moderate decline FY21 (-10.6%)
- **Diesel tax** – Moderate growth month (2.7%), moderate growth FY21 (3.0%)
- **VLT** – Strong growth month (23.5%), strong growth FY21 (21.2%)
- **Registration** – Strong growth month (19.5%), strong growth FY21 (14.5%)



Highway User Revenue Fund (HURF): Revenue Forecast vs. Actual

Revenue Category	September				
	FY 2020 Actual	FY 2021 Actual	FY 2020- FY 2021 % Chg	FY 2021 Forecast	FY 2021 % Chg from Forecast
Gasoline Tax	\$47,324	\$42,318	-10.6%	\$41,980	0.8%
Use Fuel Tax	21,088	21,666	2.7%	21,300	1.7%
Vehicle License Tax	37,968	46,872	23.5%	39,870	17.6%
Motor Carrier Fee	3,429	4,043	17.9%	3,640	11.1%
Registration	14,208	16,985	19.5%	14,890	14.1%
Other	4,175	3,293	-21.1%	3,650	-9.8%
Total	\$128,192	\$135,177	5.4%	\$125,330	7.9%

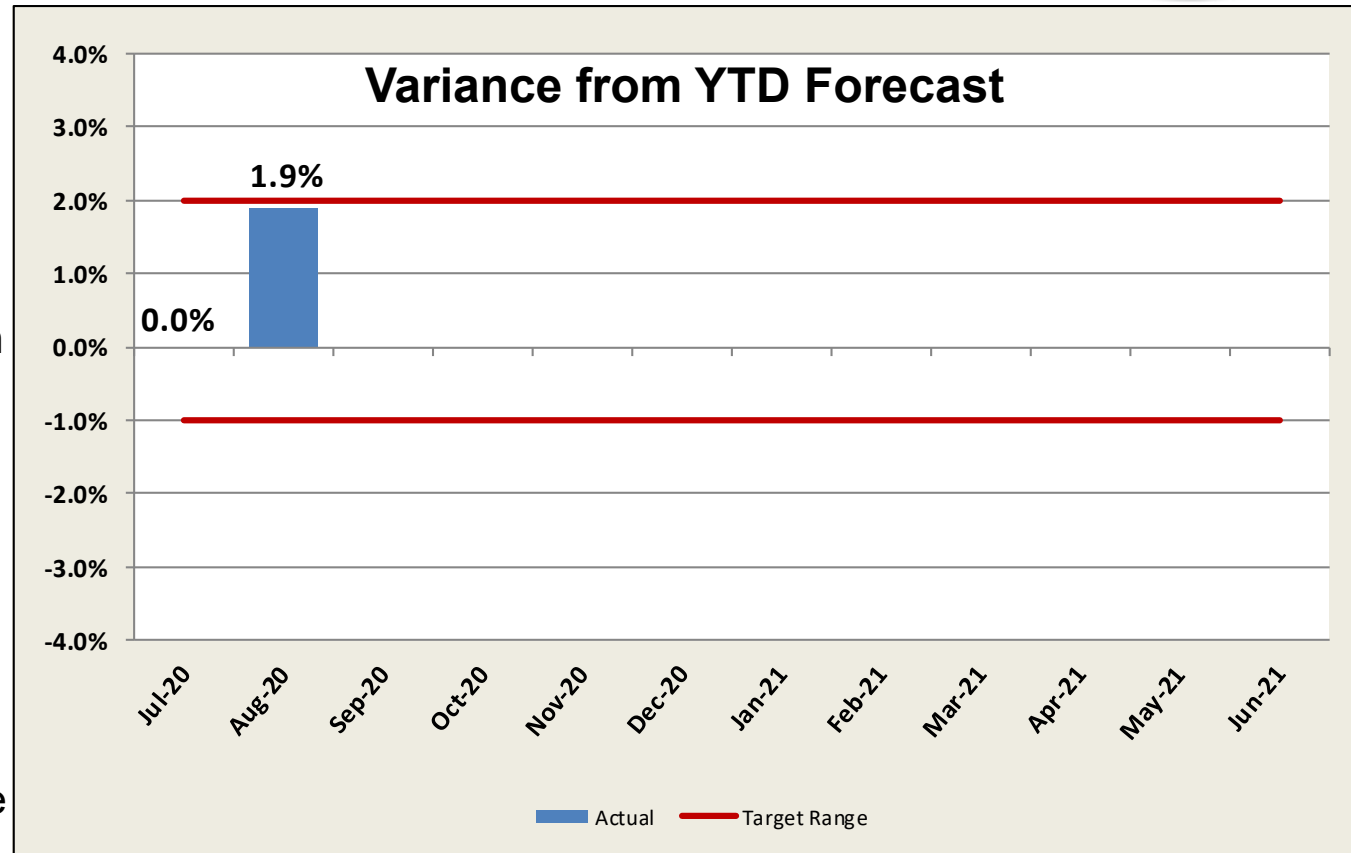
Revenue in Thousands

Revenue Report:

Regional Area Road Fund (RARF)



- **Retail sales** – Strong growth month (17.5%), strong growth FY 2021 (19.3%)
- **Contracting** – Moderate growth month (6.8%), moderate growth FY 2021 (10.8%)
- **Restaurant & Bar** – Strong decline month (-15.6%), strong decline FY 2021 (-14.3%)



Regional Area Road Fund (RARF): Revenue Forecast vs. Actual

Revenue Category	August				
	FY 2020 Actual	FY 2021 Actual	FY 2020- FY 2021 % Chg	FY 2021 Forecast	FY 2021 % Chg from Forecast
Retail Sales	\$20,549	\$24,135	17.5%	\$23,631	2.1%
Contracting	4,723	5,046	6.8%	5,337	-5.5%
Utilities	3,841	3,951	2.9%	4,225	-6.5%
Restaurant & Bar	3,987	3,363	-15.6%	3,189	5.5%
Rental of Real Property	3,734	3,520	-5.7%	3,884	-9.4%
Rental of Personal Property	1,541	1,400	-9.2%	1,387	0.9%
Other	1,036	2,560	147.2%	651	293.2%
Total	\$39,410	\$43,976	11.6%	\$42,304	4.0%

Revenue in Thousands

Additional Updates

- **Federal Aid Program**



- **Debt Financing Program**

- HURF Capacity
- RARF Capacity

- **Cash Management**

