

Arizona State Transportation Board

Financial Report

Presentation by: Kristine Ward, CFO

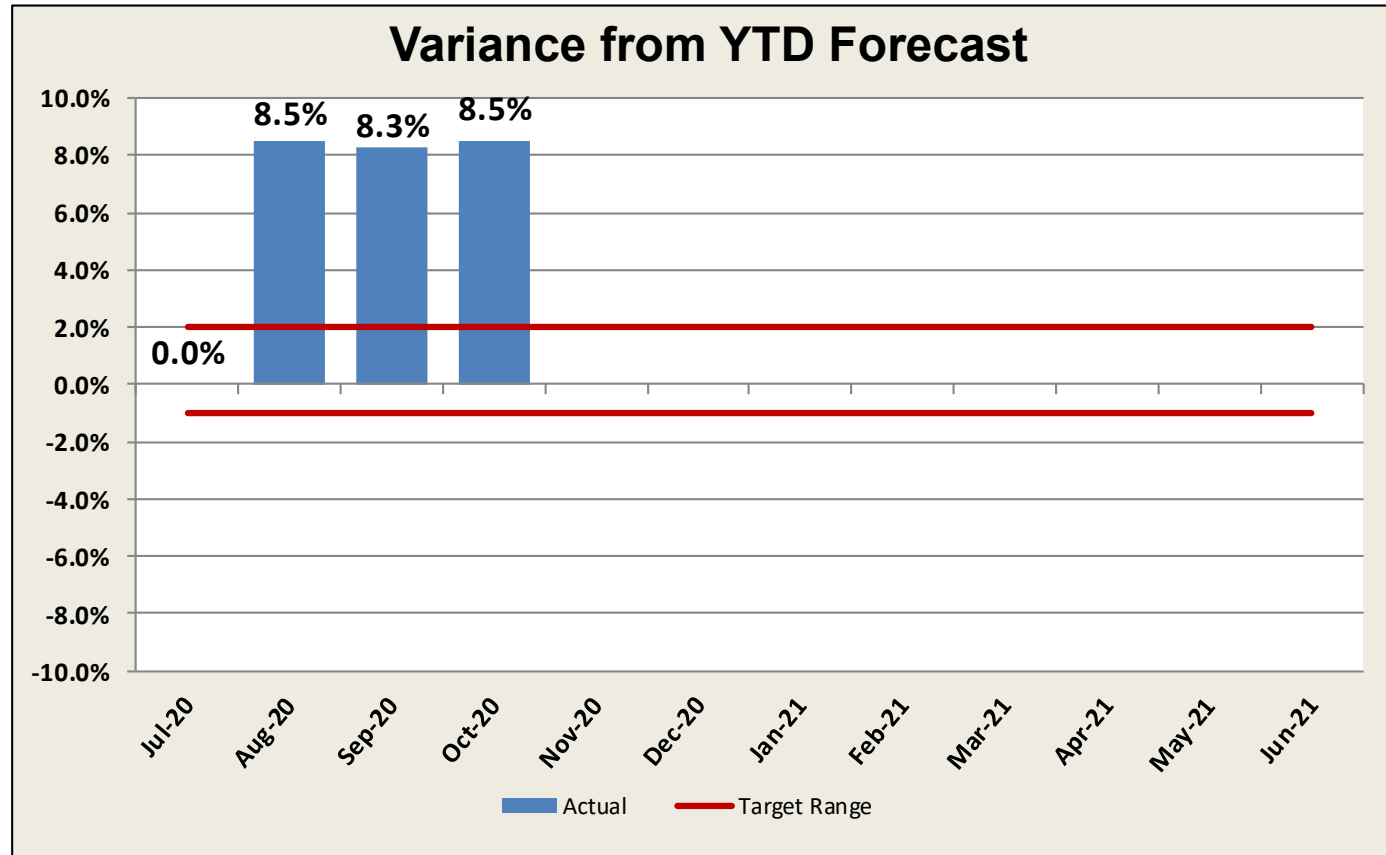
November 20, 2020

Revenue Report:

Highway User Revenue Fund (HURF)



- **Gas tax** – Strong decline month (-7.2%), strong decline FY21 (-9.7%)
- **Diesel tax** – Moderate growth month (5.3%), moderate growth FY21 (3.6%)
- **VLT** – Strong growth month (19.6%), strong growth FY21 (20.8%)
- **Registration** – Strong growth month (22.8%), strong growth FY21 (16.5%)



Highway User Revenue Fund (HURF): Revenue Forecast vs. Actual

Revenue Category	October				
	FY 2020 Actual	FY 2021 Actual	FY 2020- FY 2021 % Chg	FY 2021 Forecast	FY 2021 % Chg from Forecast
Gasoline Tax	\$44,754	\$41,554	-7.2%	\$39,830	4.3%
Use Fuel Tax	19,985	21,038	5.3%	20,380	3.2%
Vehicle License Tax	39,758	47,537	19.6%	41,750	13.9%
Motor Carrier Fee	3,312	4,235	27.9%	3,610	17.3%
Registration	14,293	17,552	22.8%	15,250	15.1%
Other	3,769	3,892	3.3%	3,530	10.3%
Total	\$125,872	\$135,808	7.9%	\$124,350	9.2%

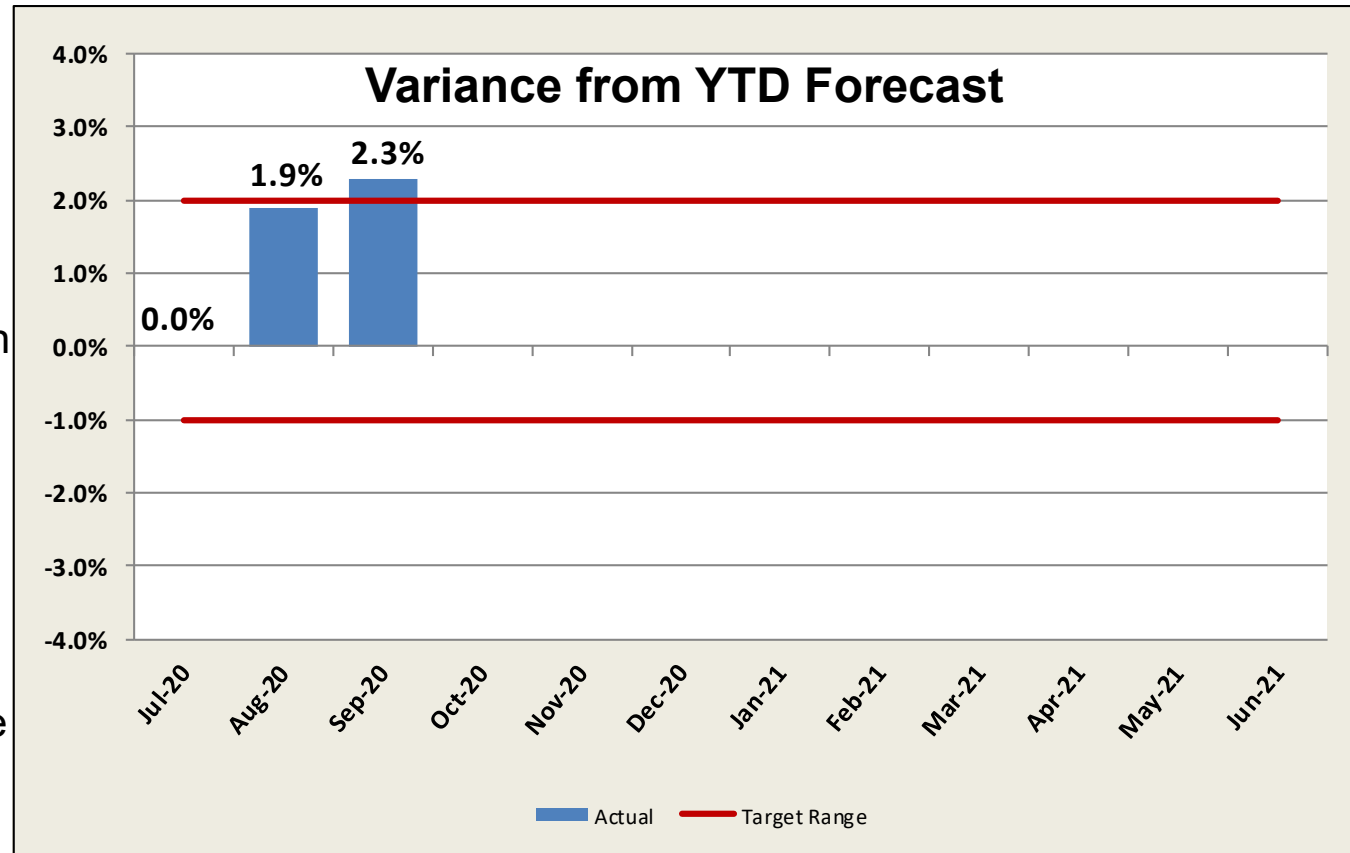
Revenue in Thousands

Revenue Report:

Regional Area Road Fund (RARF)



- **Retail sales** – Strong growth month (18.7%), strong growth FY 2021 (19.1%)
- **Contracting** – Moderate decline month (-1.2%), moderate growth FY 2021 (6.7%)
- **Restaurant & Bar** – Strong decline month (-13.6%), strong decline FY 2021 (-14.0%)



Regional Area Road Fund (RARF): Revenue Forecast vs. Actual

Revenue Category	September				
	FY 2020 Actual	FY 2021 Actual	FY 2020- FY 2021 % Chg	FY 2021 Forecast	FY 2021 % Chg from Forecast
Retail Sales	\$21,034	\$24,976	18.7%	\$23,558	6.0%
Contracting	4,854	4,797	-1.2%	5,340	-10.2%
Utilities	3,921	4,260	8.7%	4,234	0.6%
Restaurant & Bar	4,203	3,633	-13.6%	3,447	5.4%
Rental of Real Property	3,408	3,459	1.5%	3,442	0.5%
Rental of Personal Property	1,421	1,319	-7.2%	1,308	0.9%
Other	1,229	915	-25.6%	795	15.1%
Total	\$40,071	\$43,358	8.2%	\$42,124	2.9%

Revenue in Thousands

Additional Updates

- **Federal Aid Program**



- **Debt Financing Program**

- HURF Capacity
- RARF Capacity

- **Cash Management**

