

Arizona State Transportation Board

Financial Report

Presentation by: Kristine Ward, CFO

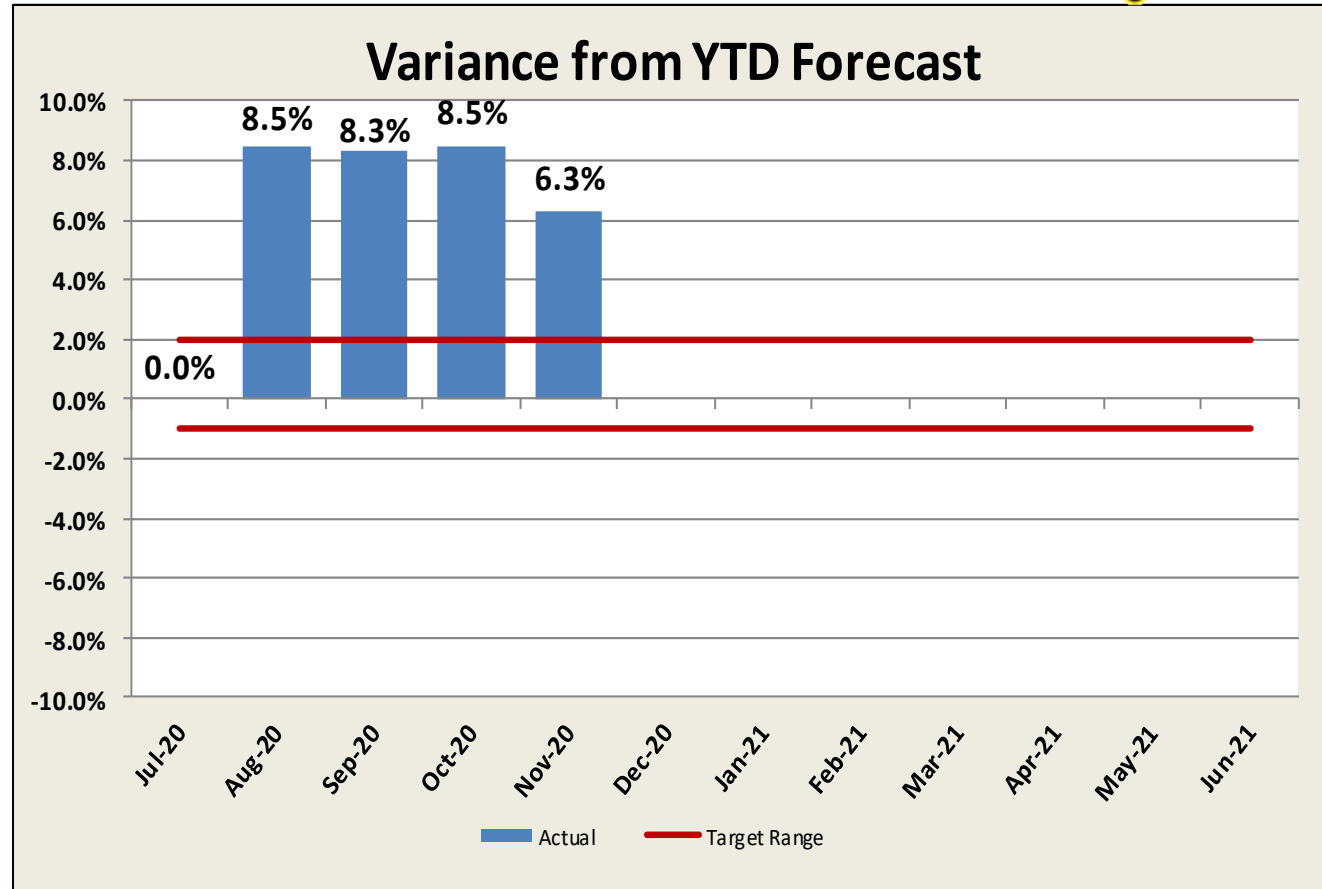
December 18, 2020

Revenue Report:

Highway User Revenue Fund (HURF)



- **Gas tax** – Strong decline month (-5.7%), strong decline FY21 (-8.9%)
- **Diesel tax** – Moderate growth month (8.5%), moderate growth FY21 (4.6%)
- **VLT** – Strong decline month (-11.3%), strong growth FY21 (14.2%)
- **Registration** – Moderate decline month (-1.6%), strong growth FY21 (12.7%)



Highway User Revenue Fund (HURF): Revenue Forecast vs. Actual

Revenue Category	November				
	FY 2020 Actual	FY 2021 Actual	FY 2020- FY 2021 % Chg	FY 2021 Forecast	FY 2021 % Chg from Forecast
Gasoline Tax	\$46,094	\$43,483	-5.7%	\$42,410	2.5%
Use Fuel Tax	18,274	19,836	8.5%	18,270	8.6%
Vehicle License Tax	42,079	37,321	-11.3%	42,920	-13.0%
Motor Carrier Fee	3,793	3,754	-1.0%	3,830	-2.0%
Registration	15,643	15,398	-1.6%	15,670	-1.7%
Other	4,045	4,113	1.7%	3,640	13.0%
Total	\$129,928	\$123,905	-4.6%	\$126,740	-2.2%

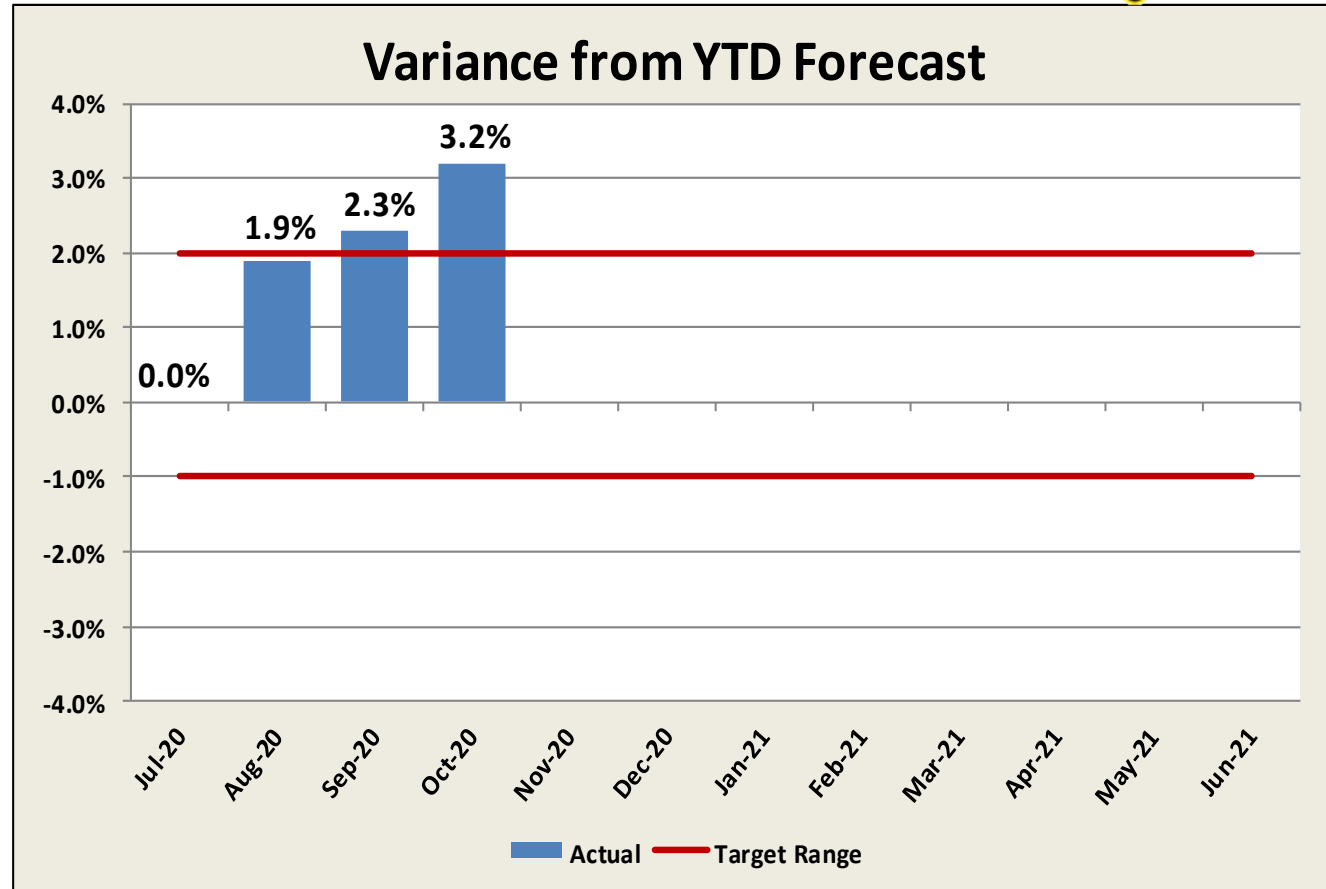
Revenue in Thousands

Revenue Report:

Regional Area Road Fund (RARF)



- **Retail sales** – Strong growth month (27.1%), strong growth FY 2021 (21.1%)
- **Contracting** – Moderate decline month (1.8%), moderate growth FY 2021 (5.5%)
- **Restaurant & Bar** – Strong decline month (-10.1%), strong decline FY 2021 (-13.0%)



Regional Area Road Fund (RARF): Revenue Forecast vs. Actual

Revenue Category	October				
	FY 2020 Actual	FY 2021 Actual	FY 2020- FY 2021 % Chg	FY 2021 Forecast	FY 2021 % Chg from Forecast
Retail Sales	\$20,242	\$25,728	27.1%	\$22,873	12.5%
Contracting	4,460	4,541	1.8%	4,906	-7.4%
Utilities	3,754	3,811	1.5%	3,747	1.7%
Restaurant & Bar	4,342	3,903	-10.1%	3,777	3.3%
Rental of Real Property	4,078	3,884	-4.7%	4,118	-5.7%
Rental of Personal Property	1,460	1,504	3.0%	1,344	11.9%
Other	1,229	859	-30.1%	840	2.2%
Total	\$39,564	\$44,229	11.8%	\$41,605	6.3%

Revenue in Thousands

Additional Updates

- **Federal Aid Program**



- **Debt Financing Program**

- HURF Capacity
- RARF Capacity

- **Cash Management**

