

# **State Transportation Board Meeting**

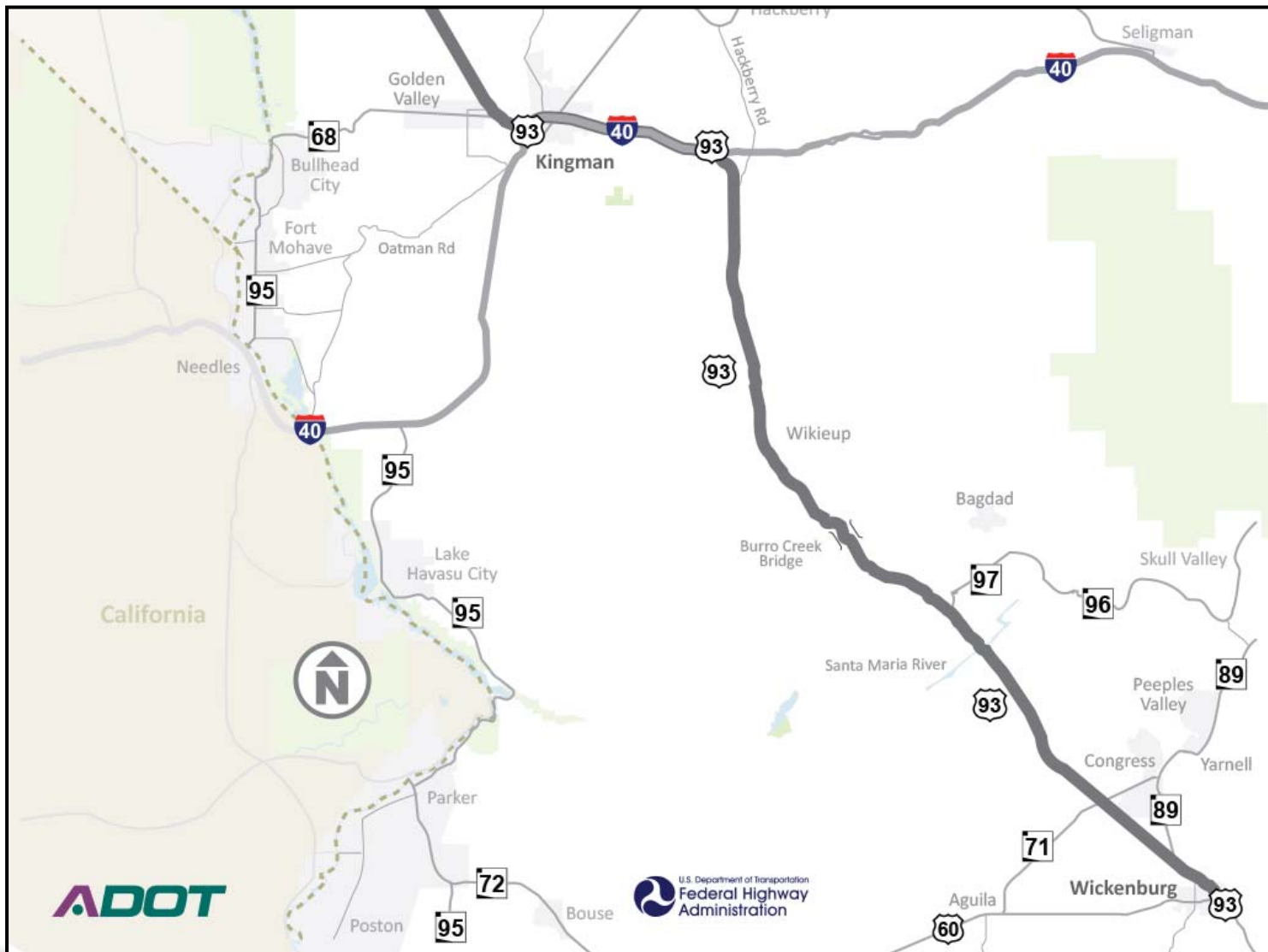
## **US93 Corridor Update**

### **ADOT Kingman District**

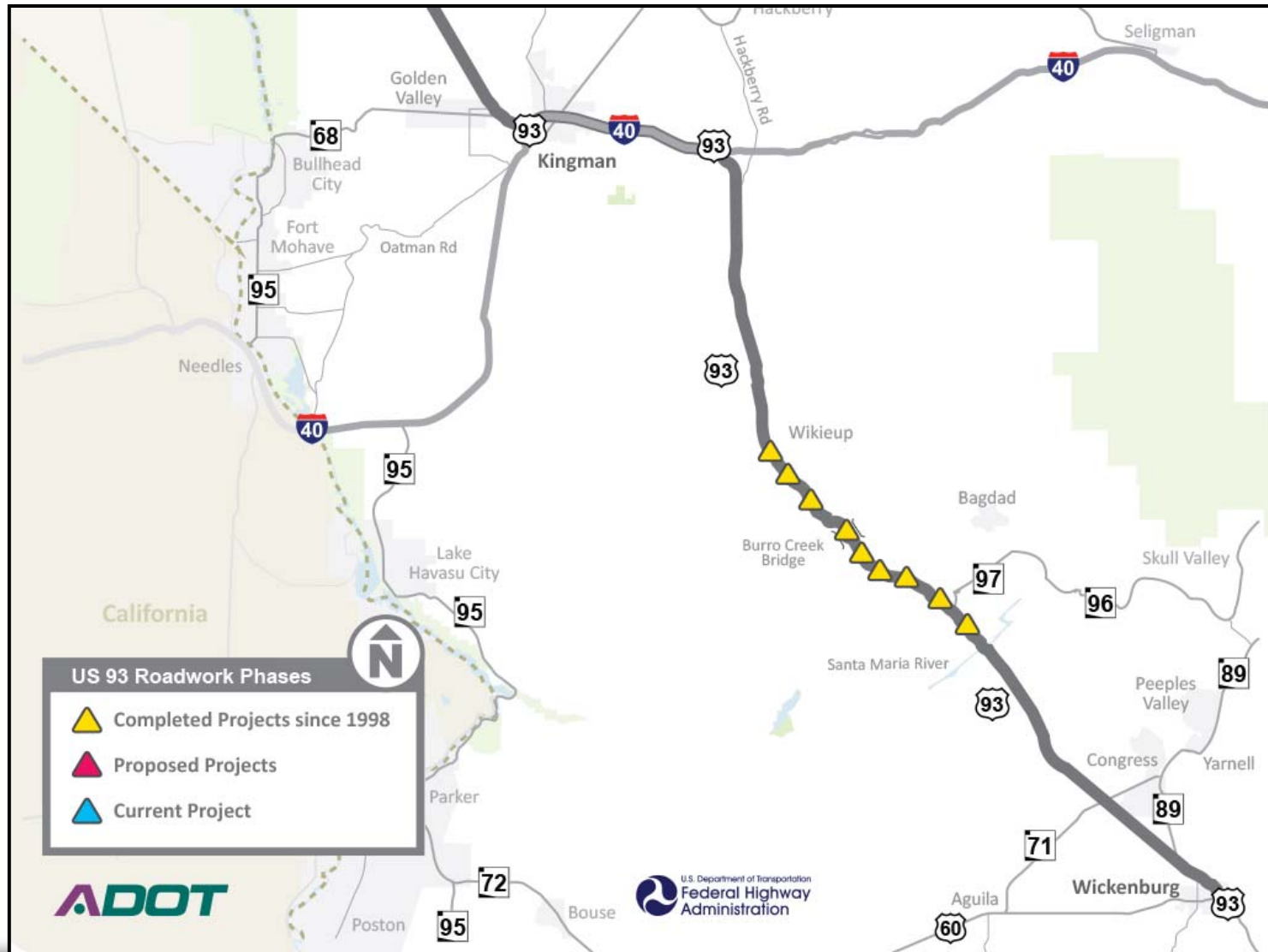
#### **March 20, 2015**



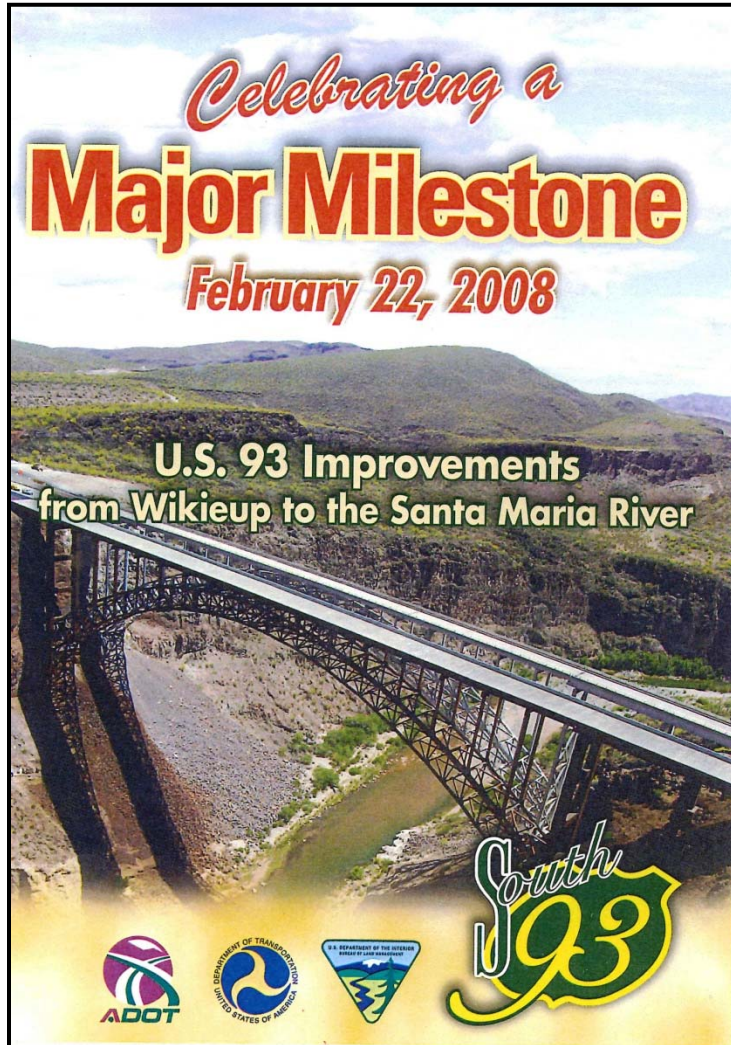
# US 93 Corridor



# US 93 – Wikieup to Santa Maria

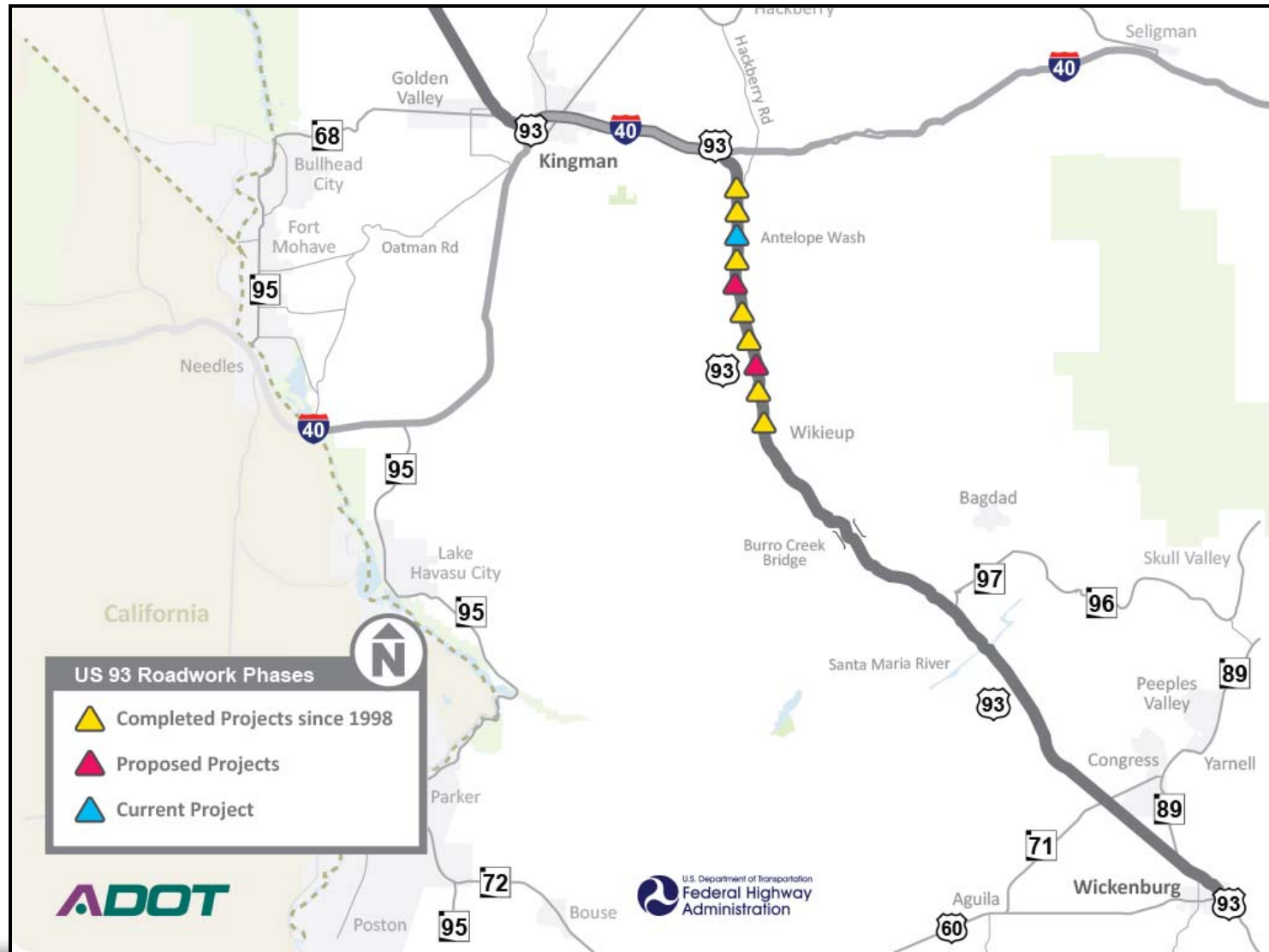


# US 93 – Wikieup to Santa Maria



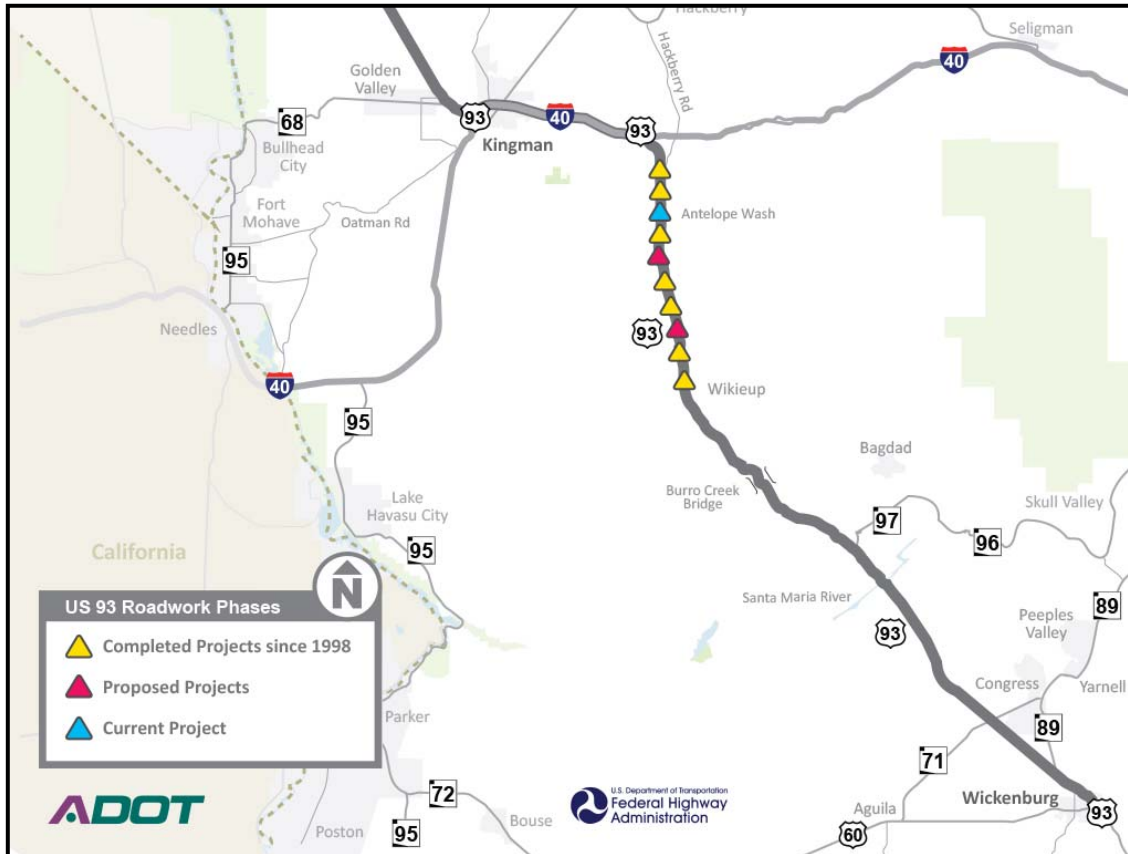
- 9 Projects
- 10 Years
- 1998 – 2008
- 36 Miles
- \$160 M Construction

# US 93 – I-40 to Wikieup



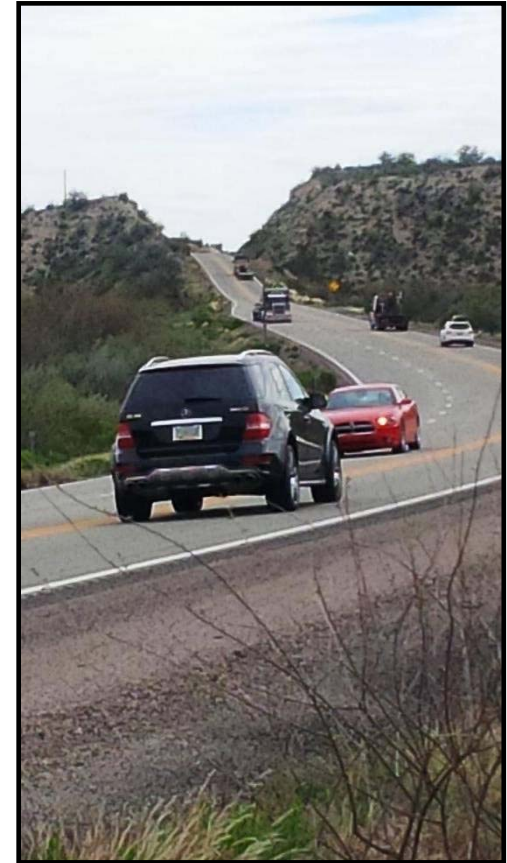


# US 93 – I-40 to Wikieup



- 7 Projects Complete
- 1 In Progress, will complete in June 2015
- 2 Remaining

# US 93 Carrow Stephens



# US 93 Carrow Stephens

---

## Crash History

**MP 116-120**

**February 2008 – February 2015**

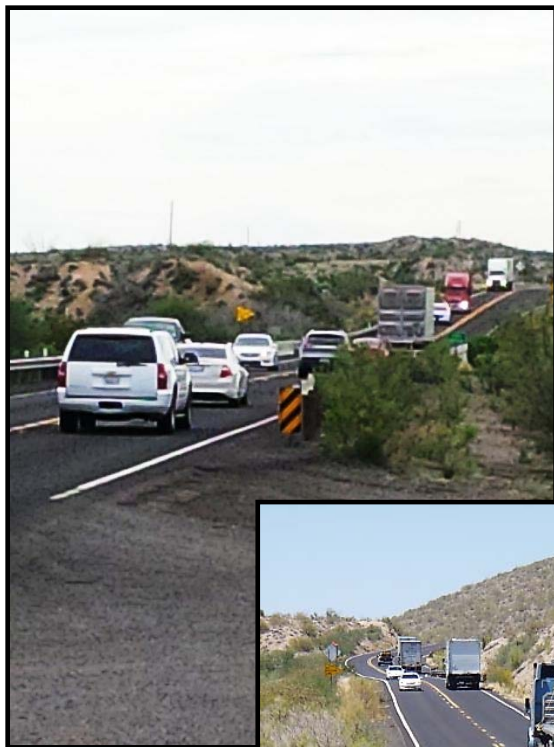
- 51 Total crashes
- 3 Fatalities
- 17 Injuries
- 14 Rollover crashes

## Project Development

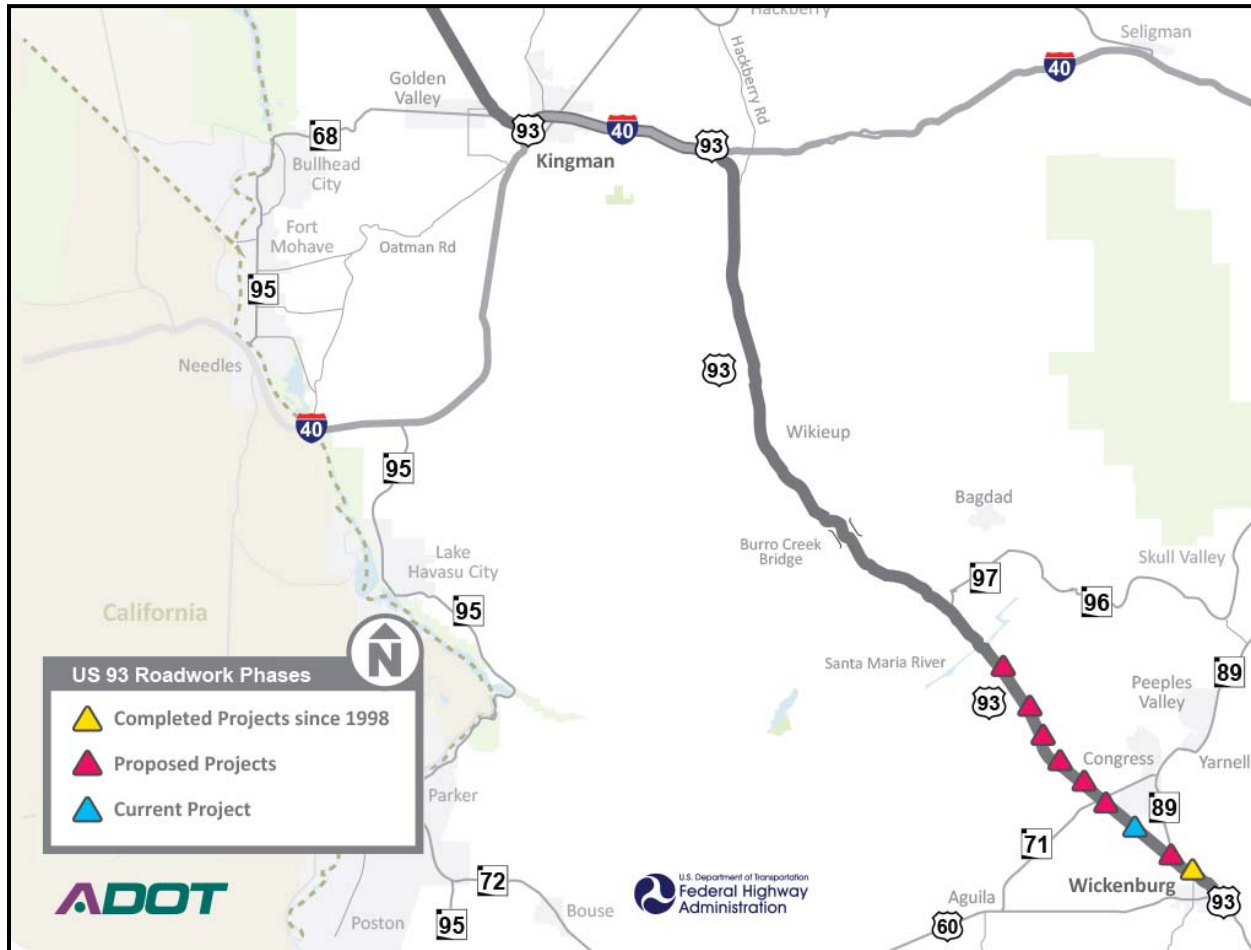
- Currently in design
- Complete in 2 years
- Estimated \$31M construction cost



# US 93 Cane Springs

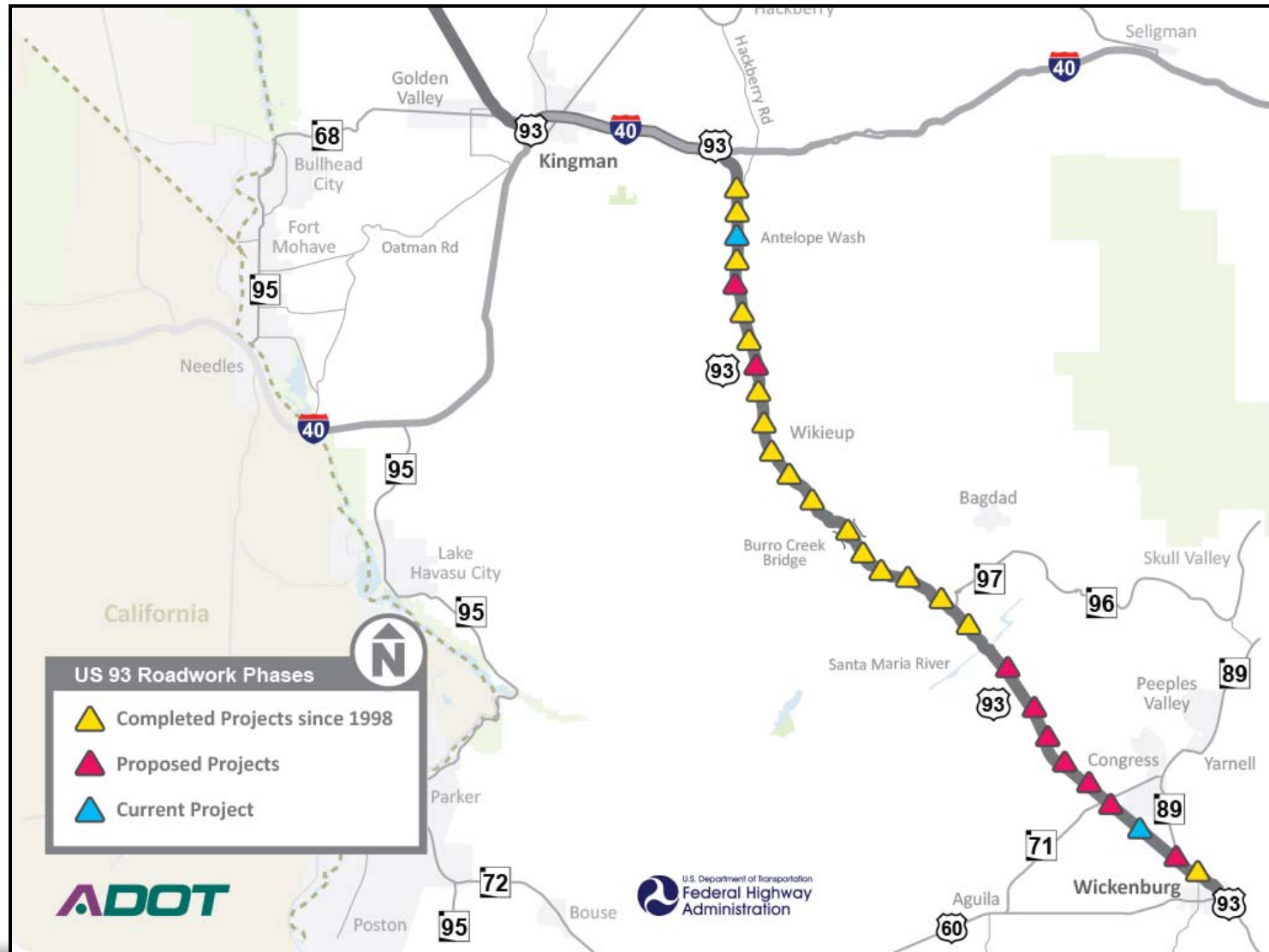


# US 93 – Santa Maria to Wickenburg

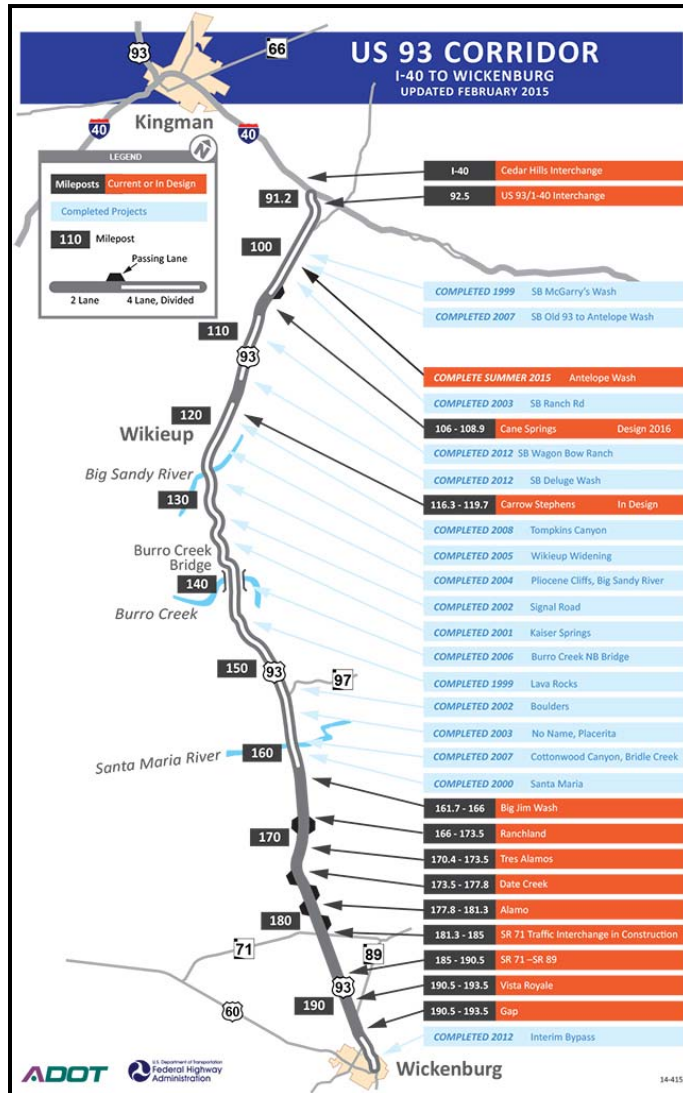


- 1 Project in progress
- 7 Remain

# US 93 – I-40 to Wickenburg



# US 93 Corridor



## I-11

- Additional projects to widen old NB sections
- I-40/US 93 System Interchanges
- Access control plan



# Thank You

---

