



SR101L, SR202L to Shea Blvd.



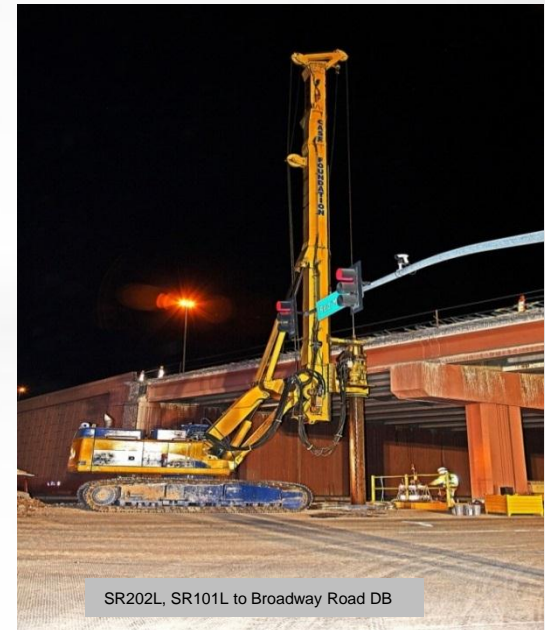
Black Mountain Blvd. GMP1

Phoenix Construction District

April 2015



US60/SR303L TI



SR202L, SR101L to Broadway Road DB

Projects Under Construction

- 25 Projects Under Construction
 - 1 State Funded Project
 - 24 Federally Funded Projects
 - 7 LPA Projects (Local Public Agency)
- Overall Construction Cost - \$ 329 Million

January 2015 Certification

**SR303L, US60 to
Happy Valley Pkwy**

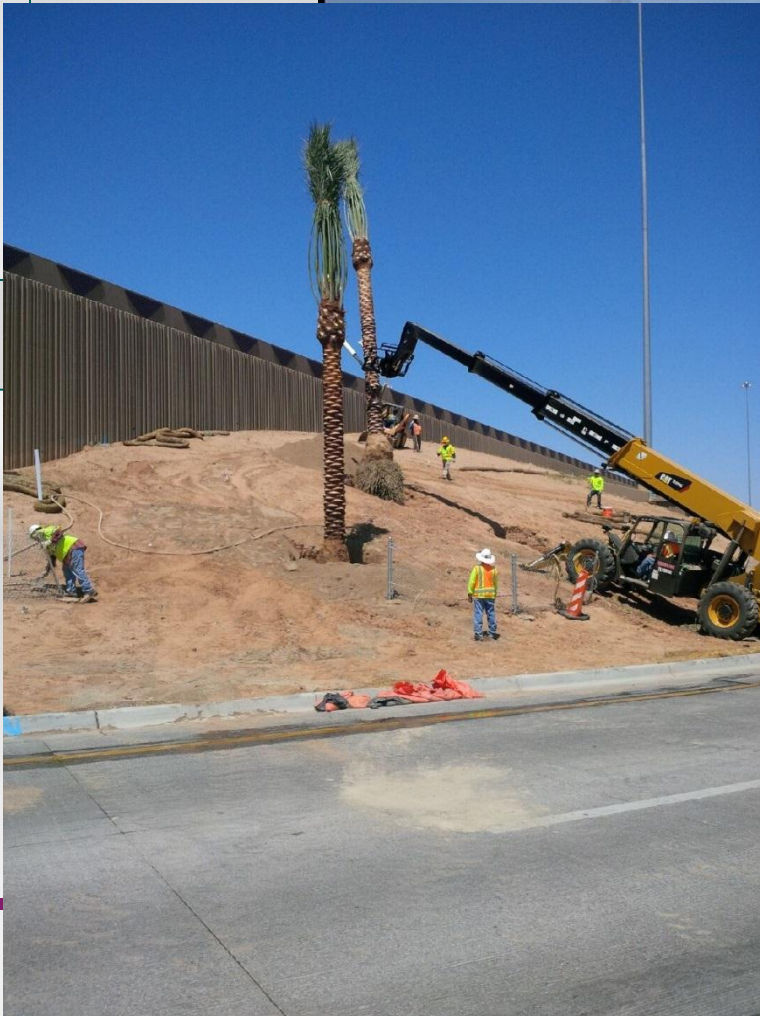
SR303L/El Mirage Road TI

Regional Transportation Plan Freeway Program Phases I - IV, 2006 - 2025

**Black Mountain Blvd,
SR51/SR101L GMP1**

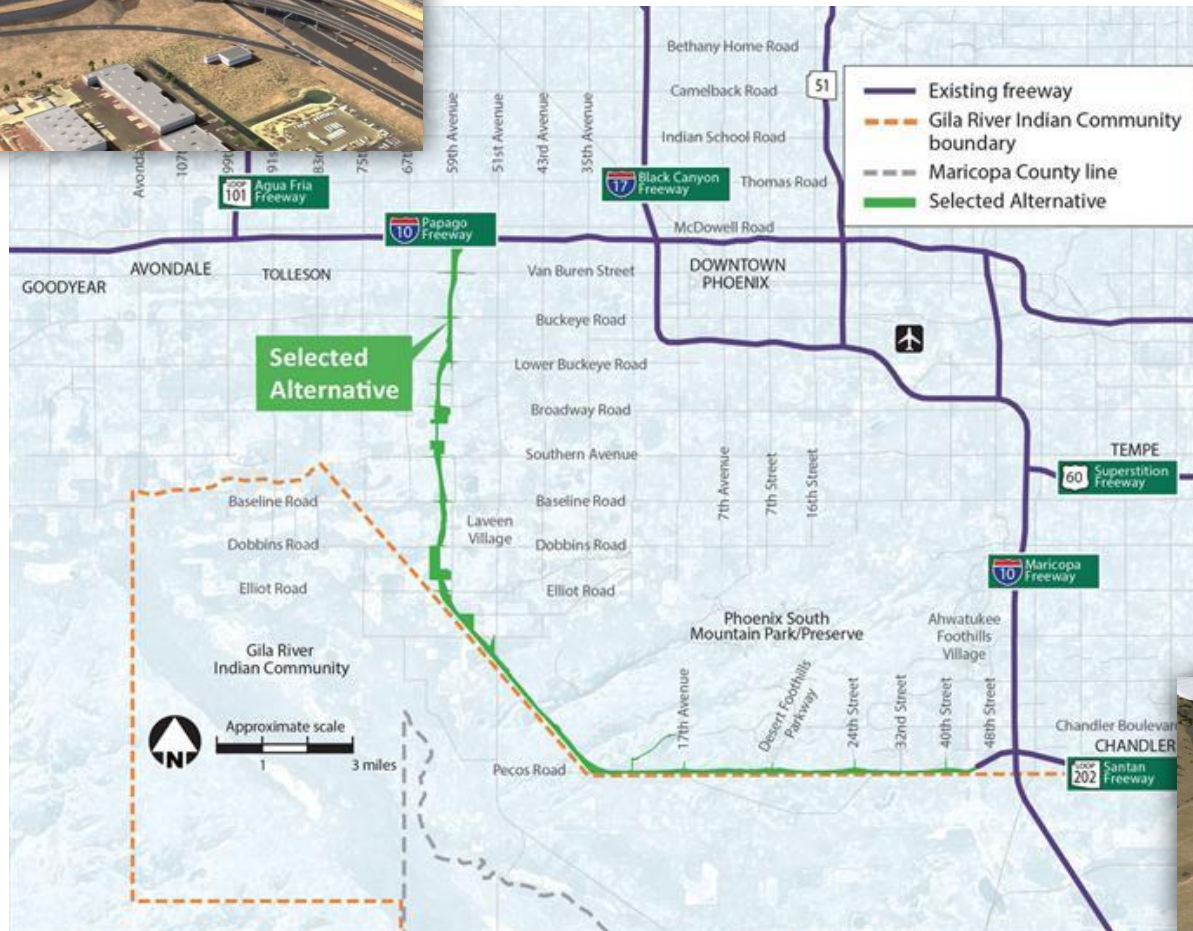
-  New Freeway
-  New HOV and General Purpose Lanes
-  New HOV Lanes
-  New General Purpose Lanes
-  Existing Freeway
-  Grand Avenue Corridor Improvements
-  New Traffic Interchange
-  New HOV Ramp Connection

SR202L, SR101L to



Under Construction

SR202L, South Mountain Freeway



Notice to Proceed:
February 2016

Estimated Construction Budget:
\$1.9B

Shortlisted Teams:

- Connect 202 Partners (Fluor Granite Ames)
- South Mountain Development Group (Kiewit Sundt)
- South Mountain Mobility Group (Dragados Flatiron Pulice)



January 2015 Certification

Regional Transportation Plan Freeway Program Phases I - IV, 2006 - 2025

ADOT

- New Freeway
- New HOV and General Purpose Lanes
- New HOV Lanes
- New General Purpose Lanes
- Existing Freeway
- Grand Avenue Corridor Improvements
- New Traffic Interchange
- New HOV Ramp Connection

**Black Mountain Blvd,
SR51/SR101L GMP2**

US60/Bell Road

**I-10/SR303L TI
Phase 2**

I-10 Deck Park Tunnel

**SR202L, South
Mountain Freeway**

Future Construction Projects

Continued under Environmental Impact Study / Design Concept Report

Pinal County

ADOT

Madhu H. Reddy, P.E.
District Engineer
Phoenix Const. Dist.
Ph: 602-712-8965

