

South Mountain Freeway Project Public Private Partnership

Board Meeting
April 15, 2016

South Mountain Freeway - Loop 202

- ▶ Programmed amount \$1.77 billion
- ▶ Publicly financed
- ▶ 40% federal funding, 60% regional funding
- ▶ Design Build Maintain
- ▶ 18 month procurement
- ▶ 3.5 year construction duration
- ▶ 30 year maintenance duration

Best Value Selection

Proposer	Technical Evaluation Score ¹	D&C Price (YOES) ^{2,3}	30 yr. Factored Annual Maintenance Price (2015\$) ²	Final Score ⁴
Connect 202 Partners	805	\$916,549,178.13	\$131,913,347.60	100
South Mountain Mobility Group	745	\$952,122,496.00	\$199,305,065.95	88.71
South Mountain Development Group	797	\$1,105,202,746.96	\$172,404,150.47	86.62

Notes:

1 Technical Evaluation Score is out of a maximum of 1000 points

2 Values for Connect 202 Partners are based on negotiations – 5 Alternative Design Concepts Added

3 YOES = Year of Expenditure Dollars

4 Combination of Technical Score and Price Score. Maximum of 100 points

Project Organizational Structure



Developer



Fluor/Granite/Ames

Public Relations
Gunn Communications

Independent Quality Firm
Raba Kistner

Lead Engineering Firm
Parsons Brinkerhoff

Lead Maintenance Firm
202 Maintenance Services LLC

ADOT Organizational Structure



Robert Samour
Project Director


Julie Gadsby
Construction Manager

Carmelo Acevedo
Project Manager

Steve Mishler
Design Manager

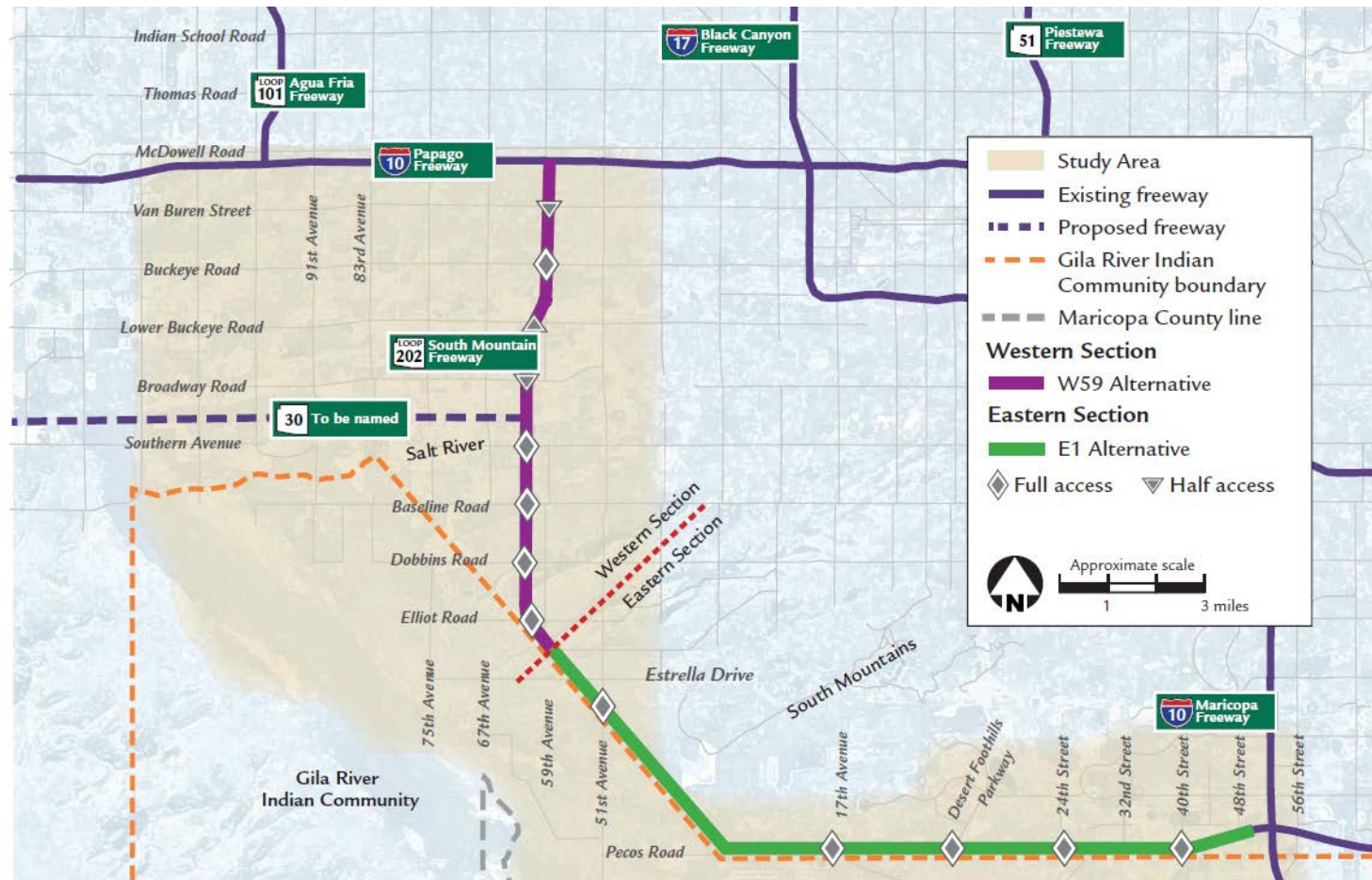
Amy Ritz
Deputy Project Manager

Alex Arriaga
Deputy Design Manager

ADOT Central District – ADOT Technical Groups
 - General Engineering Consultant

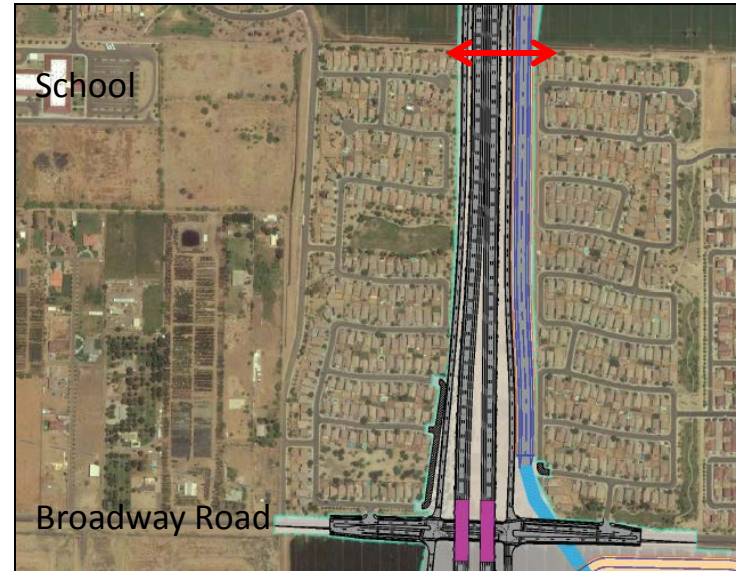
Basic Configuration

- ▶ 22 miles
- ▶ 13 service traffic interchanges
- ▶ System traffic interchange at I-10 (Papago)
- ▶ 40 bridges

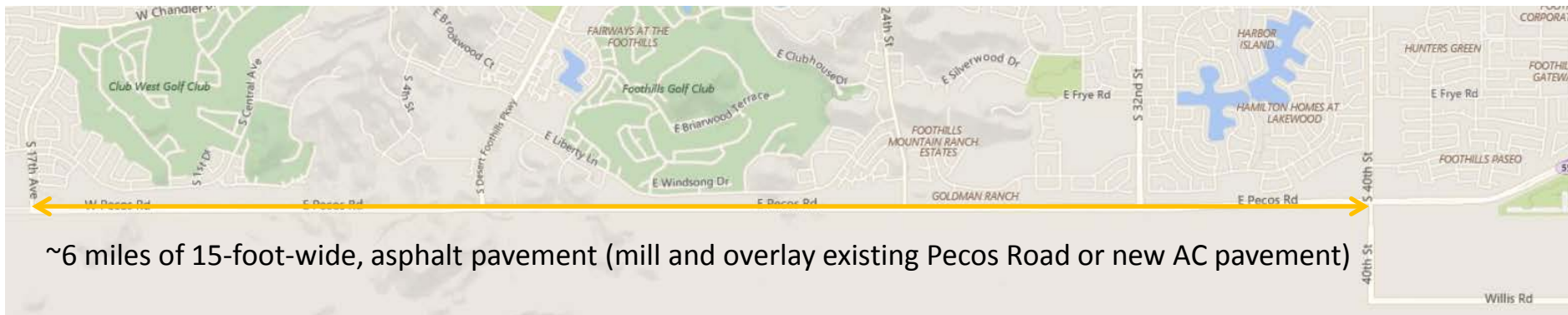


Additional Features

- ▶ Pedestrian bridge at Elwood Street alignment (north of Broadway Road)



- ▶ Shared-use path south of freeway along Pecos Road from 40th Street to 17th Avenue



~6 miles of 15-foot-wide, asphalt pavement (mill and overlay existing Pecos Road or new AC pavement)

Developer Design Features

- ▶ Asphalt concrete mainline pavement with AR-ACFC overlay. Crossroads will be PCCP.
- ▶ Use of bulb-tee bridge girders and pre-cast elements
- ▶ Optimization of ramp configuration at I-10 (Papago)
- ▶ Shifting 51st Avenue TI to Estrella Drive

ADOT Construction Oversight Role

ADOT will provide oversight as identified in the Contract Documents, including the following:

- ▶ Monitoring and auditing Developer, Developer-Related Entities and their Books and Records;
- ▶ Conducting periodic reviews of Project documentation and files;
- ▶ Conducting material tests, according to ADOT's test methods, to verify (a) Developer's compliance with all testing frequencies and requirements, including performance and acceptance testing, set forth in the Contract Documents
- ▶ Accompanying Developer on its Inspections;

ADOT Construction Oversight Role Cont.

- ▶ Accompanying Developer on its Inspections;
- ▶ Conducting ADOT's own inspections, assessing Developer's records of Inspections, Maintenance Services and Project conditions, and assessing the condition of Elements;
- ▶ Attending and witnessing tests and verifications by Developer conducted pursuant to the Technical Provisions or Project Management Plan.
- ▶ Reviewing Developer's certification of Record Drawings and surveys and As-Built Schedule;

NTP 1 – March 1, 2016 Authorizes the Developer to submit the following Plans and start Design, all of which are precedent to issuing NTP2 which allows construction to begin.

- ▶ Project Management Plan
- ▶ Environmental Management Plan
- ▶ Public Involvement Plan
- ▶ Safety Management Plan
- ▶ Transportation Management Plan
- ▶ Quality Management Plan
 - Professional Services Quality
 - Construction Quality
- ▶ Existing Site Documentation
- ▶ Collocated Office Plan
- ▶ Project Baseline Schedule
- ▶ Segments Limits Map
- ▶ Submittal Schedule
- ▶ ROW Activity Plan
- ▶ DBE Utilization Plan
- ▶ OJT Utilization

QUESTIONS?