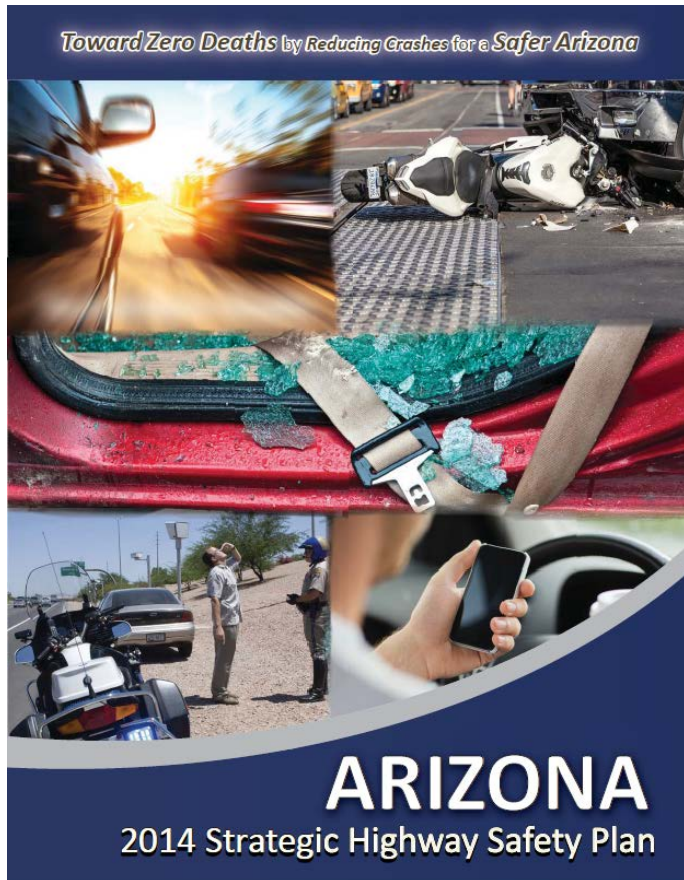


# 2014 Strategic Highway Safety Plan (SHSP)

## A Brief Overview



Transportation Board Meeting  
April 15, 2016

# Background

- Arizona 2007 SHSP was Arizona's first and under Federal SAFETEA-LU legislation
- Newer legislation MAP-21 (Moving Ahead for Progress in the 21<sup>st</sup> Century Act) continues requirement that every State develop a safety plan
- Arizona 2014 SHSP was published in October 2014 ([www.azdot.gov/shsp](http://www.azdot.gov/shsp))
- SHSP Executive Committee members represent four state agencies and three federal agencies



U.S. Department of Transportation  
Federal Highway  
Administration

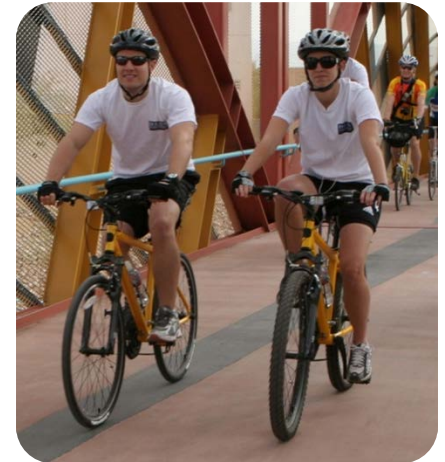


# Why have an SHSP?

- All states are **required** to have an approved SHSP to improve transportation safety
  - Legislated by Congress in 2005
  - Now required under MAP-21
  - Drives investment decisions (HSIP)



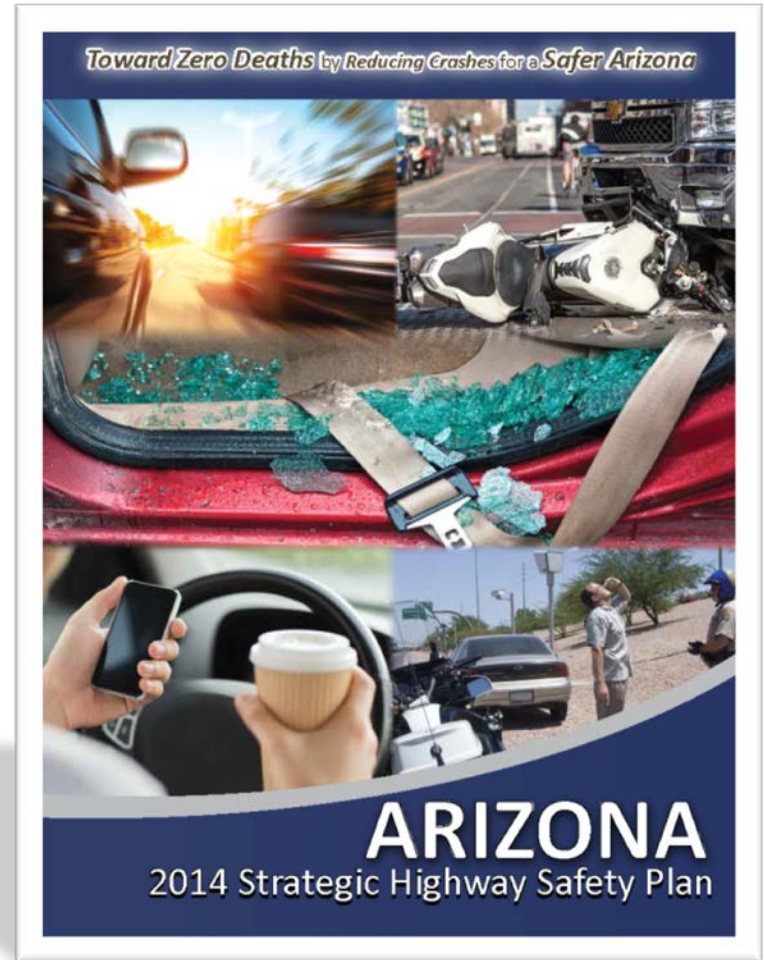
The most important reason:  
**reduce fatalities** and **serious injuries**  
on all public roads



Our Vision:  
**Toward Zero Deaths by Reducing Crashes for a Safer Arizona**

# Required Elements

- ▶ MAP-21 Compliant
- ▶ Data Driven
- ▶ All Public Roads
- ▶ Collaborative Process
- ▶ Multidisciplinary
- ▶ A Program of Strategies
- ▶ Coordinated
- ▶ Goal, Objective, and Performance Measures

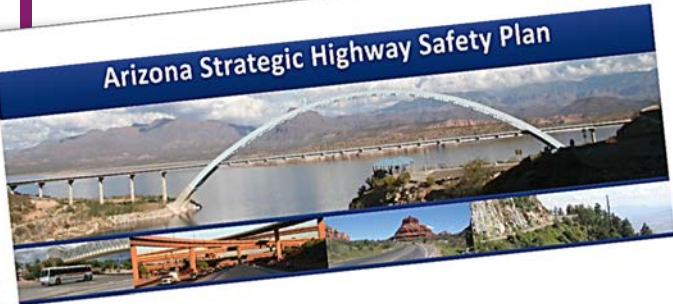


# Holistic Approach



# Data Driven

## Arizona Strategic Highway Safety Plan



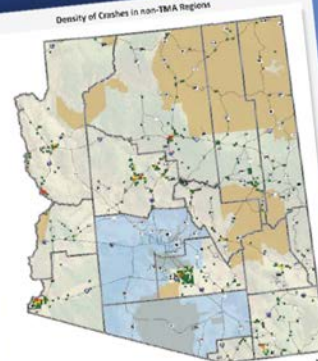
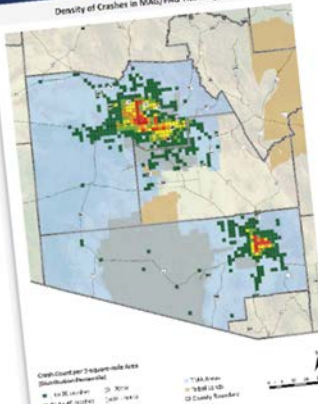
## Crash Characteristic Data Map Book

WILSON  
& COMPANY

### Arizona Strategic Highway Safety Plan Total Crash Count Summary | 2005-2012

		Total Fatal		Total Incapacitating Injury		Total	
		Count	% of Total	Count	% of Total	Count	% of Total
<b>Total</b>		6,875	100.0%	33,551	100.0%	40,422	100.0%
<b>Characteristics</b>							
Urban		1,768	25.7%	10,227	30.5%	12,000	29.7%
Rural		1,555	22.6%	7,830	23.3%	9,385	23.2%
Highway		2,670	38.9%	12,515	37.3%	15,185	37.5%
Other Road		882	12.8%	3,000	8.9%	3,882	9.6%
<b>Total Land</b>		6,875	100.0%	33,551	100.0%	40,422	100.0%
<b>Intersection Related</b>							
Lane Departure		1,555	22.6%	7,830	23.3%	9,385	23.2%
Work Zone		15	0.2%	17,012	50.7%	17,027	42.1%
<b>Driver Type</b>							
Young Driver (13-24)		2,041	29.7%	9,372	28.0%	11,413	28.2%
65 and Older		1,555	22.6%	7,830	23.3%	9,385	23.2%
<b>Vehicle Type</b>							
Involvement Involved		1,176	17.1%	5,700	17.0%	6,876	17.0%
Pedestrian Involved		201	2.9%	1,506	4.5%	1,707	4.2%
<b>Behavior</b>							
Aggressive Driver		2,260	32.9%	9,380	28.0%	11,640	28.8%
Alcohol Involved		981	14.3%	724	2.1%	1,705	4.2%
Distracted Driver		1,342	19.5%	7,830	23.3%	9,172	22.7%
<b>Impaired</b>							
Drug Involved		1,342	19.5%	7,830	23.3%	9,172	22.7%
Impaired Driver		1,342	19.5%	7,830	23.3%	9,172	22.7%
<b>Unrelated</b>							
Unrelated Motorcyclist		1,342	19.5%	7,830	23.3%	9,172	22.7%
No Restraint Used		1,342	19.5%	7,830	23.3%	9,172	22.7%
<b>Speeding</b>							
Speeding Involved		1,342	19.5%	7,830	23.3%	9,172	22.7%
<b>Vehicle</b>							
Motorcycle Involved		1,342	19.5%	7,830	23.3%	9,172	22.7%
Train Involved		15	0.2%	17,012	50.7%	17,027	42.1%
<b>Other</b>							
Multiple Vehicle		15	0.2%	17,012	50.7%	17,027	42.1%
<b>Weather</b>							
Dark Related (Wet)		23	0.3%	155	0.5%	178	0.4%
Wet Weather/Related		23	0.3%	155	0.5%	178	0.4%
<b>Other</b>							
Dark - No Light		23	0.3%	155	0.5%	178	0.4%

### Arizona Strategic Highway Safety Plan Intersection Related Crash Distribution | 2005-2012



Total Intersection Related Serious Crashes By Year 2005-2012		
Year	Total	Incapacitating Injury
2005	2,401	2,401
2006	2,227	2,227
2007	2,015	2,015
2008	1,759	1,759
2009	1,617	1,617
2010	1,589	1,589
2011	1,507	1,507
2012	1,407	1,407
<b>Total</b>	<b>14,067</b>	<b>14,067</b>

Total Crashes in Arizona By Year 2005-2012		
Year	Total	Incapacitating Injury
2005	3,088	3,232
2006	3,136	3,136
2007	3,012	3,012
2008	2,759	2,759
2009	2,617	2,617
2010	2,589	2,589
2011	2,507	2,507
2012	2,407	2,407
<b>Total</b>	<b>23,151</b>	<b>23,151</b>



# Goal and Objective



# Emphasis Areas

## 2014 SHSP EMPHASIS AREAS

### TOP FOCUS EMPHASIS AREAS

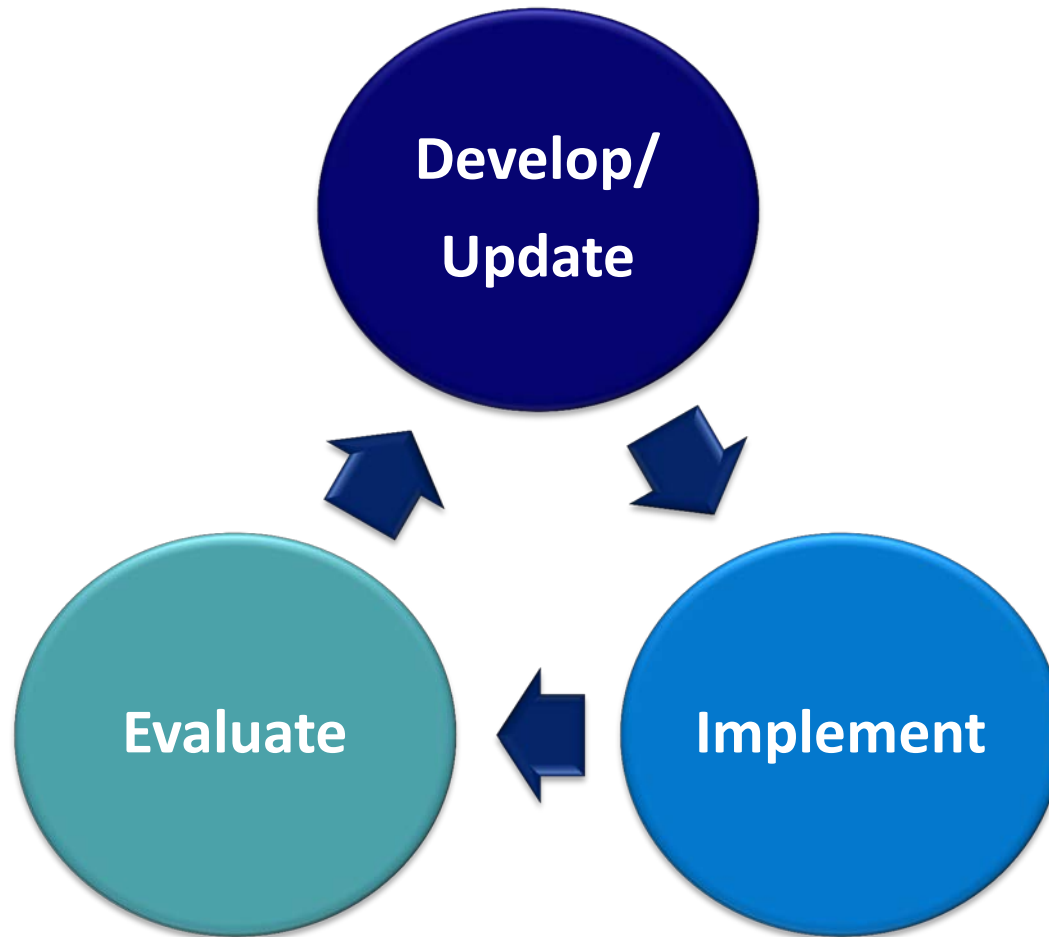
SPEEDING AND AGGRESSIVE DRIVING  
IMPAIRED DRIVING  
OCCUPANT PROTECTION  
MOTORCYCLES  
DISTRACTED DRIVING

ROADWAY INFRASTRUCTURE AND OPERATIONS  
AGE RELATED  
HEAVY VEHICLES / BUSES / TRANSIT  
NONMOTORIZED USERS  
NATURAL RISKS  
TRAFFIC INCIDENT MANAGEMENT  
INTERJURISDICTIONAL

### CRASH CHARACTERISTICS

Geographic Area of Crash  
Geometric Type of Crash  
Person Type Involved in Crash  
Behavioral Characteristics  
Associated with Crash  
Vehicle Type Involved in Crash  
Environmental Conditions  
During Crash

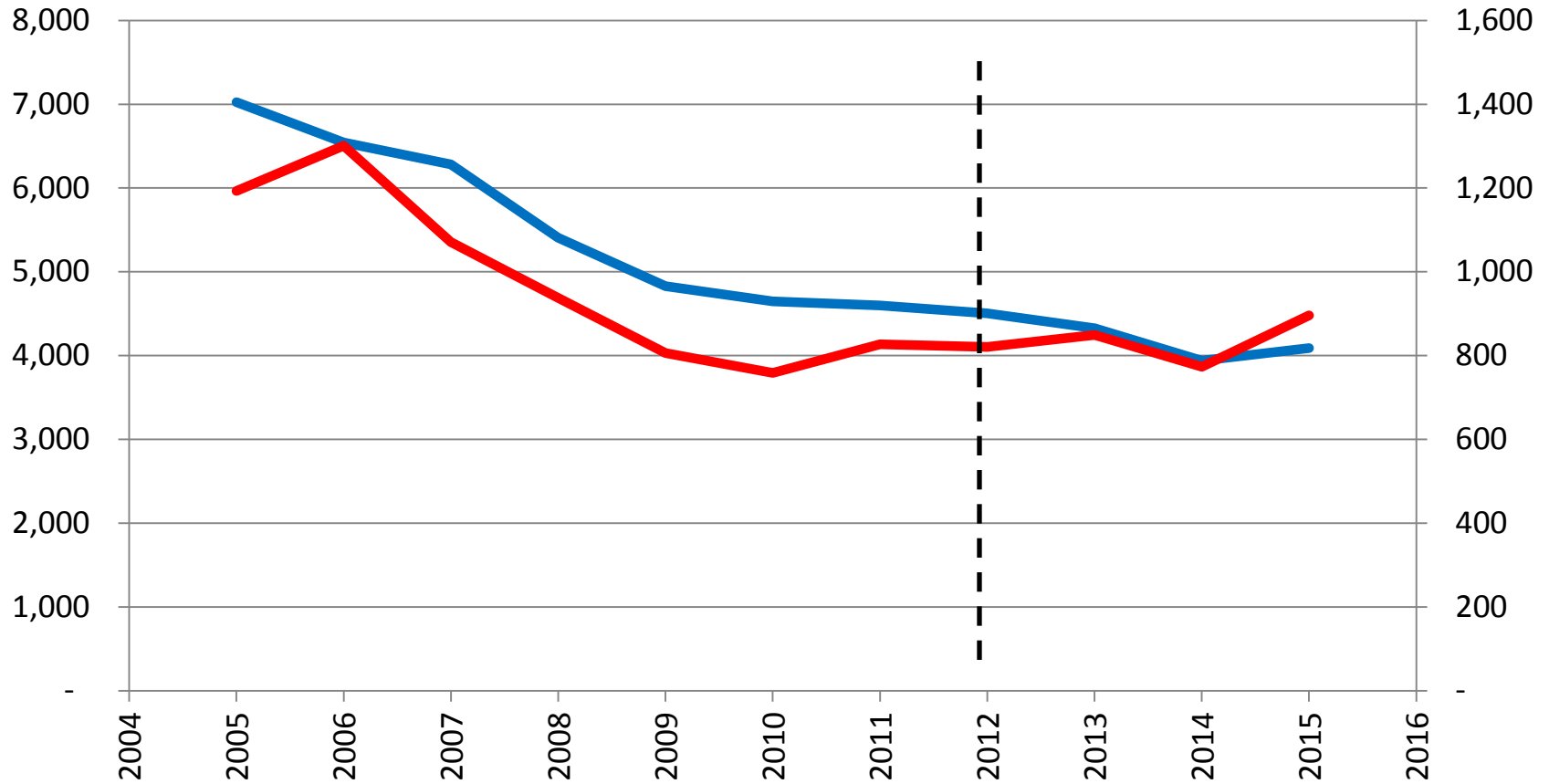
# Implementation Cycle



# Historic Trend

Serious Injuries

Fatalities



# Questions?

2014 SHSP is available online

[www.azdot.gov/shsp](http://www.azdot.gov/shsp)

# Thank you!