

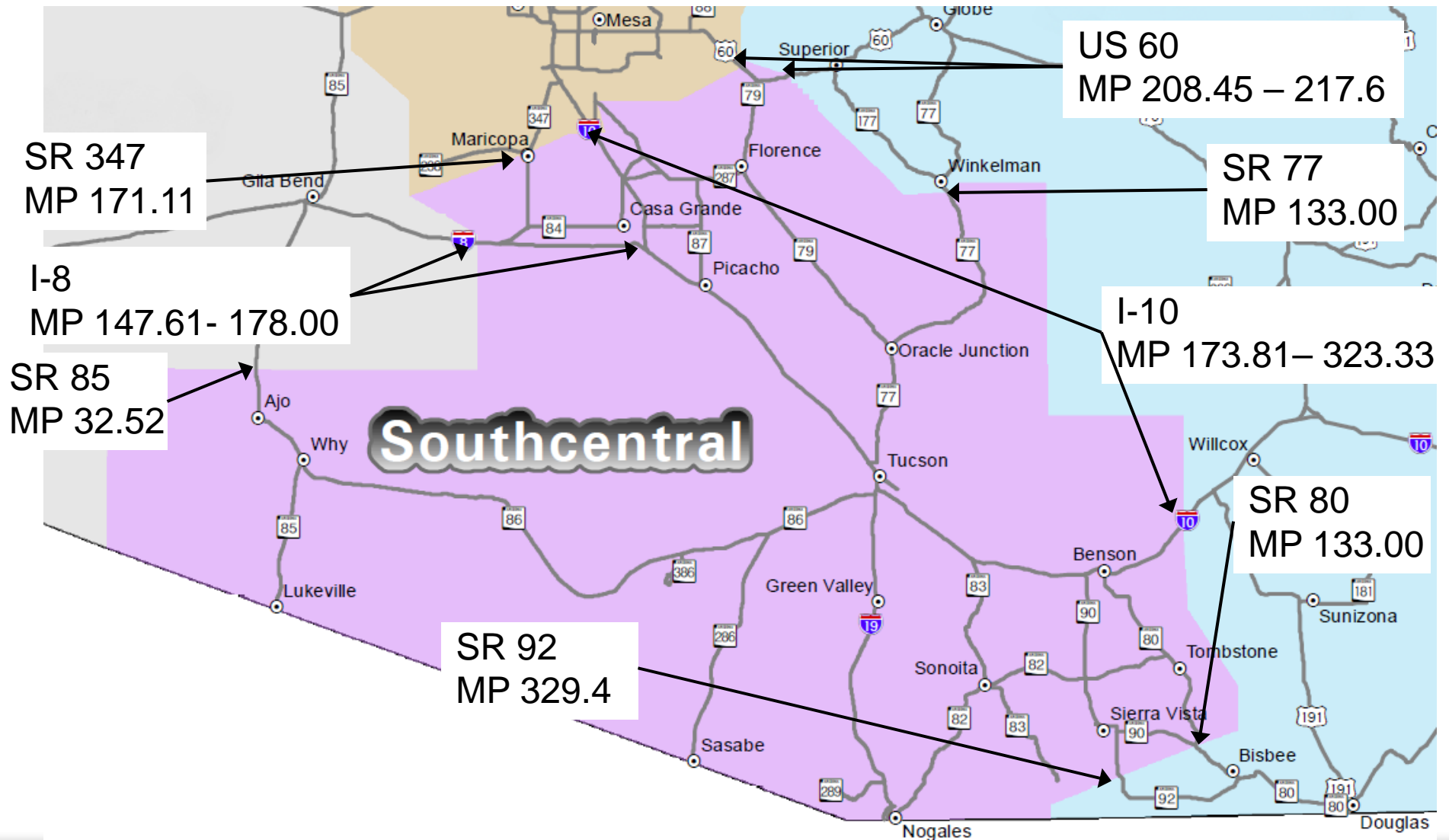
TOP OF THE MORNING TO YOU! FROM THE SOUTH CENTRAL DISTRICT

Transportation Board Presentation



Presentation by Rod Lane, P.E.
South Central District Engineer
March 17, 2017

Age Group	Percentage
18-24	35%
25-34	25%
35-44	15%
45-54	10%
55-64	5%
65-74	3%
75-84	2%
85+	1%



Ina Road Traffic Interchange



- **Construction Manager at Risk (CMAR)**
- **Designer: Psomas**
- **Contractor: Sundt/Kiewit Joint Venture**
- **Contract Amount: \$124M (about 24% local and RTA funds, 64% ADOT)**

Ina Road Traffic Interchange



- **Scope:** construct bridge over I-10 (Ina Road), construct bridge over UPRR (Ina Road), construct two bridges over Santa Cruz River (Ina Road), reconstruct I-10, drainage improvements, CIP retaining walls, MSE retaining walls, utility relocations, grading, paving, traffic signals, signing, lighting, pavement markings
- **Estimated Completion:** Jan. 2019

I-19/Ajo Traffic Interchange (Phase I)



- **Contractor:** Ames Construction Inc.
- **Contract Amount:** \$39M (about 50% local, 50% ADOT)
- **Scope:** reconstruct the I19/Ajo TI (SPUI), roadway excavation, construct embankment, grading, paving, CIP retaining walls, sound walls, drainage improvements, pavement markings, signing, lighting, traffic signals, etc.
- **Estimated Completion:** Feb. 2018

Ajo TI – Final Product



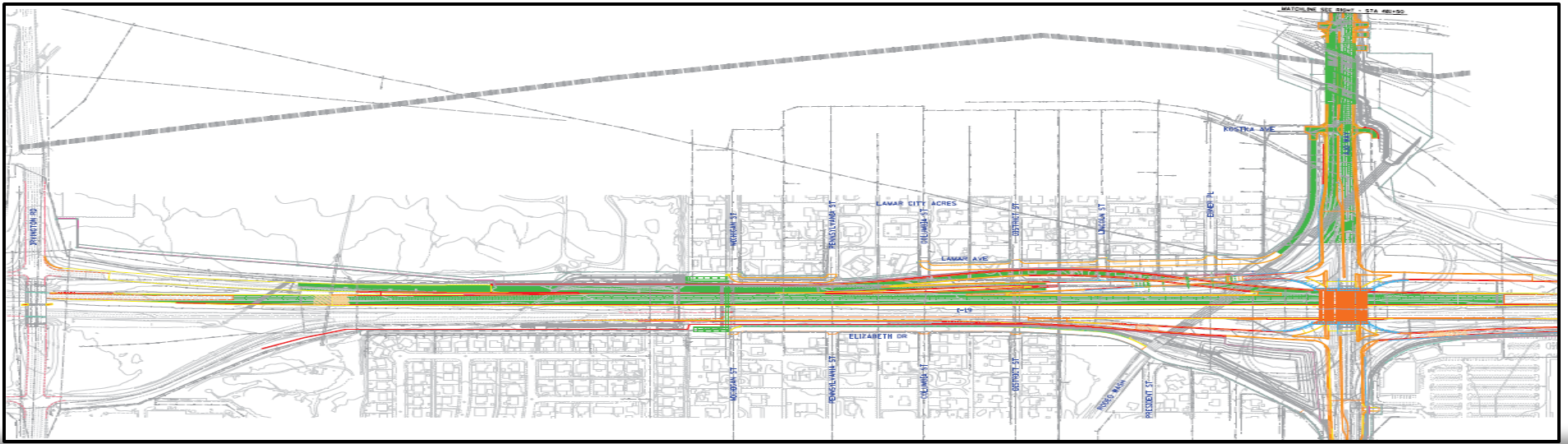
Age Group	Percentage
18-24	35%
25-34	25%
35-44	15%
45-54	10%
55-64	8%
65-74	5%
75-84	3%
85+	1%

Overview

- ❑ Design Lead - Stanley Consultants
- ❑ Construction Fall 2017

Roadway Improvements

- ☐ Widen I-19, Irvington to Ajo
- ☐ AR-ACFC
- ☐ Construct braided Irvington SB off ram
- ☐ Reconstruct Santa Cruz River Bridge
- ☐ Pedestrian Bridge across I-19
- ☐ Sound walls along I-19
- ☐ Drainage improvements
- ☐ Signing, Striping, and Lighting



SR 86 - Valencia to Kinney



- **Contractor:** The Ashton Company, Inc.
- **Contract Amount:** \$40M (About 20% local, 80% ADOT)
- **Scope:** widen SR86 – four travel lanes from Kinney to Sheridan, six travel lanes from Sheridan to Valencia, local street improvements, grading, paving, drainage improvements, construct two bridges, guardrail, pavement markings, traffic signals, signing, and utility relocations
- **Estimated Completion:** July 2018

Craycroft and I-10



- **Contractor: Granite Construction**
- **Contract Amount: \$3.3M (100% ADOT)**
- **Scope: Bridge deck replacement, temporary bridge deck erection and removal, median detour construction and removal, and miscellaneous work**
- **Estimated Completion: Sep. 2017**

Craycroft and I-10



- **Temporary Bridge Facts**
 - ACRO Bridge – manufacturer/supplier
 - Span 200 feet, pick weight 185 T – 277 T with deck
 - \$400K
 - Rental – not a purchase
 - Upcoming Wilmot TIOP Project – same concept

Current Construction

Project Name	Location Route and Mile Post	Board District	Contract Time			Project Dollars			Up-Coming Activities (paving, bridge forming, sign installation, other)	Estimated Completion
			Contract Time	Time Used	% Complete	Contract \$	\$ Spent	% Spent		
Ina Rd T.I.	I10	2	885	46	5.20%	\$108M	\$3.8M	3.52%	RCBC Construction, Storm Drain Construction	Summer 19
Valencia to Kinney	SR86	2	700	376	53.71%	\$41.1M	\$17M	41.47%	Work contin on structures, sewer line, retaining walls, channel lining, roadway ex, signal work	Winter 18
I-19, Ajo Way TI	I19	2	700	389	55.57%	\$40M	\$20.4M	50.47%	SPUI bridge deck, ramp A deck, retaining walls, sound walls, RCBC construction	Winter 18
Pima Mine Rd	I19	2	385	0	0.00%	\$4.75M	\$0.00	0.00%	Partnering/Precon - March 16, 2018	4/11/2018
SR 86 Fuller to Valencia	SR86	2	180	45	25.00%	\$4.25M	\$364K	8.54%	Guardrail removal/reconstruct, Milling and paving to begin end of March	Summer 17
Craycroft	0	2	350	162	46.29%	\$3.5M	\$816K	23.39%	Placing AB & 409 for temp. detour, approach slabs, bridge decking	Fall 17
SR 82 PP	0	3	170	80	47.06%	\$2.35M	\$1,85M	78.50%	Seeding establishment to be completed then Project to go on winter shut down until 5/15	Summer 17
SR 287 I-10 to La Palma Rd	0	4	90	48	53.33%	\$2.2M	\$758K	34.27%	Work to resume March 15th	Spring 17
Tohono Safety	IRR	2	120	54	45.00%	\$1.7M	\$535K	31.17%	Sign Installation, Striping, Fog coat	Spring 17
Kino Road TI	0	2	100	107	107.00%	\$1.4	\$1,35M	95.03%	Unit working on finals and closing out project	Substantially complete
Santa Cruz River Brg	I19	2	220	227	103.18%	\$1.07	\$801K	75.12%	Smoothness issues to be addressed by contractor	Substantially complete
Coolidge Central Ave.	0	4	150	147	98.00%	\$1.5M	\$884K	59.64%	Unit working on finals and closing out project	Substantially complete
SR 79 Culvert Extensions	0	4	140	0	0.00%	\$1.3	\$0.00	0.00%	Partnering/Precon - March 28, 2018	Fall 2017
Tree Thinning	I19	2 & 3	108	101	93.52%	\$904K	\$560K	61.86%	Starting work between MP 35 to 43	2 weeks
SR 87 Gila River Bridge Scour	SR87	4	225	0	0.00%	\$402K	\$0	0.00%	Partnering/Precon - March 21, 2017	Late fall 17
Eloy-Update Regulatory Signs	0	4	40	13	32.50%	\$57.3K	\$1.7K	2.93%	Sign Installation	Spring 17
I-10 Adams Peak Scour	I10	3	135	17	12.59%	\$200K	\$7.9K	3.92%	Project Start Date 2/22/2017, footing excavation	Summer 17

Questions?

Thank You

rlane@azdot.gov