A photograph of a multi-lane highway with several lanes closed for a festival. The closed lanes are lined with orange and white striped traffic barrels. A red car is stopped in the left lane, and a white pickup truck is in the middle lane. The sky is overcast. A blue decorative wave graphic is at the top of the image.

2018 Renaissance Festival

Randy Everett
District Administrator - ADOT

Background Info

- Event is held yearly for 8 weekends starting on the President Day weekend
 - Open Saturdays, Sundays & Presidents' Day beginning Feb. 10th
 - Last day Sunday April 1st, 2018
 - Hours of Operation: 10:00 am to 6:00 pm
 - Parking lot opens at 9:15 am



Background Info (cont.)

- Location:
 - US 60: 1 mile (5000') east of the US 60 and Peralta Road inters.
 - South side of US 60
- Access to and from US 60 is via two driveways:
 - West Driveway – Known as Driveway A
 - East Driveway – Known as Driveway B

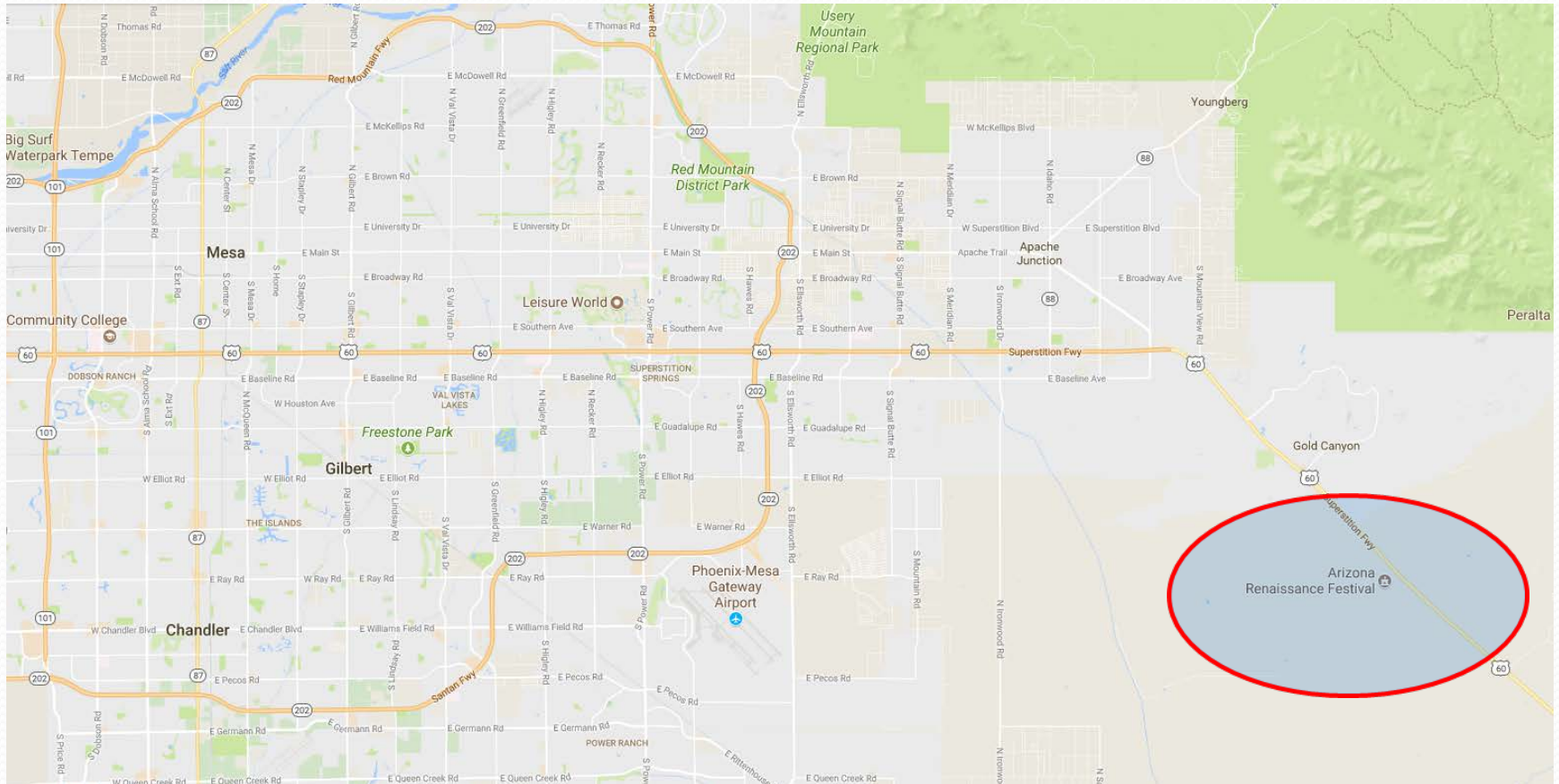


Coordination

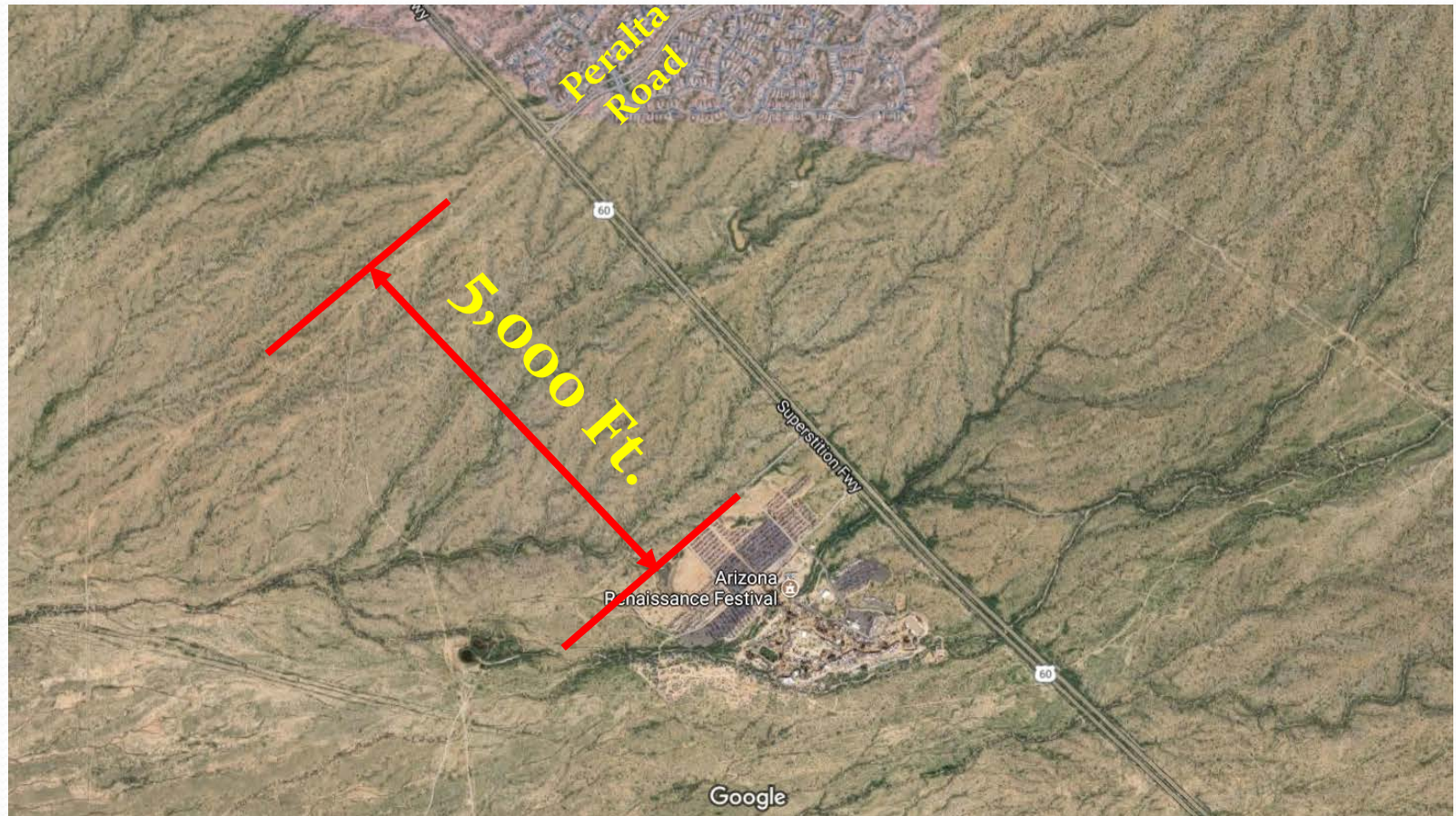
- ADOT has been working closely with the following groups to ensure that impacts to the state system are minimized:
 - Renaissance Festival Organizers
 - Department of Public Safety (DPS)
- Upcoming presentations with
 - Central Arizona Governments (CAG)
 - Transportation Board
 - Other



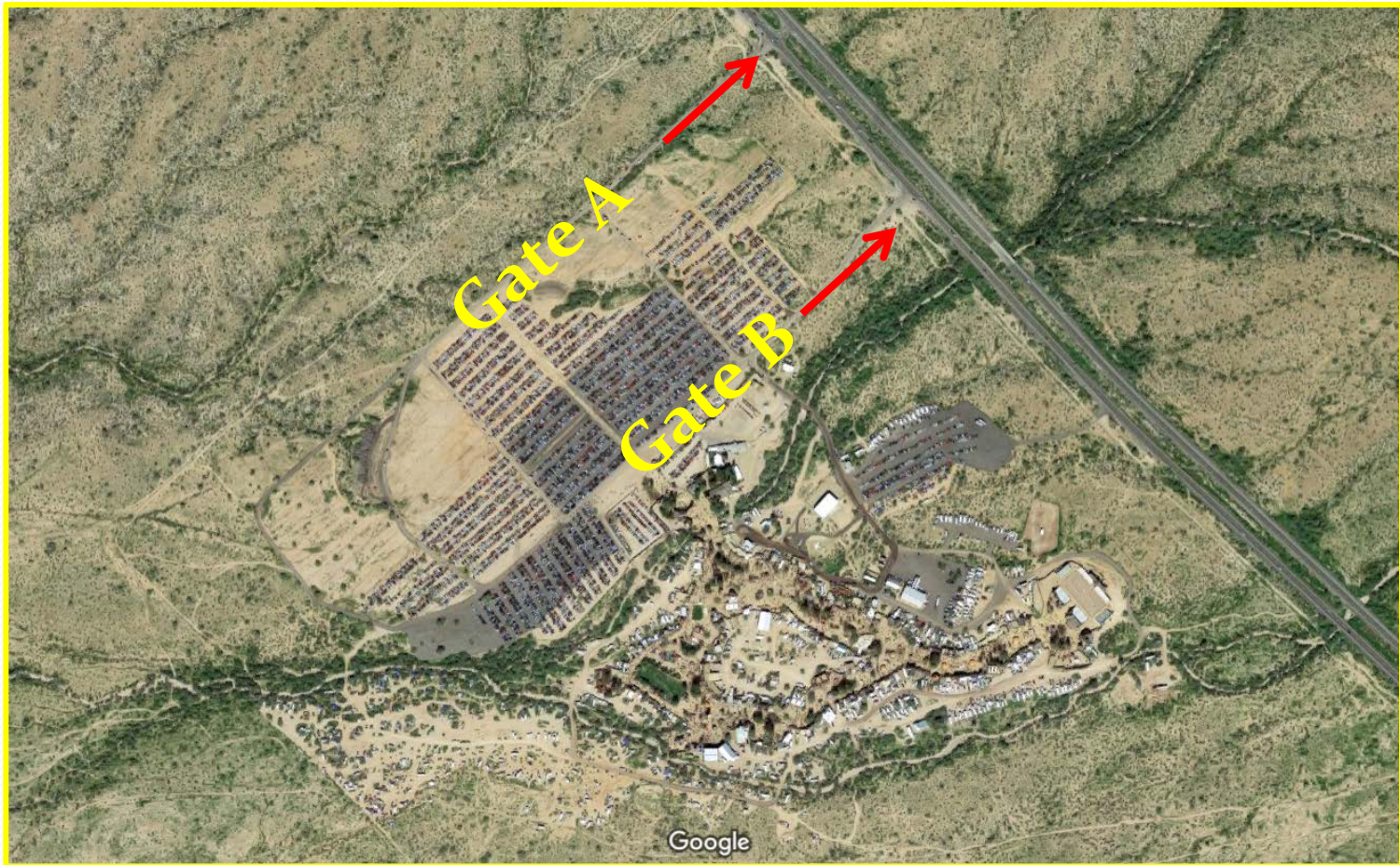
Location



Location(cont.)



Location (cont.)





Congestion

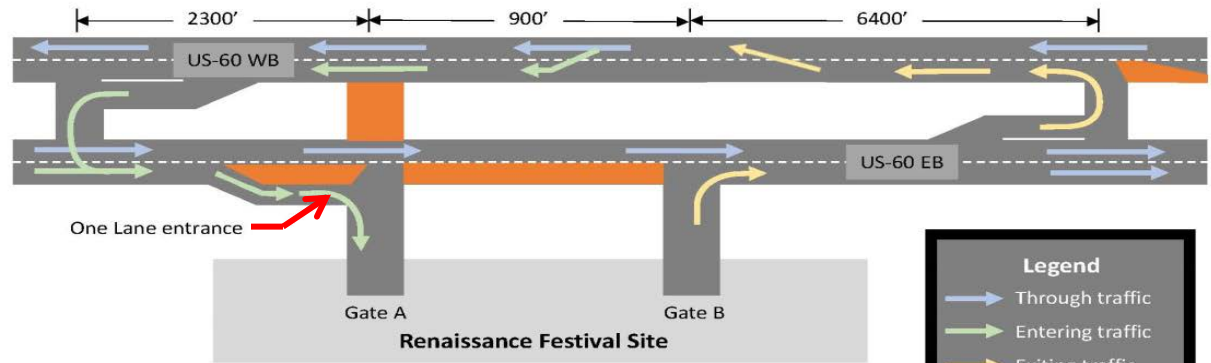
- ADOT is aware of congestion along the corridor and has taken proactive steps to address the congestion issue and try to mitigate the impacts of the event onto the state system
- Steps taken include, but not limited to:
 - April 11, 2017 - Post 2017 Renaissance Festival meeting to discuss what worked and what needed to improve
 - August 21, 2017 – Conference call to discuss status of traffic study
 - October 12, 2017 – Meeting to go over the traffic study recommendations



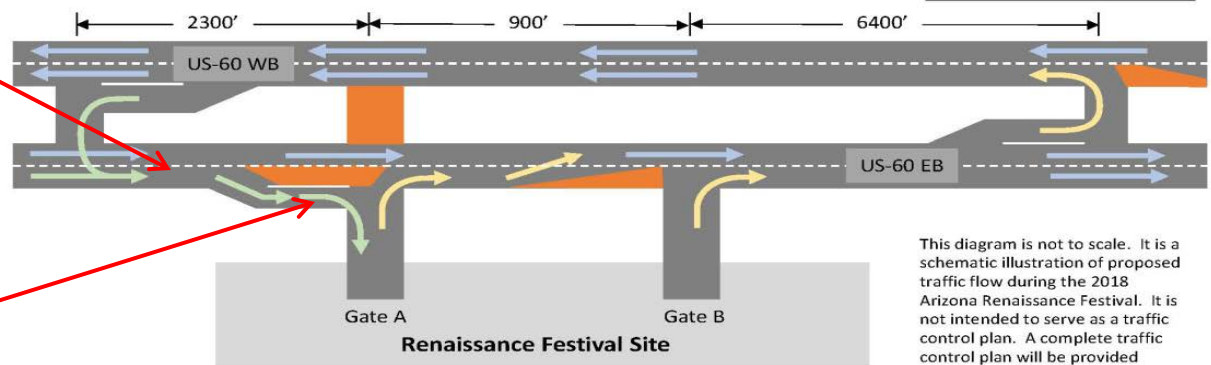
2017 Plan



Phase 1: 9:15 a.m. to 3:00 p.m.



Phase 2: 3:00 p.m. to close

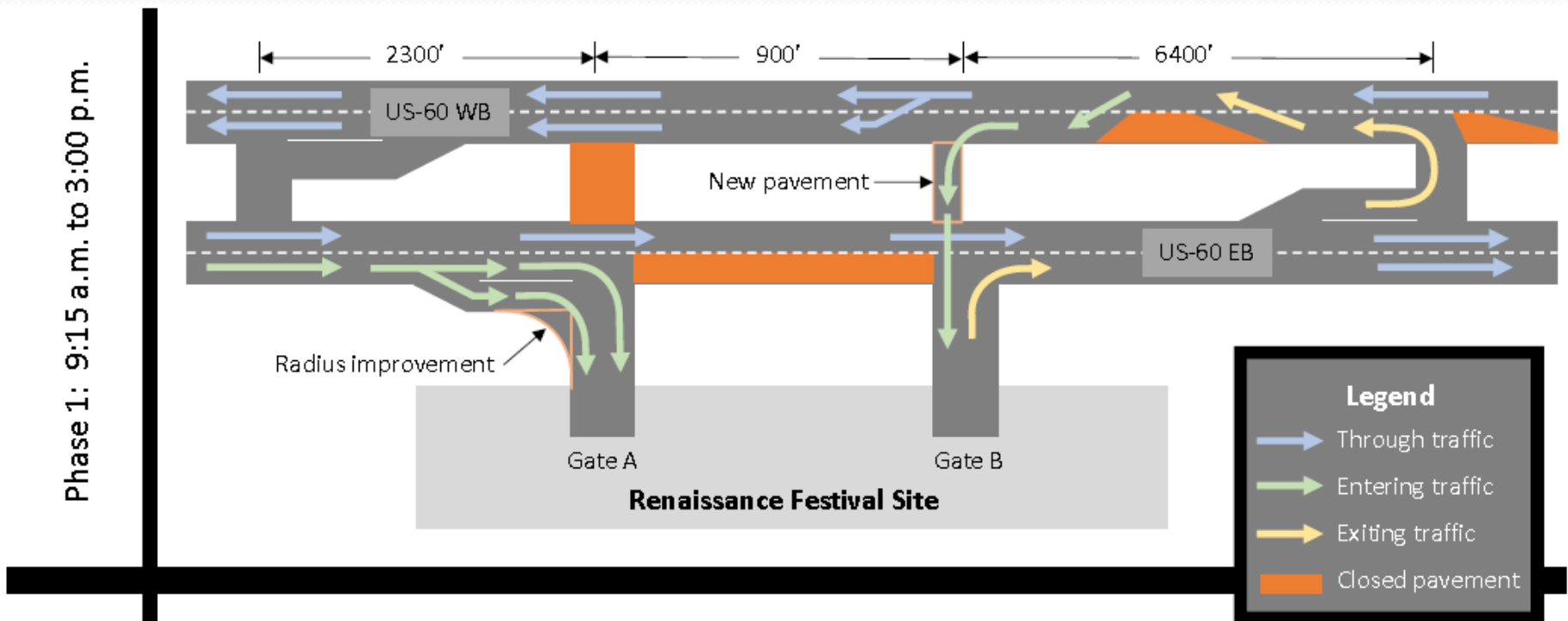


This diagram is not to scale. It is a schematic illustration of proposed traffic flow during the 2018 Arizona Renaissance Festival. It is not intended to serve as a traffic control plan. A complete traffic control plan will be provided consistent with this concept.

Changes to the 2018 event

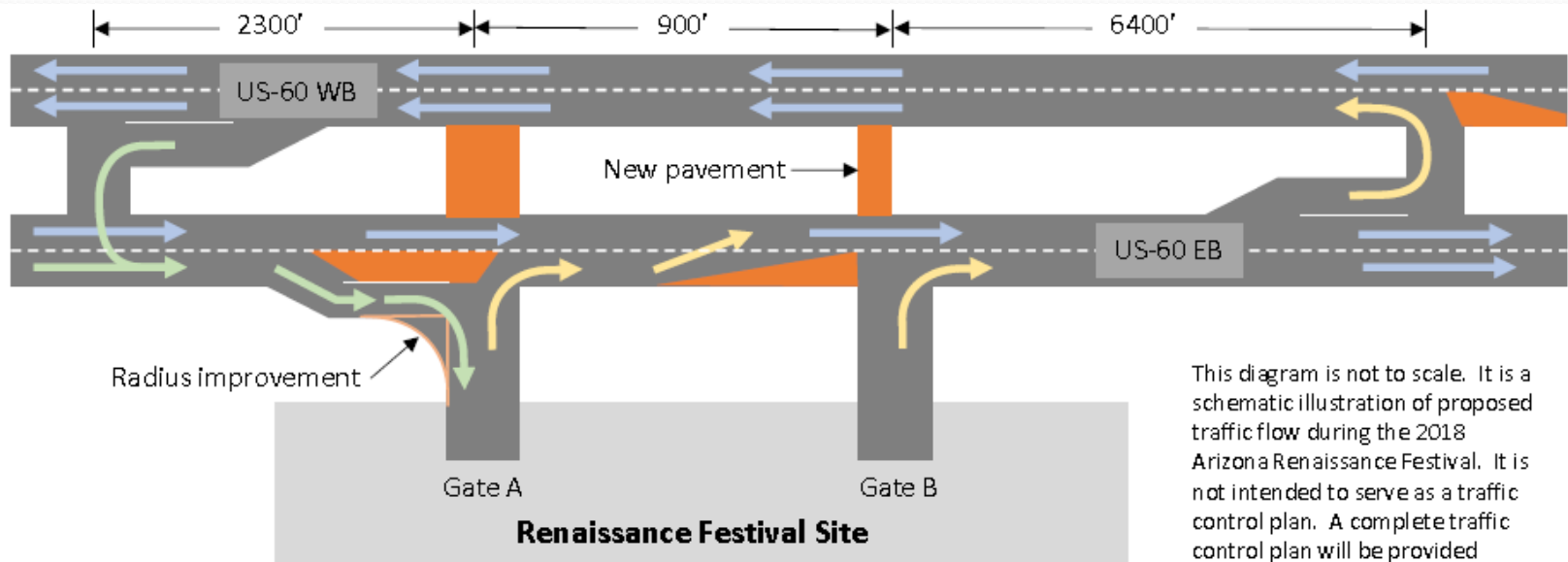
- Eastbound US 60:
 - Dual right turn in movements from Eastbound US 60 into the event grounds.
 - Modifying/increasing the radius at Gate A to facilitate the entrance into the festival grounds.
 - Additional Message Boards
- Westbound US 60:
 - Traffic from the east will be entering through Gate B

Proposed changes



Proposed changes (cont.)

Phase 2: 3:00 p.m. to close



This diagram is not to scale. It is a schematic illustration of proposed traffic flow during the 2018 Arizona Renaissance Festival. It is not intended to serve as a traffic control plan. A complete traffic control plan will be provided consistent with this concept.

Other Improvements considered but not implemented

- Adding three lanes beyond gate A to service three existing parking lots simultaneously – **Tabled**
- Lengthening the turn lane in advance of Gate A – **Tabled** – ADOT to evaluate the effectiveness of the dual right turn lane entry into the + increase in the radius + moving the inbound entry into gate B
- Placement of Millings on all parking lots (to avoid issues following periods in which it rains in advance of the opening of the event).

Next Steps

- Submittal of the complete permit application
- Pre-event meeting with all parties to go over the changes
- Construction of the proposed improvements
- Approval of the permit
- Evaluate the effectiveness of the improvement next April/May 2018 to gauge the needs for additional improvements



Questions

