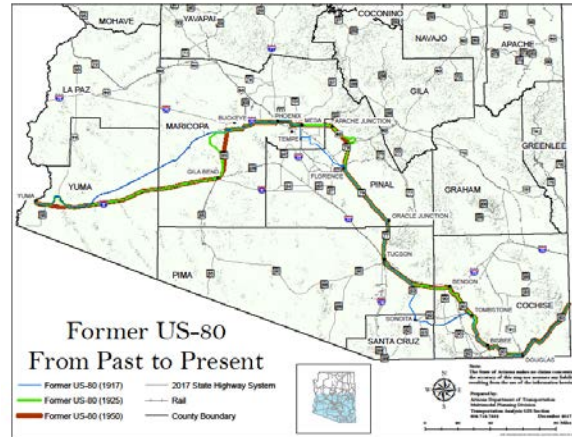


UPDATE AND POSSIBLE ACTION TO DESIGNATE FORMER U.S. HIGHWAY 80 AS A HISTORIC ROAD

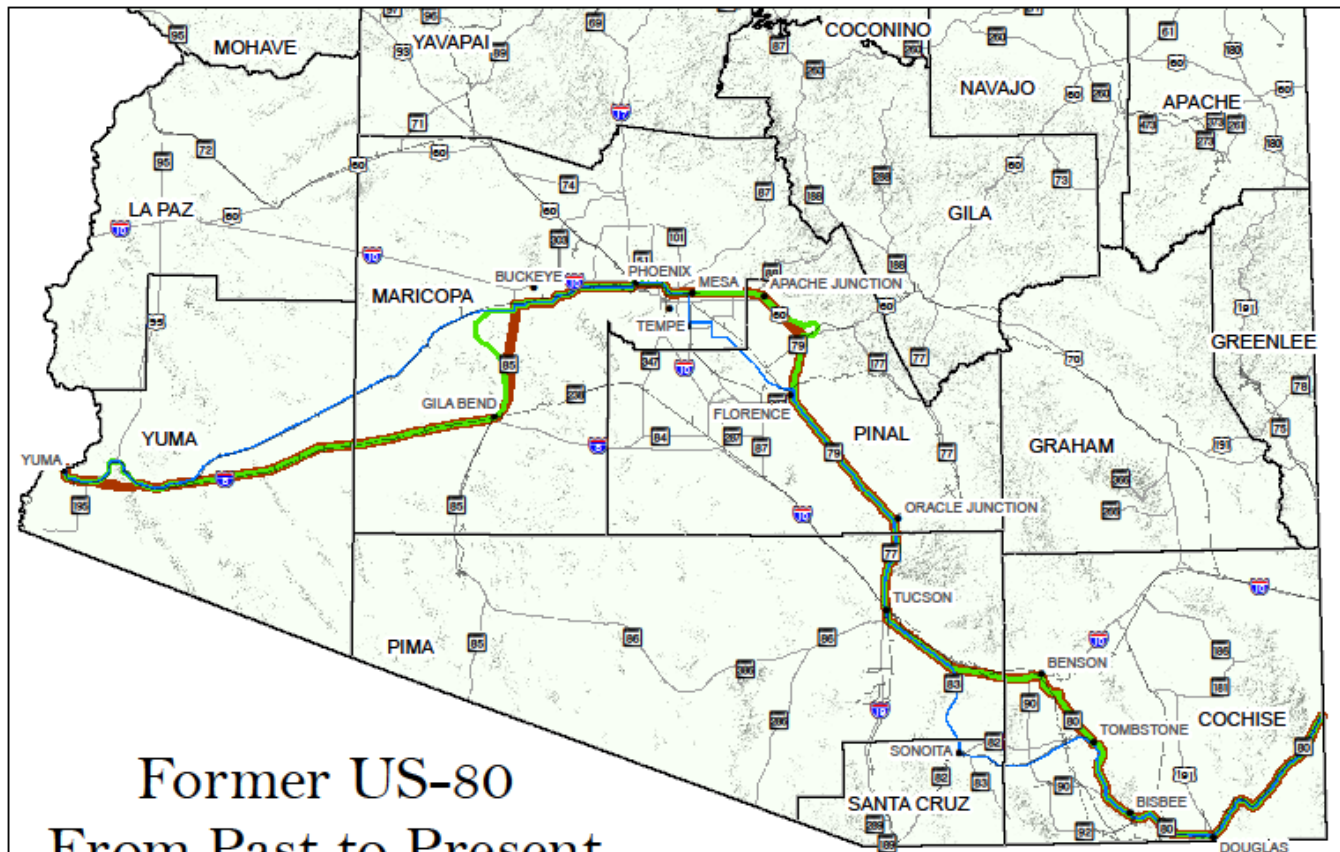


Presented to State Transportation Board

January 19, 2018

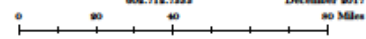
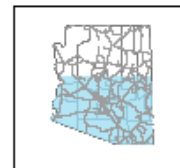
BACKGROUND

- ▶ **Background**: On June 20, 2017, the Arizona Parkways, Historic and Scenic Roads Advisory Committee (PHSRAC) made the following recommendations to the State Transportation Board:
 - ... designation of the the alignment of former US Highway 80 as an historic road...
 - ... as part of the development of the related Corridor Master Plan, segmental evaluation be conducted of the extent and quality of the resources ...and...
 - ... these evaluations be considered in the ultimate Corridor Management Plan.
- ▶ **Purpose**: Upon recommendation from the PHSRAC, the Director shall present it to the State Transportation Board, which may designate or establish a historic road.



Former US-80 From Past to Present

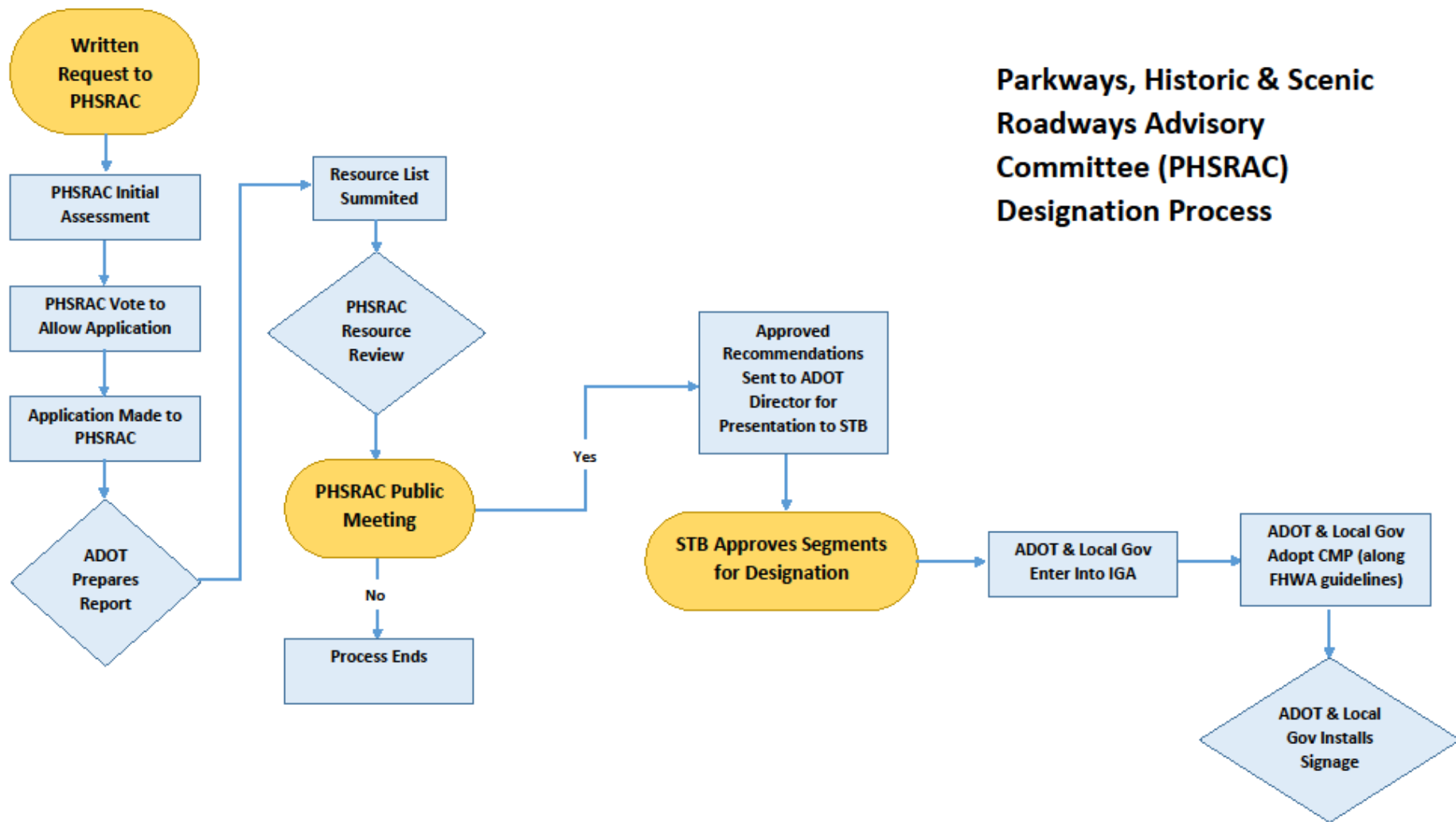
- Former US-80 (1917)
- Former US-80 (1925)
- Former US-80 (1950)
- 2017 State Highway System
- +— Rail
- County Boundary



Note:
The State of Arizona makes no claims concerning the accuracy of this map nor assumes any liability resulting from the use of the information herein.

Prepared by:
Arizona Department of Transportation
Multimodal Planning Division
Transportation Analysis GIS Section
602.714.5243 December 2017

Parkways, Historic & Scenic Roadways Advisory Committee (PHSRAC) Designation Process



NAMING OF A PORTION OF US60 / FORMER US80 FOR GOVERNOR ROSE MOFFORD

- ▶ Current Status:

- On-going coordination with AZ State Board on Geographic and Historic Names

- Segment of US 60 is part of AZ Highway System and will be addressed by ADOT report

RECOMMENDED BOARD MOTIONS

1. Present PHSRAC Motion: "The PHSRAC recommends to the Arizona State Transportation Board the designation of the primary and secondary submissions for the alignment of (former) U.S. Highway 80 as an historic road with the further recommendation that as part of the development of the related Corridor Management Plan, segmental evaluation be conducted of the extent and quality of the resources and that these evaluations be considered in the ultimate Corridor Management Plan."
2. Offer and approve a ***substitute motion***: (See Next Slide)

RECOMMENDED BOARD MOTIONS (CONT'D)

2. ***Substitute Motion:*** Motion to Designate the of the primary and secondary road sections for the *non-State Highway alignments* of (former) U.S. Highway 80 as a historic road effective upon completion of an interagency agreement between ADOT and the local entity pursuant to Arizona Administrative Code R17-3-807.
3. **Second Motion:** Motion to request that ADOT complete the State Highway System segments report as required by Arizona Administrative Code R17-3-803 as expeditiously as possible.