

State Transportation Board Central District Engineer's Report

Presentation By: Randy Everett

Date: September 20, 2019

KEY CONSTRUCTION STAFF:

RANDY EVERETT – SENIOR ADMINISTRATOR

JAMES HARTMAN – ASSISTANT DISTRICT ENGINEER

DYLAN CARDIE – ASSISTANT DISTRICT ENGINEER

Current Construction Projects

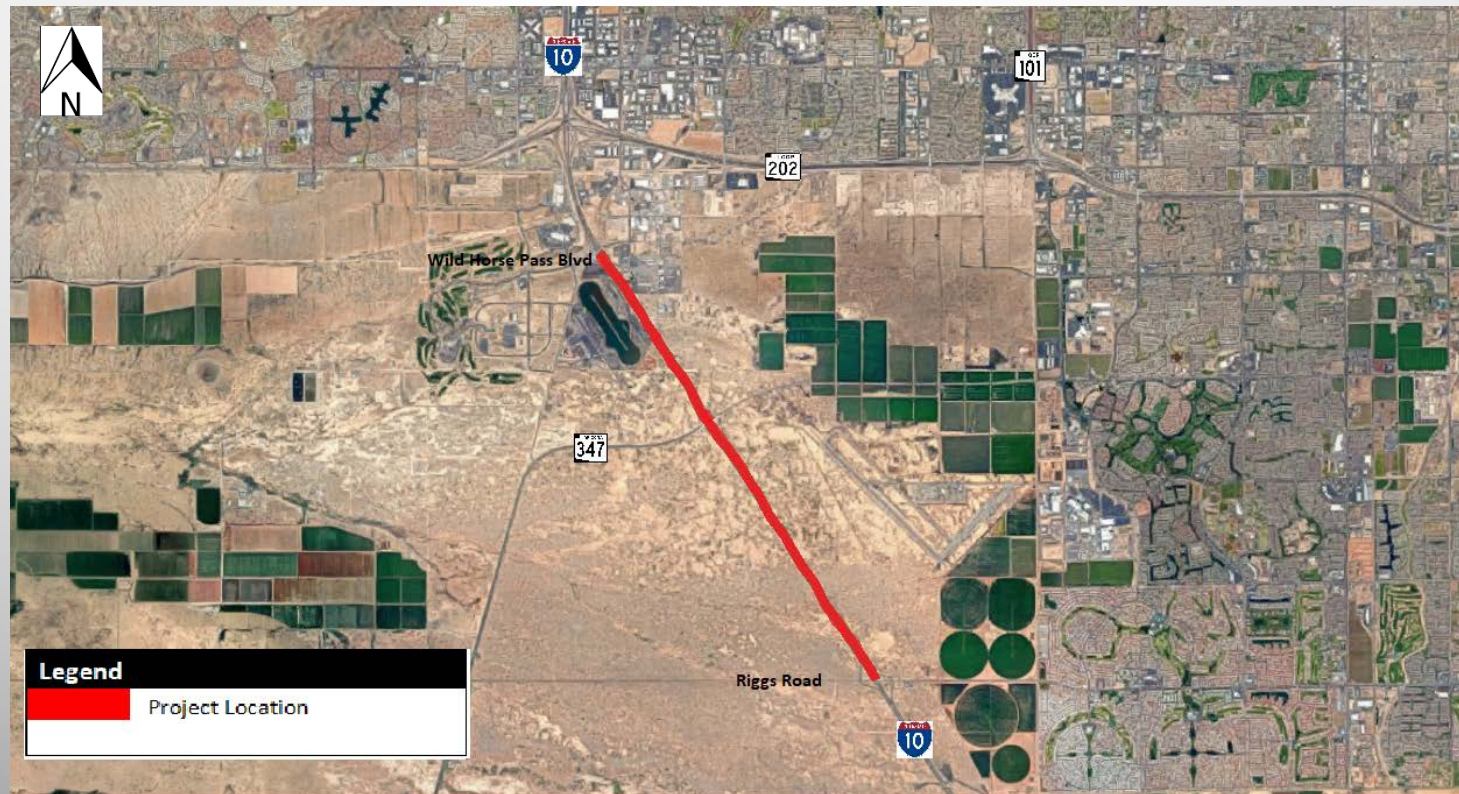
Preservation Projects (Pavement and Bridge)

Modernize Projects (Minor Projects, Safety)

Expansion Projects

A large, faint, light gray star graphic is positioned in the bottom right corner of the slide. The star has multiple points and a textured, slightly distressed appearance, serving as a background element.

Preservation: I-10 at Wild Horse Pass



Preservation Projects

- I-10 EB at Wild Horse Pass
 - Project Limits: Wild Horse Pass Blvd to Riggs Road
 - Fog Seal treatment: Seals narrow cracks, restores lost flexibility to pavement surface, and preserves underlying pavement structure
 - Status: Completed 4/7/2019

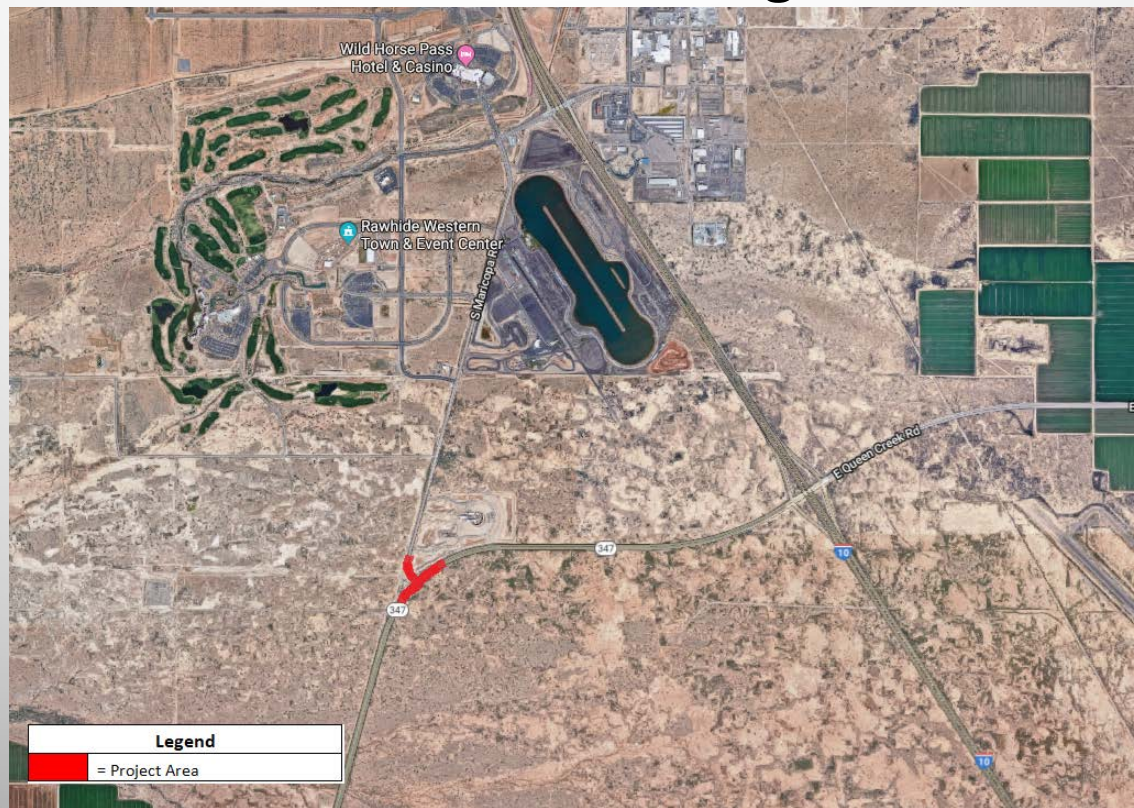


Preservation Projects

- I-10 WB at Wild Horse Pass
 - Project Limits: Wild Horse Pass Blvd to Riggs Road
 - Fog Seal treatment: Seals narrow cracks, restores lost flexibility to pavement surface, and preserves underlying pavement structure
 - Status: To be Completed 9/29/2019



Modernization: Interchange Location



Modernization Projects

- High T Interchange at Maricopa Road & SR347
 - These intersections are made up of a main line (SR-347) and stem (Maricopa Rd)
 - The main line consists of a continuous green signal for through traffic as well as extended left turn lanes to and from the stem for enhanced safety



Figure 1: Aerial view of the CGT in Grand Junction, Colorado

Source: CDOT

Expansion: Picacho on Interstate 10





Expansion Projects

- Interstate 10: State route 87 to town of Picacho
 - Project limits: Sunshine Blvd to East of Picacho Hwy
 - Project realigns and widens I-10 from two to three lanes in both directions and also replaces bridges at SR-87 interchange and over the Union Pacific Railroad on SR-87
 - Status: 94% complete and 97% of funds expended
 - Dust Monitoring System is a part of this project

Expansion: I-8 to Earley on Interstate 10



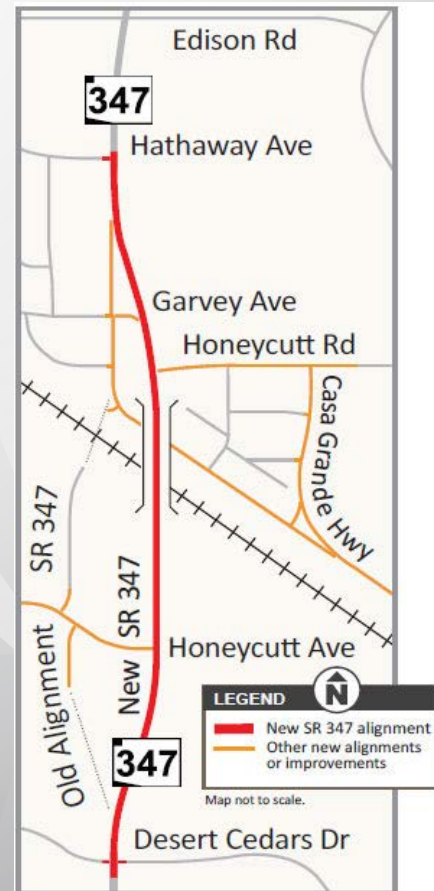


Expansion Projects – Casa Grande

- Interstate 10: Earley Road to Interstate 8
 - Project Limits: Earley Road to Interstate 8
 - Project adds one lane in each direction and replaces the existing bridge over Jimmie Kerr Blvd and the Union Pacific Railroad.
 - This project will increase freeway capacity, improve auxiliary lanes, and enhance aesthetics of the roadway
 - Status: 100% complete and 107% funding expended

Expansion Projects

- SR-347 at Union Pacific Railroad
 - Project Limits: Hathaway Ave – Alterra Pkwy/Desert Cedars Drive
 - This project shifted SR-347 to a new alignment between Hathaway Ave and Alterra Pkwy/Desert Cedars Drive allowing for a 500-foot-long bridge over the Union Pacific Railroad and Maricopa-Casa Grande highway
 - Status: 90% complete and 91% funding expended
 - Overpass is currently open to traffic



Questions?

A large, faint, light gray star graphic is positioned in the lower right background of the slide, with rays emanating from its top point.