

# ADOT's Performance-Based Planning to Programming (P2P) Process



Greg Byres, P.E.  
ADOT Multimodal Planning Division Director

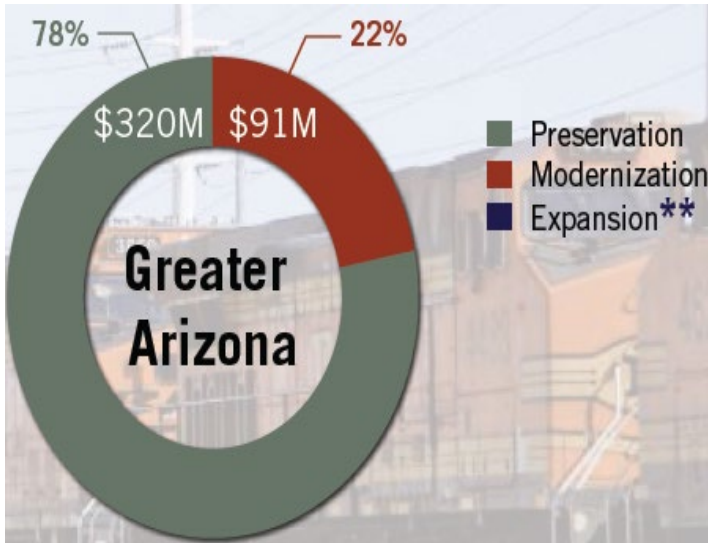
# Presentation Topics

- ❑ **P2P Background and Overview**
- ❑ Process
- ❑ Resource Requirements
- ❑ Continuous Improvement

# What is P2P?



## Long Range Transportation Plan



## Five-Year Construction Program

**2019-2023**  
Five-Year Transportation  
Facilities Construction Program

ADOT

ARIZONA

THE GRAND CANYON STATE  
WELCOMES YOU

# Why P2P?

- ❑ **Performance-Based Planning to Programming is the Law**
  - Federal Regulation (FAST Act)
    - 23 USC Section 135(d)(2), and 49 USC Section 5304(d)(2)
  - State Statute
    - ARS Title 28, Chapter 2, Article 7 (§ 28-501 through § 28-507)
  
- ❑ **Responsible Planning and Financial Stewardship**
  - Select the Best Set of Projects
  - Optimize Use of Public Funds

# How is P2P Performance-based?



- **P2P Criteria are aligned with Federally-required, Arizona-focused Performance Measures, including:**
  - **Pavement:**
    - Percent of Interstate pavement in good and poor condition
    - Percent of non-Interstate pavement in good and poor condition
  - **Bridge:**
    - Percent of NHS bridge deck area in good and poor condition
  - **Freight:**
    - Percent of person-miles that are reliable (Interstate and Non-Int)
  - **Safety:**
    - Fatalities and Serious Injuries (number and rate)
    - Non-motorized crashes

# P2P Definitions & Sample Work Types



Preservation (Pavement)	Preservation (Bridge)	Modernization	Expansion
Improve or sustain condition to state of good repair	Improve or sustain condition to state of good repair	Upgrade efficiency, functionality or safety	Add capacity by adding new facilities
<u>Work Examples:</u> Concrete repair Pothole repair Mill & fill Overlay Chip seal Crack seal Major AC overlay Road replacement Spot reconstruct	<u>Work Examples:</u> Approach overlay Barrier repair Crash repair Scour repair Deck joint/seal replacement Deck overlay Superstructure replacement	<u>Work Examples:</u> Intersection enhancement ADA/pedestrian Bike lane/shoulder Climbing/passing lane Drainage work ITS project Rockfall mitigation	<u>Work Examples:</u> New grade-separated overpass/underpass New lanes New road

# P2P Project Types and Scoring Basics

## Pavement Preservation

Greater AZ  
Annual  
Investment  
Target:  
\$260M

Scoring:  
Technical = 35%  
District = 30%  
Safety = 25%  
Policy = 10%

## Bridge Preservation

Greater AZ  
Annual  
Investment  
Target:  
\$60M

Scoring:  
Technical & Safety = 60%  
District = 30%  
Policy = 10%

## Modernization

Greater AZ  
Annual  
Investment  
Target:  
\$91M

Scoring:  
Technical = 35%  
District = 30%  
Safety = 25%  
Policy = 10%

## Expansion

Greater AZ  
Annual  
Investment  
Target:  
\$0M

Scoring:  
Technical = 50%  
District = 25%  
Safety = 15%  
Policy = 10%

# Pavement Preservation Scoring



Category	P2P Rating Criteria	Weighting
Technical	Pavement Condition: International Roughness Index, Cracking, Rutting, truck volume, etc.	35%
District	District Engineer Evaluation	30%
Safety	Safety Analyst Tool: Level of Safety Service	25%
Policy	Freight Percentage (3%) Functional Classification (3%) External Funding Contribution (4%)	10%
		100%



# Bridge Preservation Scoring



Category	P2P Rating Criteria	Weighting
Technical & Safety	Bridge Engineer Inspection: Sufficiency rating, superstructure and substructure condition, deck condition, fracture criticality, scour criticality, detour length, and more	60%
District	District Engineer Evaluation	30%
Policy	Freight Percentage (3%) Functional Classification (3%) External Funding Contribution (4%)	10%
		100%

# Modernization Scoring



Category	P2P Rating Criteria	Weighting
Technical	Technical Group Ranking: Varies by project type – Safety, intersections, shoulders, bike/ped, drainage, fence, guardrail, rock fall, ITS, traffic control, tree removal, wildlife safety, etc.	35%
District	District Engineer Evaluation	30%
Safety	Safety Analyst Tool: Level of Safety Service	25%
Policy	Freight Percentage (3%) Functional Classification (3%) External Funding Contribution (4%)	10%
		100%

# Expansion Scoring



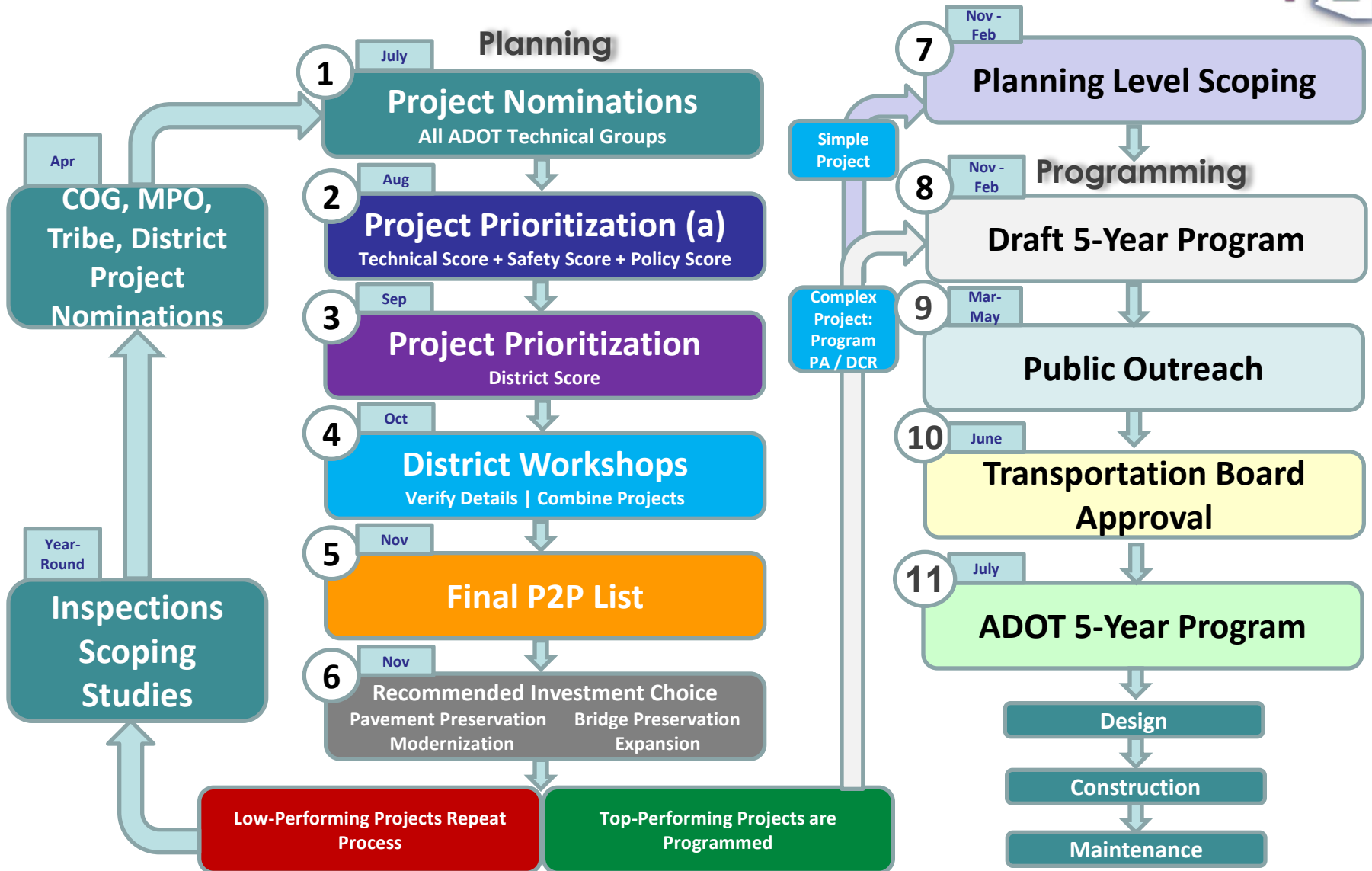
Category	P2P Rating Criteria	Weighting
Technical	Level of Service (10%) Average System Speed (5%) System Reliability (10%) System Reliability – Freight (10%) Cost Effectiveness (10%) New Permanent Jobs Created (5%)	50%
District	District Engineer Evaluation	25%
Safety	Safety Analyst Tool: Level of Safety Service	15%
Policy	Freight Percentage (3%) Functional Classification (3%) External Funding Contribution (4%)	10%
		100%

# Presentation Topics



- ✓ P2P Overview
- Process**
- Resource Requirements
- Continuous Improvement

# P2P Process Flowchart



# Presentation Topics

- ✓ P2P Overview
- ✓ Process
- Resource Requirements**
- Continuous Improvement

# Resources



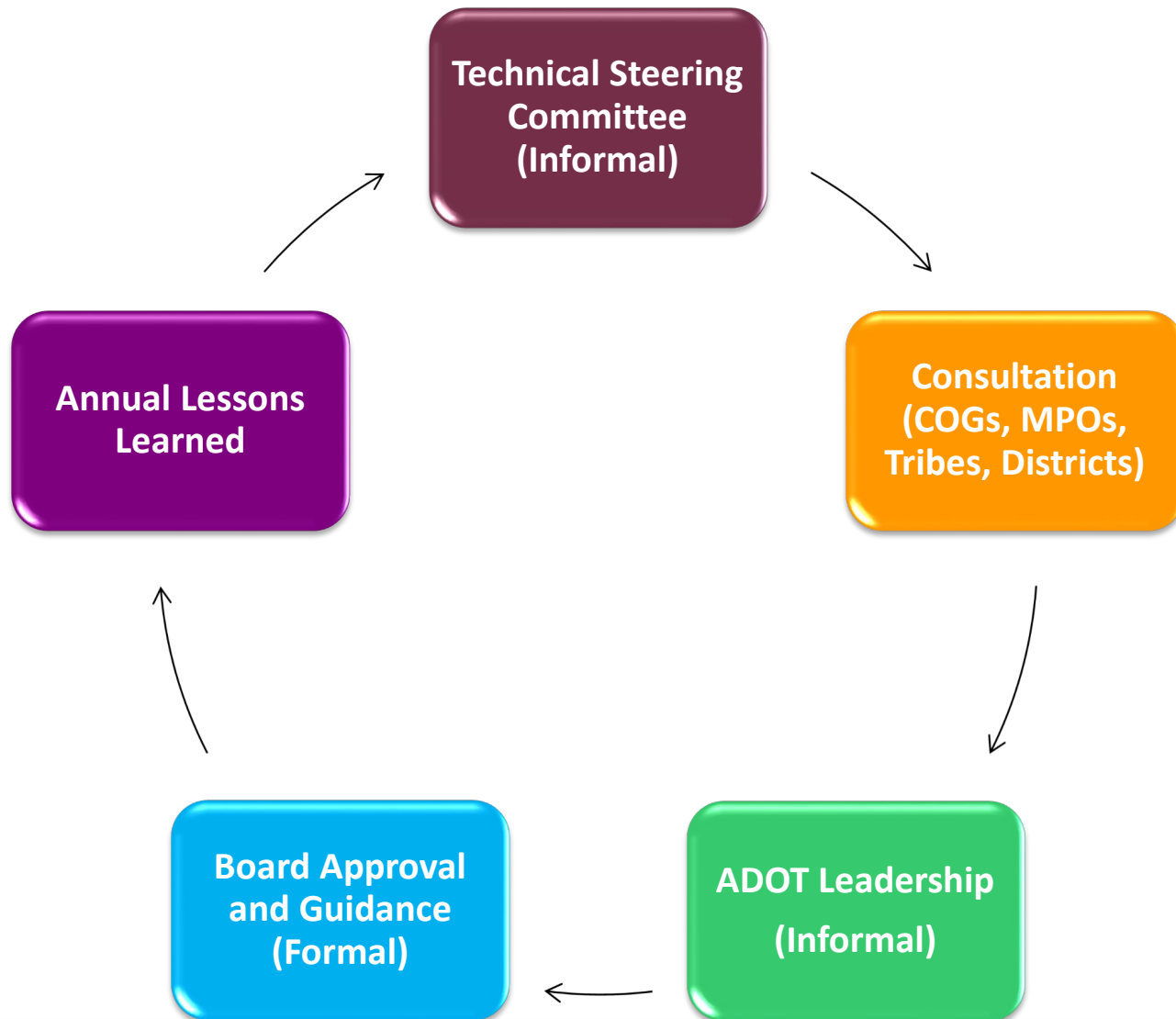
Group/Staff	Role
P2P Manager	Manages Project Prioritization Process
STIP Manager	Manages STIP Approval Process
Regional Planners (x3)	Facilitation / Coordination / Review
Pavement Engineers (x3) Bridge Engineers (x3)	Inspection / Prioritization / Coordination
Other Technical Engineers / Planners (x10)	Project Prioritization / Technical Scores
Safety Engineers (x2)	Safety Analysis / Safety Scores
District Engineers (x21+)	Project Prioritization / Construction Input
Traffic / Economic Modelers (x2)	Technical Expansion Criteria
Regional Planning Agencies (MPOs/COGs x12)	Project Identification / Coordination / Review
ADOT Leadership & Transportation Board	Guidance and Decision-making

# Presentation Topics

- ✓ P2P Overview
- ✓ Process
- ✓ Resource Requirements
- ❑ **Continuous Improvement**



# Continuous Improvement (AMS)



# ADOT P2P Contact

**Dan Gabiou, CPM**

Regional Planning / P2P Manager  
ADOT Multimodal Planning Division

602-712-7025

DGabiou@azdot.gov

ADOT P2P Website:

[azdot.gov/planning/transportation-programming/planning-programming](http://azdot.gov/planning/transportation-programming/planning-programming)



**Questions**

**Comments**

**Guidance**

