

Arizona State Transportation Board

Financial Report

Presentation by: Kristine Ward, CFO

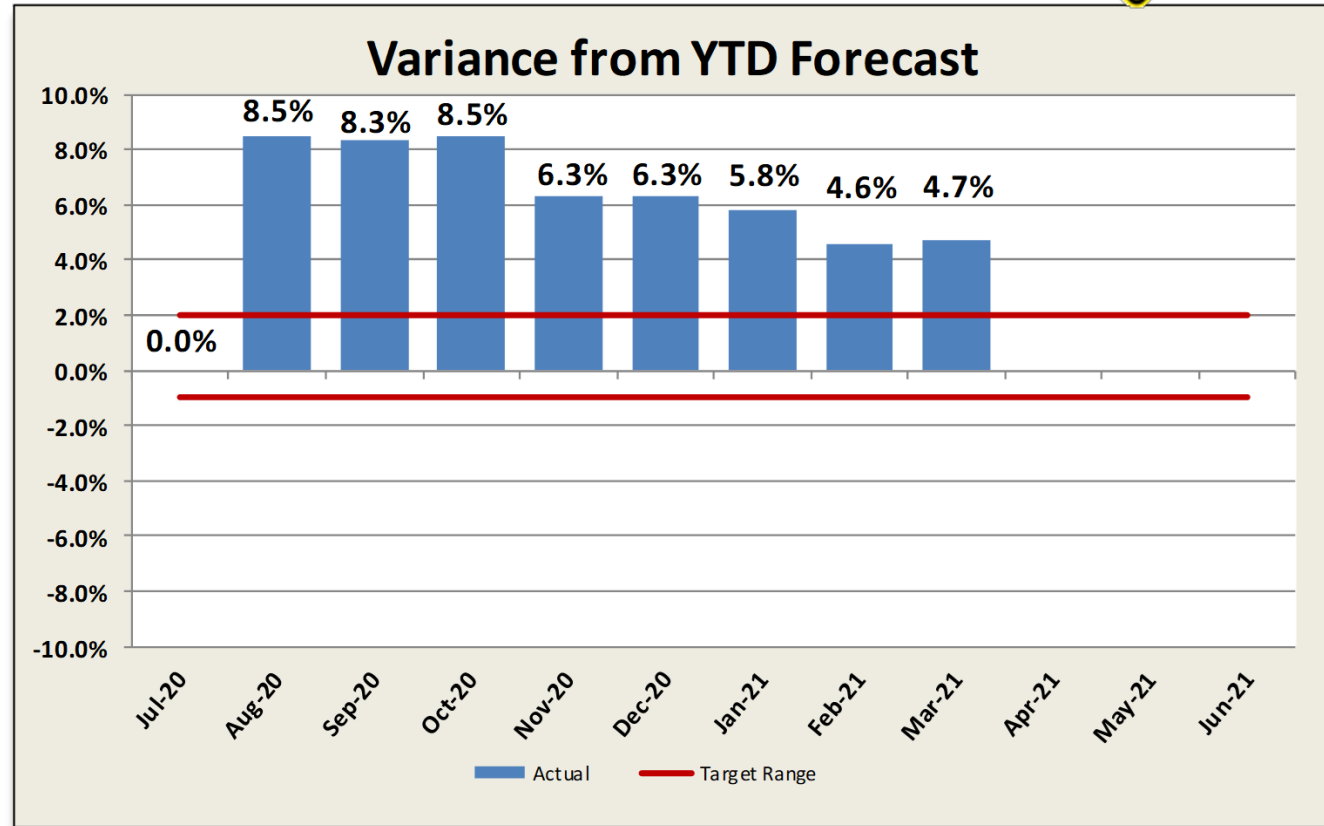
April 16, 2021

Revenue Report:

Highway User Revenue Fund (HURF)



- **Gas tax** – Strong decline month (-13.3%), strong decline FY21 (-10.1%)
- **Diesel tax** – Moderate growth month (7.9%), strong growth FY21 (8.0%)
- **VLT** – Strong growth month (11.8%), strong growth FY21 (11.6%)
- **Registration** – Moderate growth month (9.1%), strong growth FY21 (9.3%)



Highway User Revenue Fund (HURF): Revenue Forecast vs. Actual

Revenue Category	March				
	FY 2020 Actual	FY 2021 Actual	FY 2020- FY 2021 % Chg	FY 2021 Forecast	FY 2021 % Chg from Forecast
Gasoline Tax	\$43,933	\$38,074	-13.3%	\$40,420	-5.8%
Use Fuel Tax	19,134	20,654	7.9%	19,290	7.1%
Vehicle License Tax	37,604	42,049	11.8%	37,980	10.7%
Motor Carrier Fee	5,062	5,458	7.8%	5,040	8.3%
Registration	21,056	22,970	9.1%	21,210	8.3%
Other	4,022	5,724	42.3%	3,640	57.2%
Total	\$130,810	\$134,929	3.1%	\$127,580	5.8%

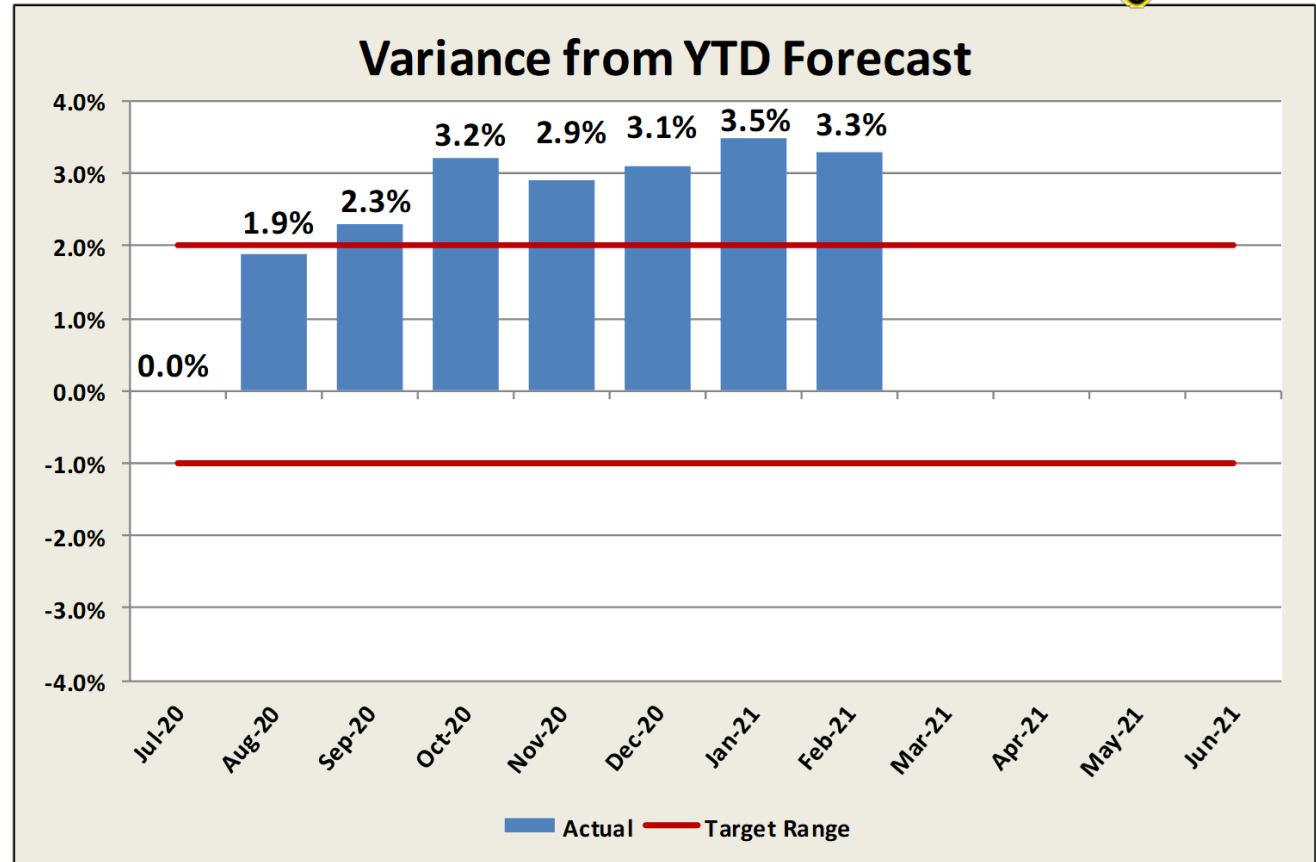
Revenue in Thousands

Revenue Report:

Regional Area Road Fund (RARF)



- **Retail sales** – Strong growth month (15.2%), strong growth FY 2021 (17.1%)
- **Contracting** – Moderate growth month (1.6%), moderate growth FY 2021 (5.6%)
- **Restaurant & Bar** – Strong decline month (-13.0%), strong decline FY 2021 (-13.1%)



Regional Area Road Fund (RARF): Revenue Forecast vs. Actual

Revenue Category	February				
	FY 2020 Actual	FY 2021 Actual	FY 2020- FY 2021 % Chg	FY 2021 Forecast	FY 2021 % Chg from Forecast
Retail Sales	\$22,325	\$25,717	15.2%	\$23,218	10.8%
Contracting	4,267	4,334	1.6%	4,907	-11.7%
Utilities	2,254	2,339	3.7%	2,277	2.7%
Restaurant & Bar	4,893	4,254	-13.0%	4,305	-1.2%
Rental of Real Property	4,454	3,765	-15.5%	4,499	-16.3%
Rental of Personal Property	1,622	1,439	-11.3%	1,492	-3.6%
Other	1,637	935	-42.9%	1,256	-25.6%
Total	\$41,452	\$42,783	3.2%	\$41,954	2.0%

Revenue in Thousands

Additional Updates

- **Federal Aid Program**



- **Debt Financing Program**

- HURF Capacity
- RARF Capacity

- **Cash Management**

