

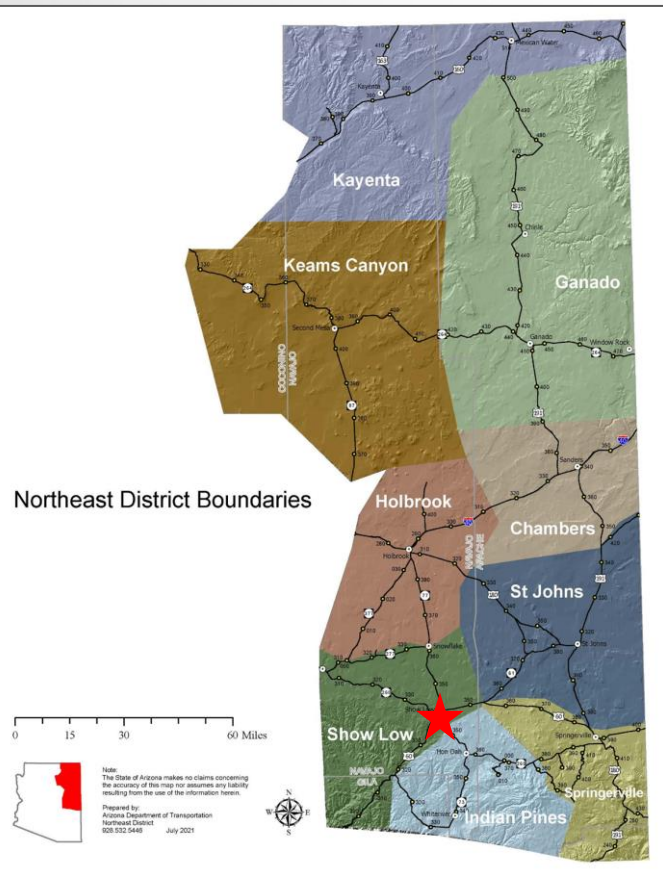
Arizona State Transportation Board Meeting

Northeast District Project Update

Ed Wilson
Northeast District Engineer
July 15, 2021

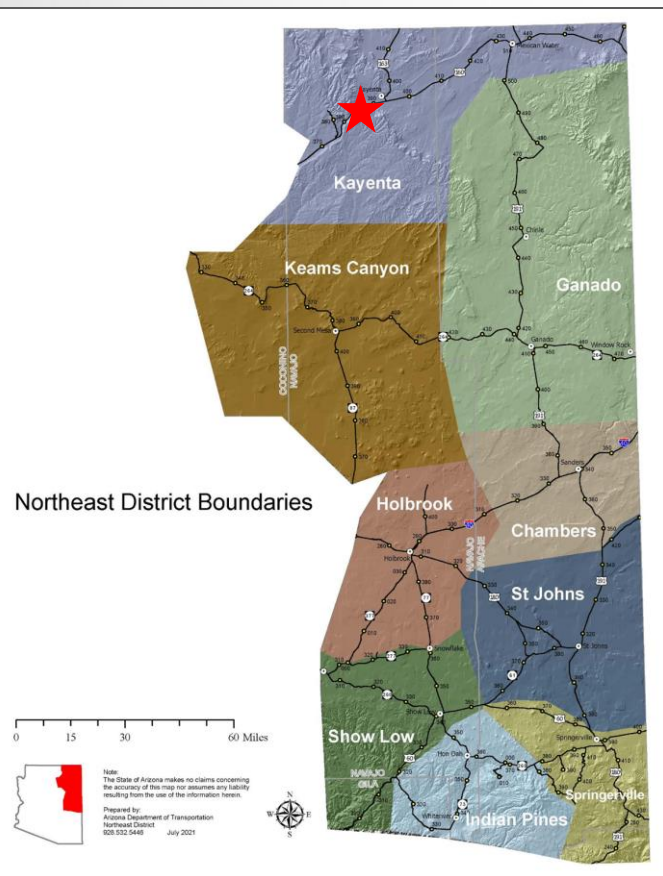
Current Projects

US 60 to Knottingham Lane and FH300 to 40th St.
Pavement Preservation with ADA Upgrades



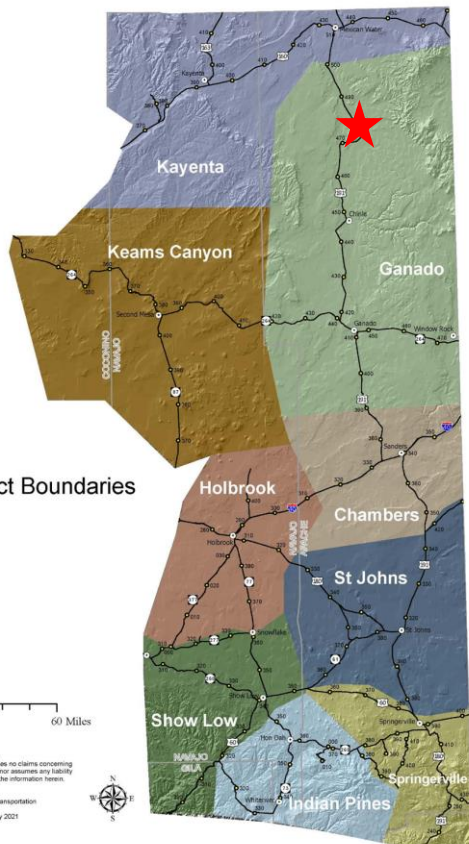
Current Project

US 160 Longhouse Valley to Kayenta Pavement Preservation



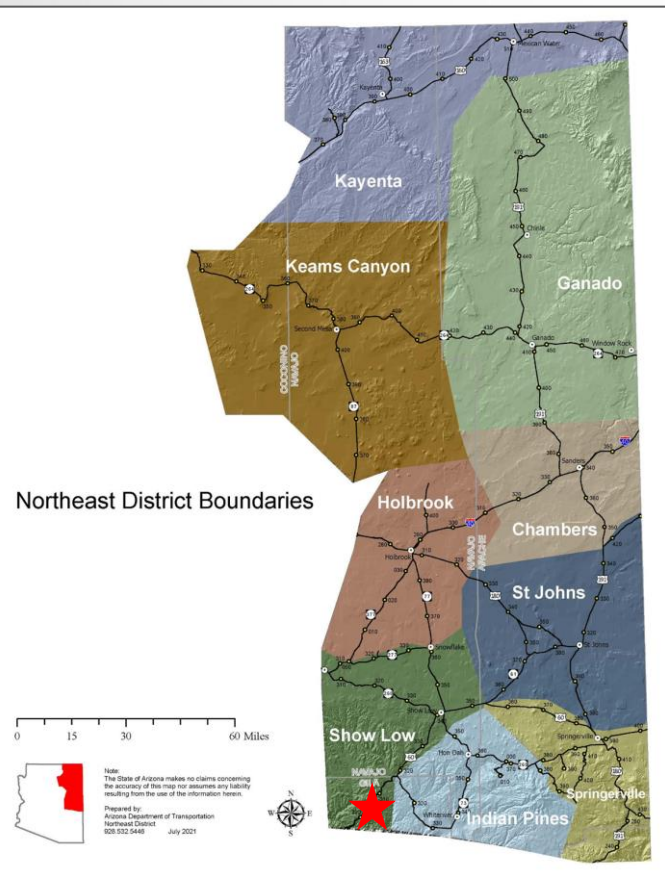
Current Project

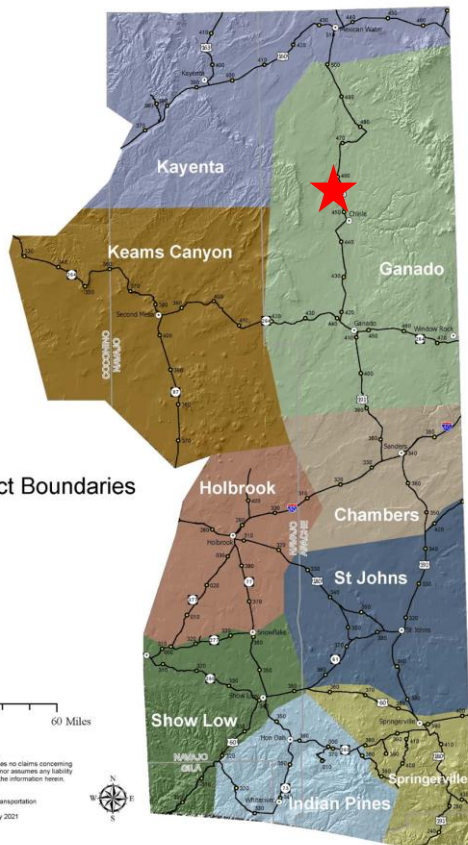
US 191 Bridges - Chinle Wash to Lukachukai Wash
Replace 2 Bridges and Rehabilitate 2 Bridges



Current Projects

US 60 Flying V Slope Failure





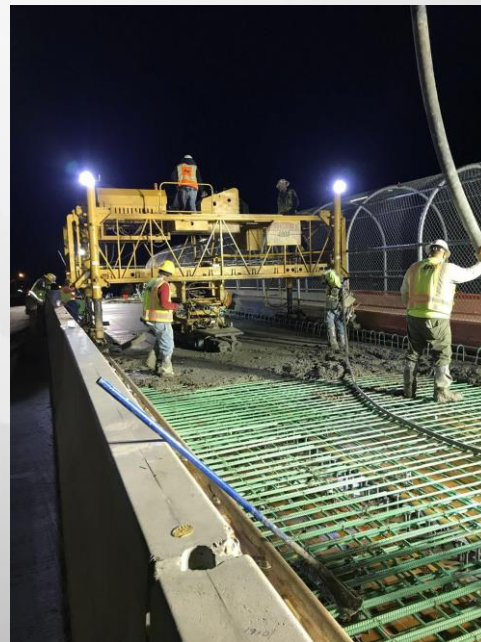
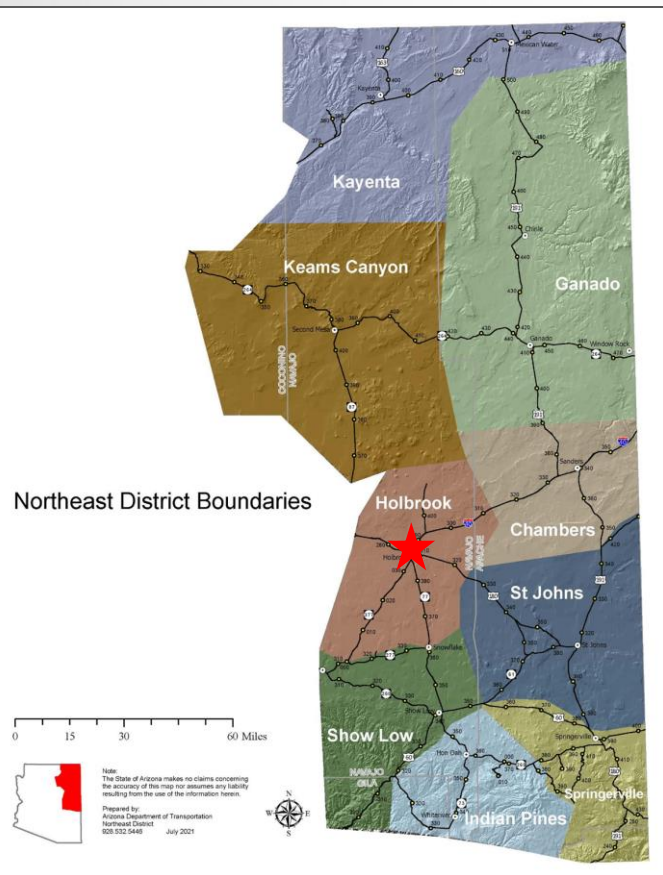
Current Projects

US 191 - Chinle to Black Mountain Wash Shoulder Widening



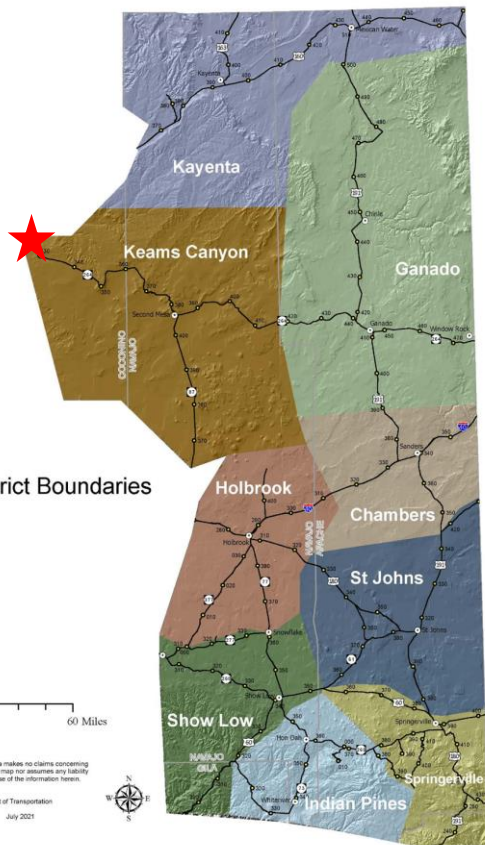
Current Projects

I40 - Hermosa Drive Overpass Bridge Deck Replacement



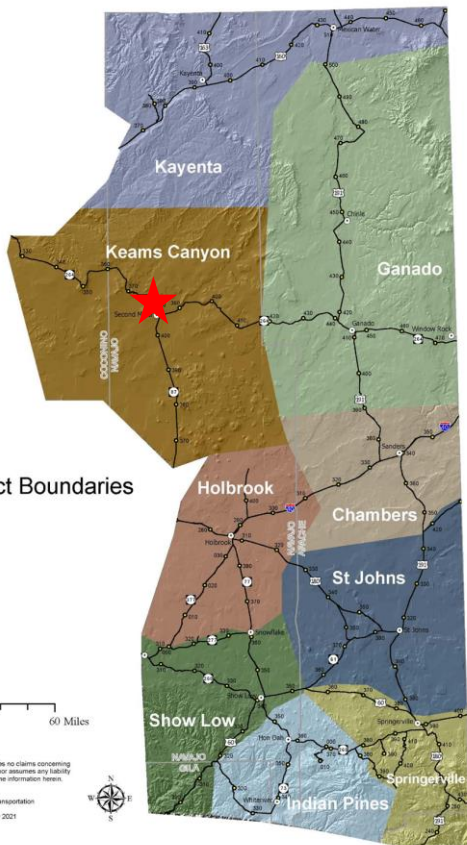
Current Projects

Moenkopi Wash Bridge Bridge Deck Replacement



Current Advertised Project

SR 264 and IR4 Intersection Improvements



Northeast District Boundaries

0 15 30 60 Miles

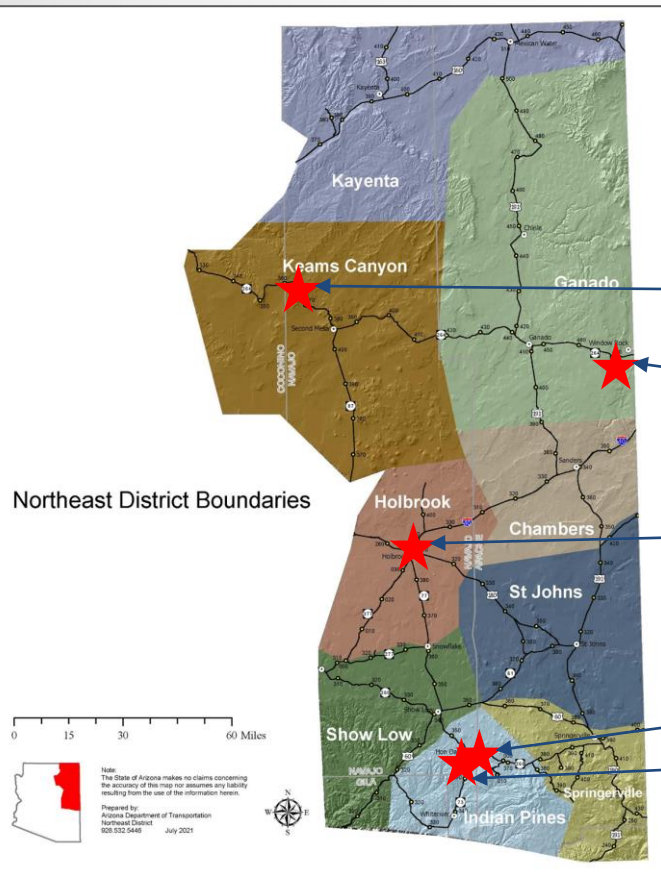


Note:
The State of Arizona makes no claims concerning
the accuracy of this map nor assumes any liability
resulting from the use of the information herein.

Prepared by:
Arizona Department of Transportation
Northeast District
808.532.5448
July 2021



Current Projects Life Extension Projects



SR 264 - MP 359.5 to BIA 503

SR 264 - Summit to New Mexico State Line

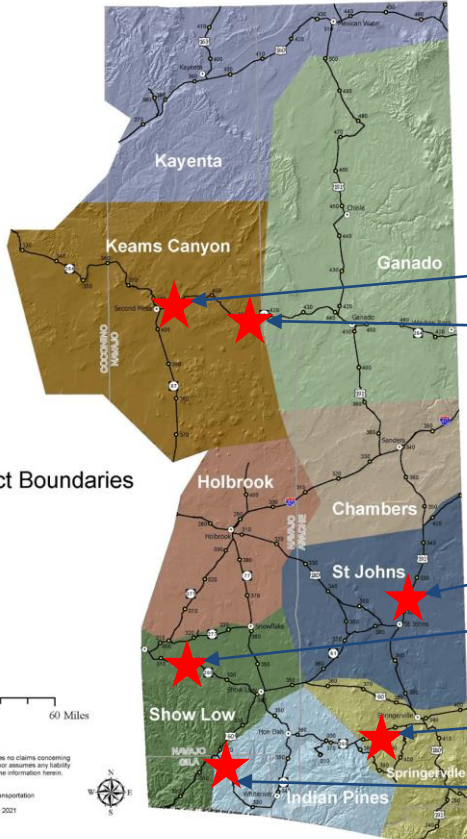
I 40 - Perkins Valley to Holbrook

SR 260 - Honda to McNary

SR73 - South of Black Canyon to Jct SR 260

Current Projects

FY23 State Special Line Item Surface Projects



Northeast District Boundaries

0 15 30 60 Miles



Note:
The State of Arizona makes no claims concerning
the accuracy of this map nor assumes any liability
resulting from the use of the information herein.
Prepared by
Arizona Department of Transportation
Northeast District
808.532.5448
July 2021



SR 264 MP 384-390.6 Chip Seal

SR 264 MP 408-418 Chip Seal

US 191 MP 320-328 Chip Seal

SR 260 MP 317-321.4 Chip Seal

SR373 MP 385.6-390.2 Chip Seal

SR 73 MP 310.3-342 Chip Seal

Thank You!

Questions?

A large, faint, light gray starburst graphic is positioned in the lower right quadrant of the slide. It features a central five-pointed star with numerous rays emanating from it, creating a sunburst effect.