

ARIZONA STATE TRANSPORTATION BOARD

MULTIMODAL PLANNING DIVISION REPORT
August 19, 2022

Paul Patane
Multimodal Planning Division

Current Planning Activities

- Tribal Transportation Update
- State Match Advantage for Rural Transportation (SMART) Fund
- Freight Plan Update
- I-10, Loop 202 to SR-387

Tribal Transportation Updates

Arizona Statewide Rest Area Study - Tribal Outreach:

- During July, outreach communication was conducted with the Gila River Indian Community, Navajo Nation, San Carlos Apache Tribe and White Mountain Apache Tribe.
- The four Tribes are directly impacted due to I-10, I-40 and US60 rest areas located within tribal land.
- A meeting with the San Carlos Apache Tribe is tentatively scheduled for August 17.
- The Gila River Indian Community has requested a meeting and pending a response on several suggested dates.

Tribal Transportation Updates

Arizona Long Range Transportation Plan (AZ LRTP):

- The development of the AZ LRTP has recently begun.
- Tribal Consultation in the development of the AZ LRTP update is mandated in federal and state legislation.
- Tribal Liaisons have participated on the project technical advisory committee assisting with coordination of the tribal outreach and consultation actions, as necessary.
- Notification letters are expected to be distributed to all twenty-two Tribal Leaders August 31.

Tribal Transportation Updates

Hopi Transportation Partnership Meeting:

- On July 21, the Hopi Tribe and ADOT Partnering Office convened their third quarterly Partnership meeting. Discussion focused on progress of Partnership goals and updates to action items from previous meeting held in April 2022.
- The Tribal liaisons are in the initial discussion of planning workshop this fall. Topics include the P2P process, LRTP, STIP, RSAs, Traffic Studies, Grants Opportunities, Tracs Program and Crash Data Collection.

Consultation with Hopi Tribe-AZ. Electric Vehicle Infrastructure Deployment Plan:

- A consultation was held August 2 to discuss Arizona's Electric Vehicle Infrastructure Deployment Plan.

Tribal Transportation Updates

Navajo Nation Outreach Activities:

- At the request of Shonto Community Governance, ADOT Northcentral District met with chapter officials and representatives on August 1, to discuss items related to a speed zone study request on US 160/SR 98, a development of a hotel, land use designations of a restaurant and RV park, use of rail crossing at SR 98 and status of Intersection Illumination at the Junction SR 98/US 160.
- Outreach communication efforts are ongoing with several Navajo Nation Chapters.
 - Some of the topics of discussion requested by the Chapters include safety and maintenance of roadways, bus pullouts, turn offs, and interest in future teaming and collaboration with ADOT, Navajo Nation DOT, Apache and Navajo Counties, and BIA.

State Match Advantage for Rural Transportation (SMART) Fund HOUSE BILL 2872

SMART Fund Overview

- Established by the Arizona Legislature in 2022 to assist eligible cities, towns, counties, and ADOT in applying and competing for federal discretionary surface transportation grants (25+ identified to date)
- Administered by ADOT, and all awards approved by STB
 - 86 eligible applicants:
 - 13 counties (not Maricopa or Pima)
 - 73 cities and towns

SMART Fund Overview

Eligible Purposes of SMART Fund

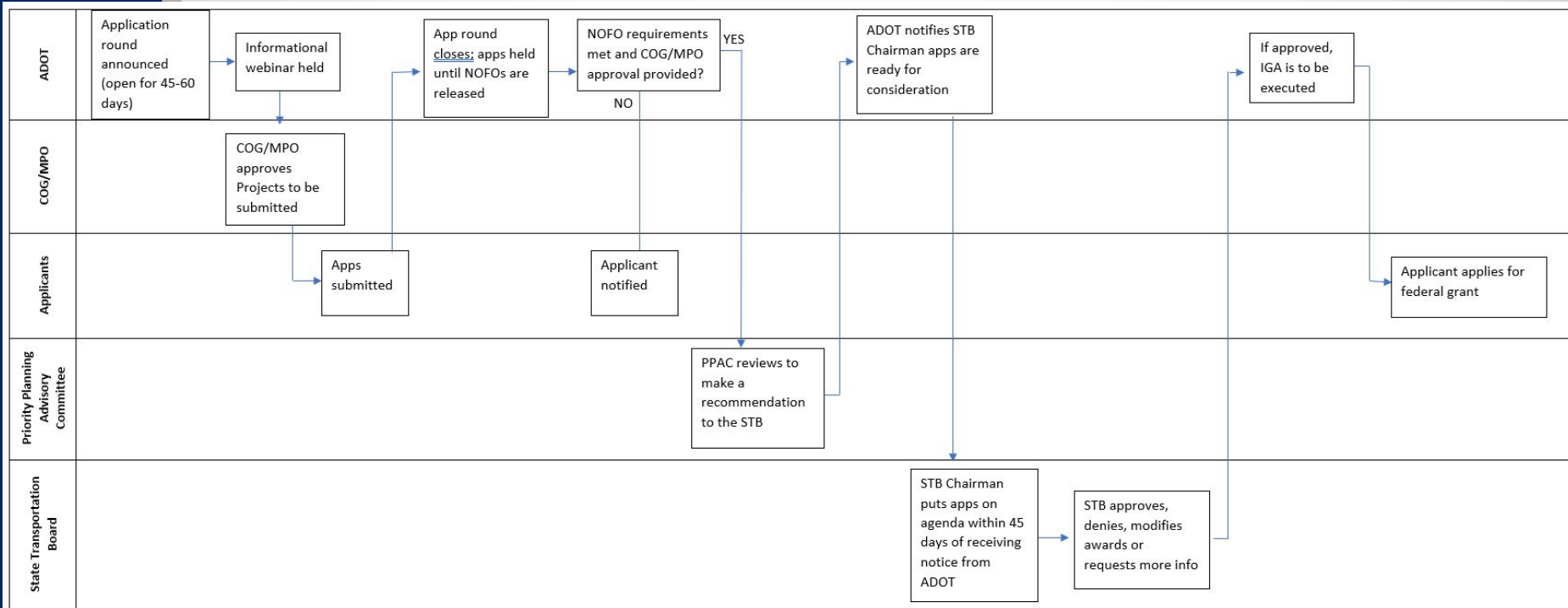
- Reimbursement of up to 50% of the costs associated with developing and submitting an application for a federal grant. This purpose is limited to counties with a population of less than 100,000 and municipalities with a population of less than 10,000.
- Match for a federal grant.
- Reimbursement of design and other engineering services expenditures that meet federal standards for projects eligible for a federal grant.

SMART Fund Overview

The SMART Fund is funded at \$50 million in state fiscal year 2023. The monies are allocated to certain categories of eligible applicants as follows:

- 20%, or \$10 million, for counties with a population of 100,000 persons or more;
- 20%, or \$10 million, for counties with a population of fewer than 100,000 persons;
- 20%, or \$10 million, for municipalities with a population of 10,000 persons or more;
- 20%, or \$10 million, for municipalities with a population of fewer than 10,000 persons; and
- 20%, or \$10 million, to ADOT, 1% may be used for administration of the fund.

SMART Fund Process





Arizona State Freight Plan

[AZ Freight Plan](#)



Why do we Need a State Freight Plan ?

- Federal Requirements:
 - Each State shall develop a freight plan (49 USC 70202) that is:
 - Updated at least every 4 years (formerly 5 years)
 - Comprehensive, and address needs over an 8-year forecast period
 - In accord with federal planning laws/regulations
 - Fiscally constrained
 - Developed in consultation with the State freight advisory committee
- Prudent Planning
 - Freight carriers are important users of the transportation system
 - The Economy (national/state) is heavily dependent on freight movement



National Freight Policy Strategic Goals

- **SAFETY:** Improve safety, security, and resiliency of the national freight system
- **INFRASTRUCTURE:** Modernize freight infrastructure and operations to grow the economy, increase competitiveness, and improve quality of life
- **INNOVATION:** Prepare for the future by supporting the development of data, technologies, and workforce capabilities that improve freight system performance

Who Comprises the Freight Advisory Committee?

- ADOT Staff
- Other State Agencies
- FHWA and other Federal Agencies
- Cities, Towns and Counties
- MPOs and COGs
- Major Universities
- Port Authorities
- Other State DOTs
- Native American Communities
- Major Utilities
- Arizona Trucking Association
- Motor Carriers / Shippers
- Natl Assn of Truck Stop Operators
- Arizona Mining Association
- Railroads
- Warehousing
- Mining / Rock Products
- Agriculture / Major Grocers
- Construction
- Aerospace
- Other Key Stakeholders

Key Freight Plan Elements

(See 49 USC 167 for full list; includes IIJA Additions)

- Freight policies, strategies, and performance measures
- Freight network (primary, critical rural, critical urban)
- How the Plan addresses national freight program/policy goals
- An inventory of facilities with freight mobility issues (e.g. bottlenecks)
- Congestion/delay caused by freight movements and mitigation strategies
- The State's most recent commercial motor vehicle parking facilities assessment
- Environmental impacts, resilience considerations, and impacts on populations
- A freight investment plan, including a list of priority projects

Funding and Eligible Projects

- Approximately \$125 million over 5 years (about \$25 million / fiscal year)
- Funding can only be used for projects in the approved Freight Plan
- Funding available for all phases (i.e. Planning through Construction)
- Eligible Projects include (see 23 USC 167 for full list):
 - Highway and bridge projects
 - Intelligent transportation systems, traffic signal optimization, & ramp metering
 - Railway-highway grade separation
 - Geometric improvements to interchanges and ramps
 - Additional road capacity to address highway freight bottlenecks
 - Truck parking, truck-only lanes, climbing and runaway truck lanes, shoulders



Truck Parking

- Eligible for federal Freight funding
- Still important...perhaps growing in importance
- How much funding to set aside for truck parking vs. infrastructure projects?
- Appropriate criteria used to prioritize truck parking improvements
 - Will likely use/update 2019 truck parking study and use results of current rest area study

Next Steps

FAC Meeting to Produce FAC Recommendations (Late August)



ADOT Formulates *Draft* Plan (Early September)



State Transportation Board Review / Comments (September - October)



USDOT Review / Comments (September – October)



State Transportation Board Endorsement of *Final* Plan (October – November)



USDOT Approval of final Arizona Freight Plan (November)

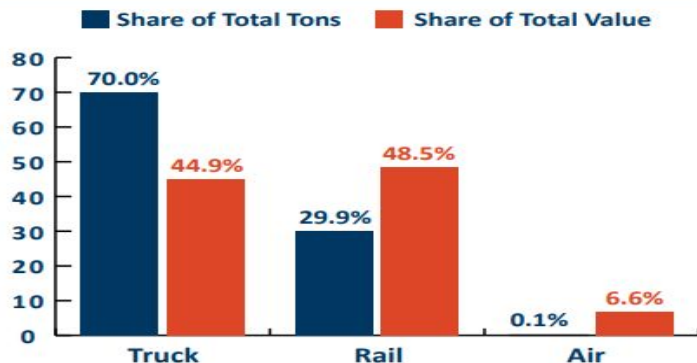


FREIGHT CHARACTERISTICS

Arizona ranks 3rd in terms of originations and 4th in terms of destinations out of all US states in terms of total freight tons.

In 2020, Arizona exported \$19.7 billion worth of goods abroad, placing it 22nd among all U.S. states - A 20 percent drop from 2019. Most of Arizona's major trading partners also imported significantly less in 2020 than 2019.

Share of Freight Flows by Mode, 2019 (Percent)



TOP TEN COMMODITIES, 2019

BY VALUE

- Mixed Commodity/Consolidated Shipments
- Small Packaged Freight Shipments
- Motor Vehicles
- Motor Vehicle Parts or Accessories
- Warehouse and Distribution Center
- Electrical Equipment
- Transportation Equipment
- Missile or Space Vehicle Parts
- Pharmaceuticals
- Miscellaneous Manufacturing Products

BY TONS

- Gravel or Sand
- Mixed Commodity/Consolidated Shipments
- Warehouse & Distribution Center
- Broken Stone or Riprap
- Petroleum Refining Products
- Miscellaneous Waste or Scrap
- Grain
- Asphalt Paving Blocks or Mix
- Bituminous Coal
- Concrete Products



I-10 | LOOP 202 TO SR-387 WILD HORSE PASS CORRIDOR

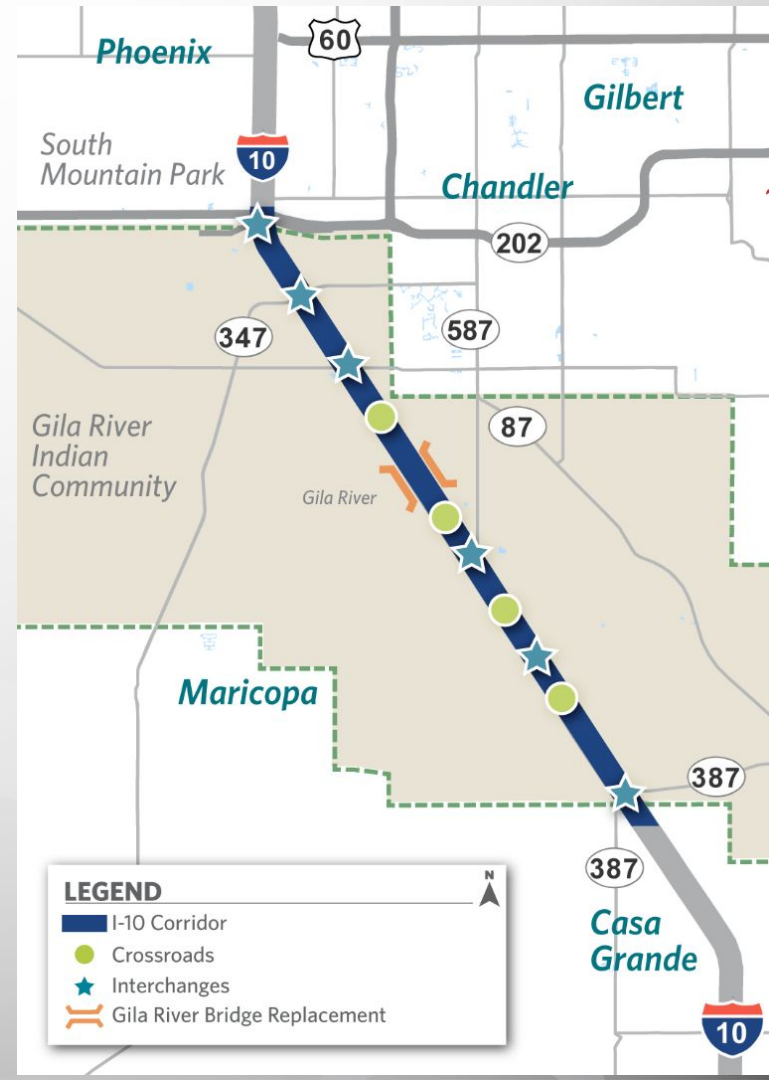
Environmental Assessment and Design Concept Report

Draft Environmental Assessment and Design Concept Report

August 19, 2022

I-10 Recommended Alternative

- I-10 median widening
- Reconstructed interchanges
 - Wild Horse Pass Blvd.
 - SR 347/Queen Creek Road
 - Riggs Road
 - SR 587/Casa Blanca Road
 - SR 387/SR 187/Pinal Ave.
- New Interchange
 - Seed Farm Road
- Upgraded crossroads
 - Goodyear Road
 - Nelson Road
 - Gasline Road
- Removed crossroad
 - Dirk Lay Road (returning easement)



Public Hearing Schedule

ADOT

Draft Environmental Assessment and Design Concept Report now available for review and comment: August 19 to October 9, 2022

Four Public Hearings Scheduled:

1. Sept. 7: Valley Christian High School (Chandler near the I-10/Loop 202 Interchange)
2. Sept. 13: Vista Grande High School (Casa Grande)
3. Sept. 15: The Community District 4 Service Center
4. Sept. 20: Virtual hearing



FY 2024 - 2028

Planning to Programming (P2P)

DISTRICT WORKSHOP SCHEDULE

- Northeast District: August 29 - 2:00 - 4:00pm
 - Southcentral District: August 30 - 9:00 - 11:00am
 - Northcentral District: August 30 - 2:00 - 4:00pm
 - Southwest District: August 31 - 1:00 - 3:00pm
 - Northwest District: September 6 - 1:00 - 3:00pm
 - Southeast District: September 7 - 1:00 - 3:00pm
 - Central District: September 13 - 1:00 - 3:00pm
-
- Note: All P2P District Workshops will be virtual

Questions