

# ARIZONA STATE TRANSPORTATION BOARD

## MULTIMODAL PLANNING DIVISION REPORT

May 19, 2023

Paul Patane  
Multimodal Planning Division

## Current Planning Activities

- Tribal Transportation Update
- City of Douglas International Port of Entry Connector Road Study
- SR88 Design Concept Report

# Tribal Transportation Updates

## Statewide Activities:

- **2023 Arizona Tribal Transportation Safety & Injury Prevention Summit**  
The Desert Willow Conference Center in Phoenix is the location for this event which will be held August 9-10, 2023. Attendance will be by invitation and the event capacity is limited to 125 persons. Summit speakers will include representatives from tribal governments as well as state and federal agencies.
- **Arizona Statewide Intelligent Transportation Systems Architecture Update & ADOT Statewide Truck Parking Plan – Tribal Outreach**  
ADOT-MPD is preparing to conduct tribal outreach for these projects. Tribes will be given the opportunity to provide input and participate. Generally the project scopes include: (1) Determine ITS technological service needs on the State Highway System; and (2) Analyze overall truck parking needs on the State Highway System and recommend projects.

# Tribal Transportation Updates

## Northern Arizona Region Activities:

- Meeting details are being coordinated to have a discussion on the ADOT Encroachment Permit process and the Navajo Nation Parks and Recreation granting of permits. This pertains to tour operators situated along SR 98 and SR 89, near Page, Arizona. Invited will be ADOT, Coconino County, Navajo Nation Parks and Recreation and LeChee Chapter Land Use Committee.

# Tribal Transportation Updates

## Southern Arizona Region Activities:

- **San Carlos Apache Healthcare Corporation – US70 Healthcare Facility Access**  
The SCAHC is requesting access to US70 for a new nursing healthcare facility on tribal land. SCAHC is coordinating with the ADOT Southeast District, San Carlos Police Department and San Carlos Apache Tribe DOT. Project construction plans, encroachment permit process, identification of crash data, speed reducing options and timelines are currently under discussion. A Traffic Impact Analysis Study is also under development for review by ADOT.
- **SR73 Road Safety Assessment - White Mountain Apache Tribe Coordination**  
On April 23rd, ADOT Traffic Safety conducted a SR73 RSA in Whiteriver, Arizona on the Fort Apache Reservation. The RSA focused on bicycle and pedestrian crash issues. The White Mountain Apache Tribe DOT was contacted to provide input into the RSA and a finalized report with the RSA findings is pending.

## F0534- Douglas IPOE Connector Road Study

**Notice to Proceed – January 4, 2023**

**Study Completion – On or Before December 23, 2024**

### **Project Overview:**

- Initial Traffic Report and Initial Drainage Report Submitted to ADOT for Comments
- Environmental Field Work – is in progress
- Public Meeting No. 1 – Held in Douglas on Thursday, April 27, 2023

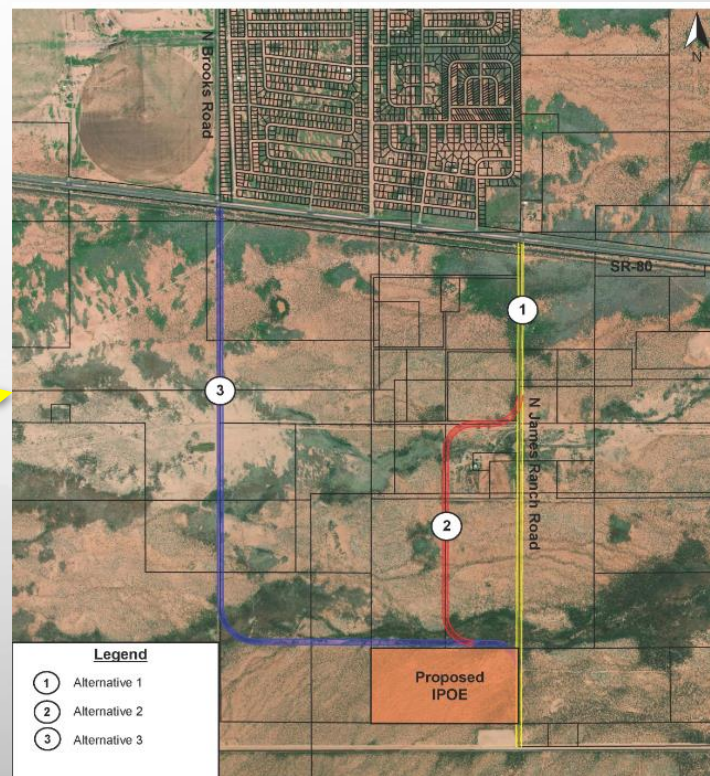
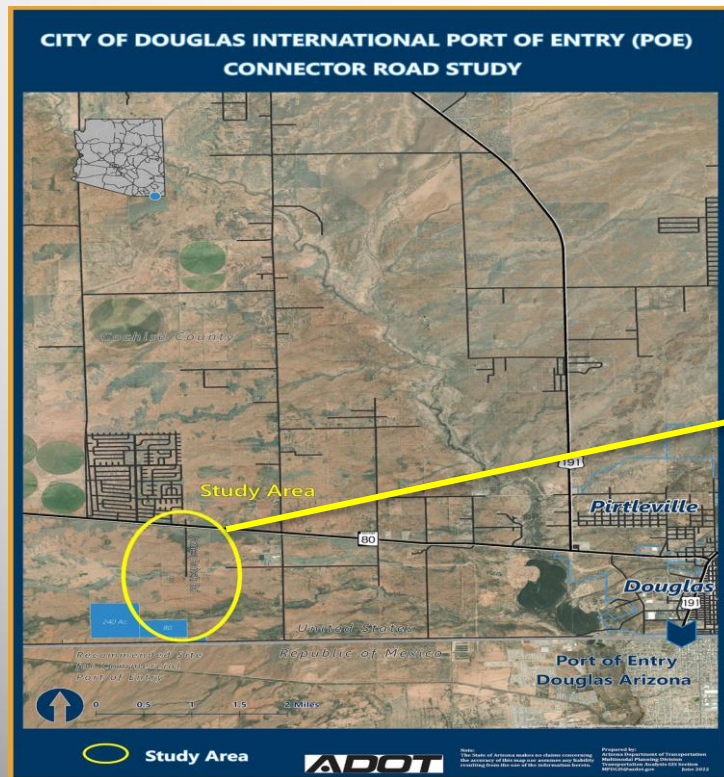
### **Next Milestones:**

- Development of Alignment Alternatives with Environmental Overview is due to ADOT on 6-9-2023
- Three Alternatives to be analyzed
- Next Public Meeting: Summer 2023

### **Project Issues:**

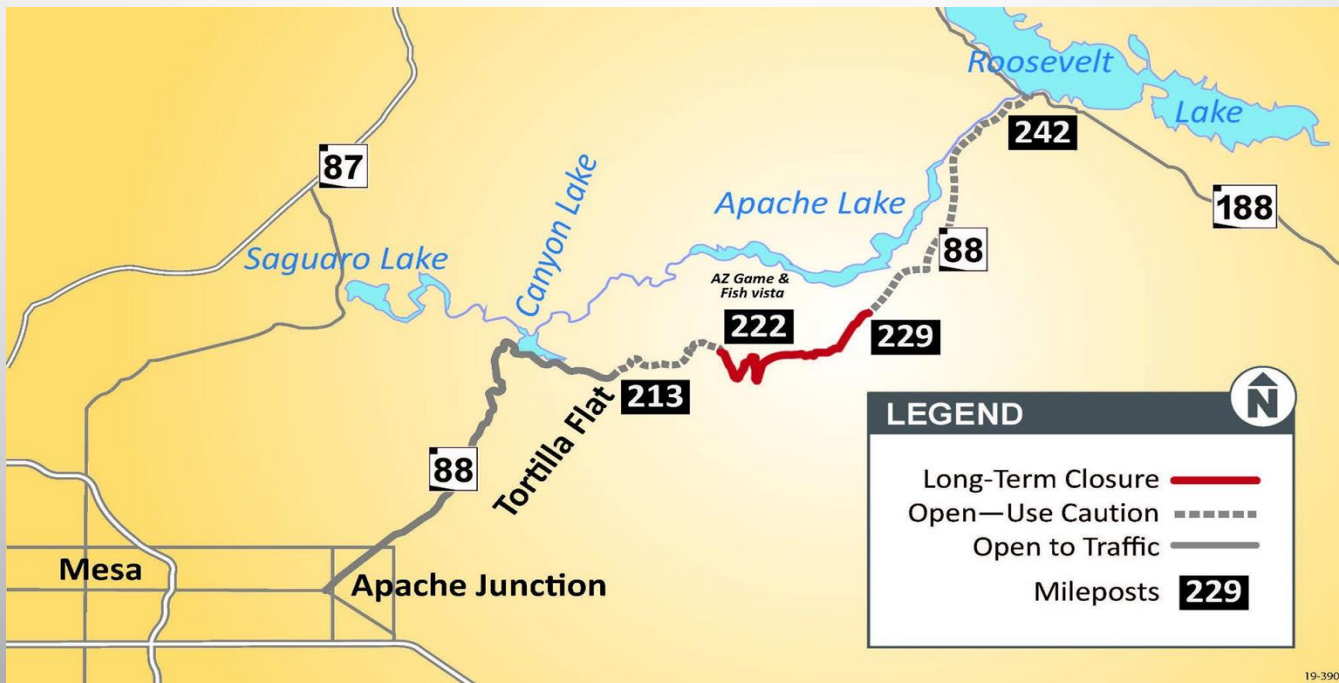
- Coordination with GSA for Design elements:
- If the new GSA Commercial POE will contain the State Truck Inspection Facility.
- Acquisition / Purchase of Right-of-Way for the Connector Road facilities.
- Project is not programmed for Design/Construction.

# Project Area map and Alternate options





# SR 88 (Apache Trail), Fish Creek Hill Overlook/Rest Area to Apache Lake Marina Road Study Area (7-mile segment)





# SR 88 DCR / EO Progress Chart

**May 2023  
We Are Here**

**Start DCR / EO**

**Field  
Visit**

**Criteria: Physical,  
Historical  
Environmental,  
Resilience**

**Alternatives  
Development,  
Evaluation &  
Costs**

**Recommend  
Alternative &  
Cost**

**Final  
Report**

ADOT



# Questions