

Project Modifications Items 6a - 6h

6b: Stwd Transfer Funds

6c: Stwd HSIP Project in
Current and Tentative
5 Year Program

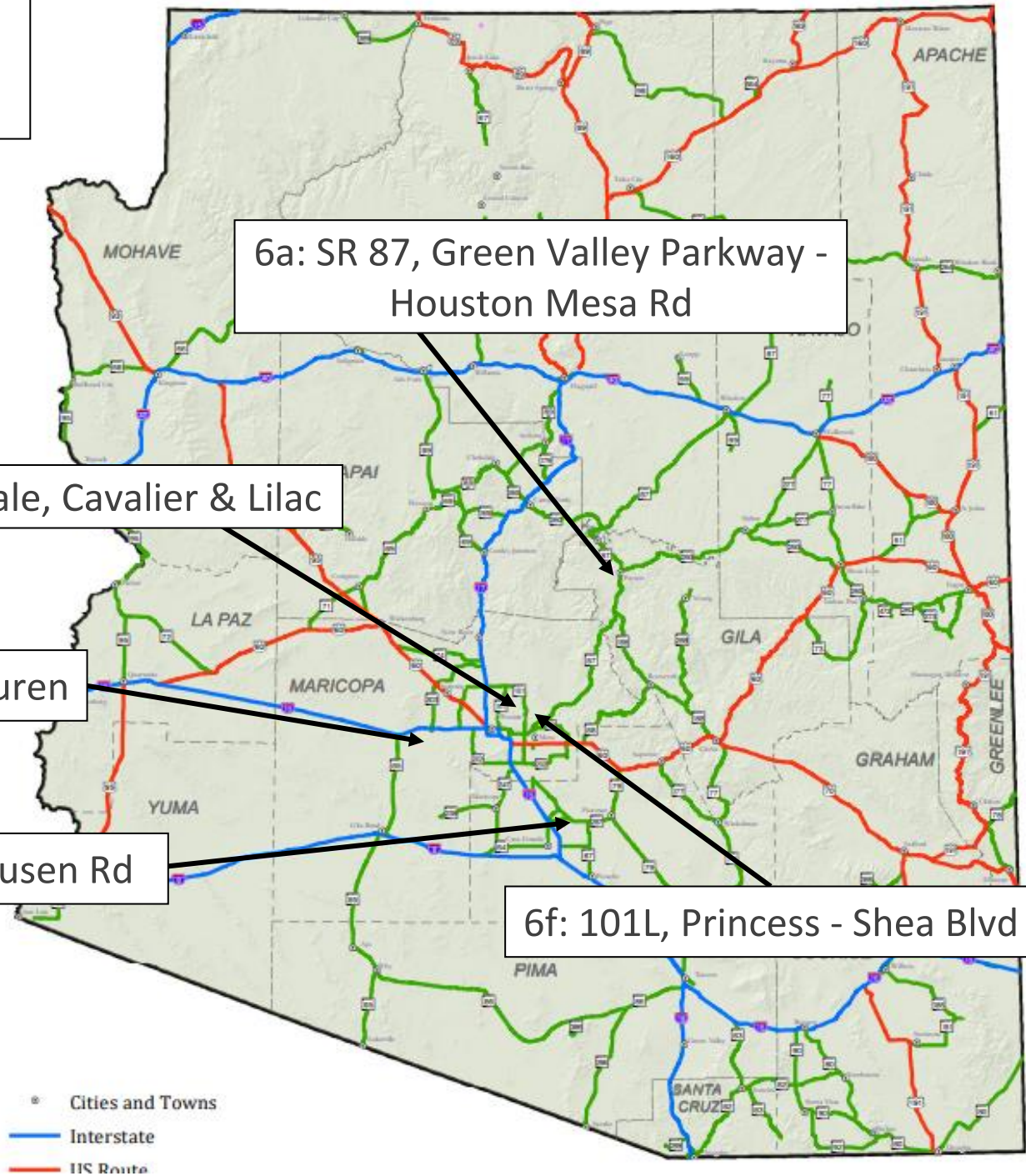
6e: Scottsdale, Cavalier & Lilac

6g & 6h: 303L, MC 85 - Van Buren

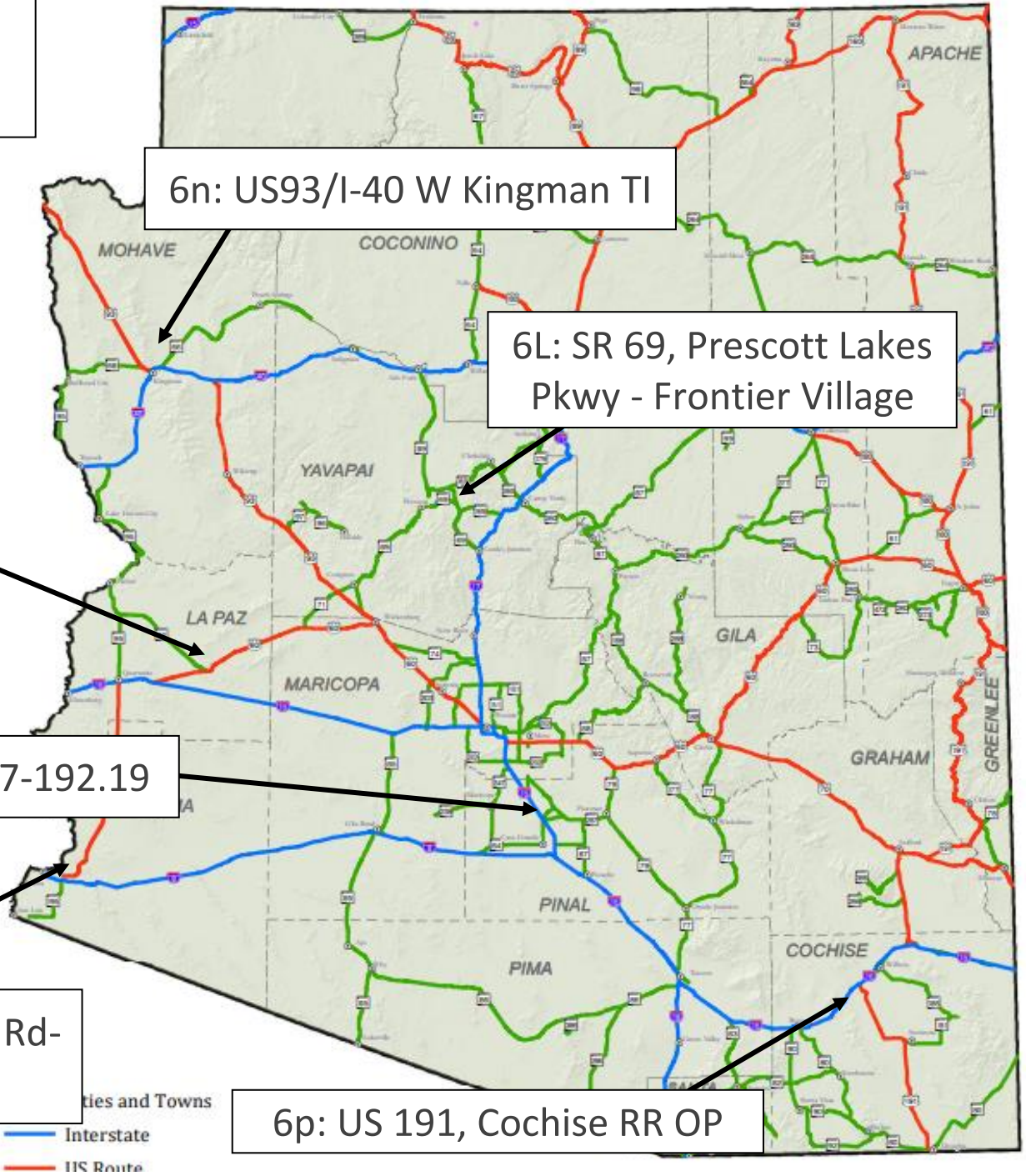
6d: SR 87 at Skousen Rd

6f: 101L, Princess - Shea Blvd

6a: SR 87, Green Valley Parkway -
Houston Mesa Rd



Project Modifications Items 6i - 6p



New Projects Items 6q - 6aa

6u: Various Locations-
Pavement
Preservation

6v: Stwd Traffic Ops Center-
Video Distribution Service

6t: US 93, E Oldeup Hillside -
N of Nothing

6z: SR 377, SR 277 - FSB

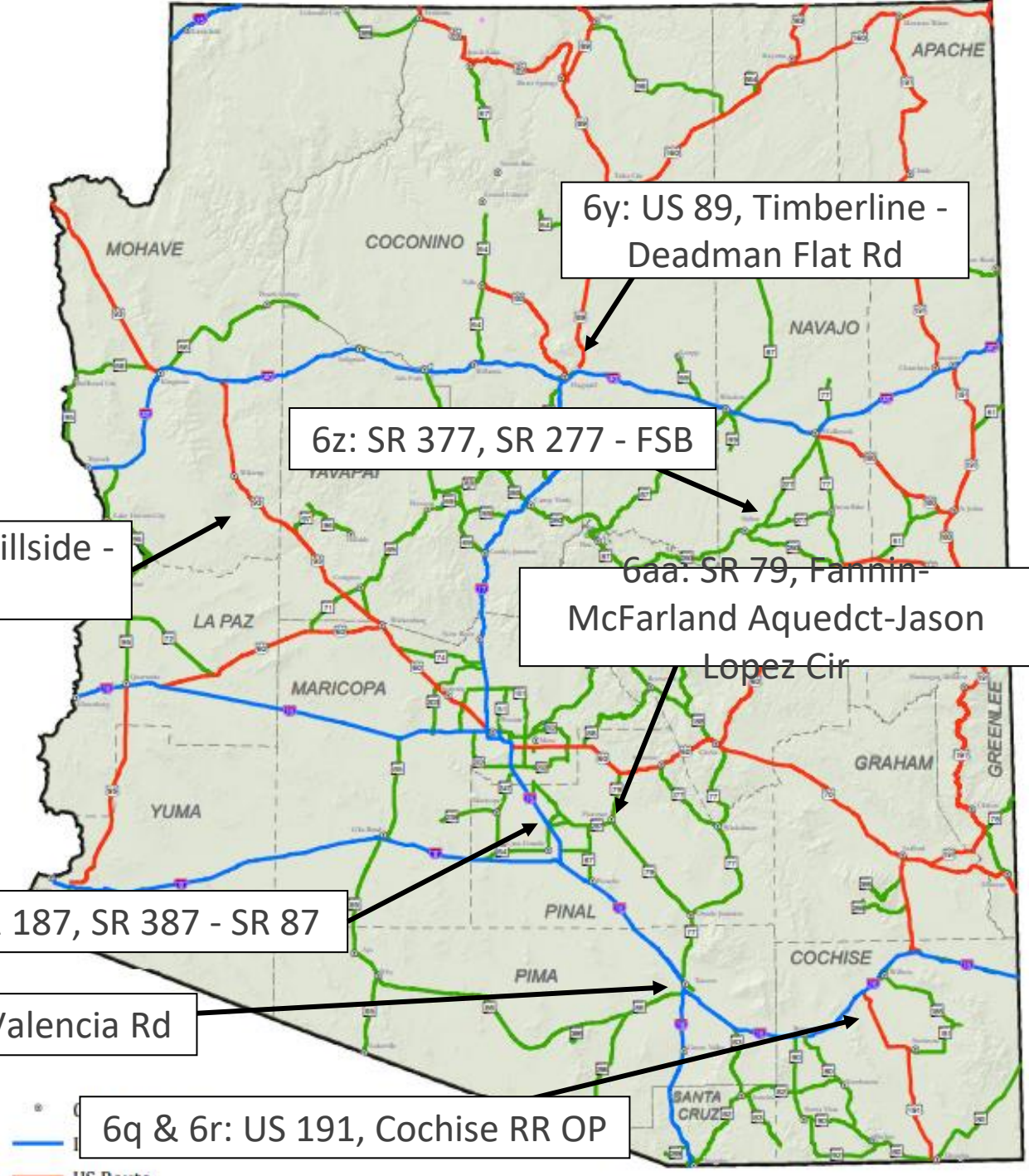
6aa: SR 79, Fannin-
McFarland Aqueduct-Jason
Lopez Cir

6s: SR 187, SR 387 - SR 87

6w & 6x: I-10, Alvernon Wy - Valencia Rd

6q & 6r: US 191, Cochise RR OP

6y: US 89, Timberline -
Deadman Flat Rd



●
— I-10
— US Route

New Projects Items 6ab - 6aL

6af: Active Transportation
Safety Action Plan (ATSAP)

6ag: US 93, Placeritas Creek -
Date Creek

6ai: Pinal Creek Bridge,
Cottonwood St #9711

6ab: SR 85, Gila Bend - Range 4

6ah: I-40, US 93 -
Silver Spring Rd

6ad: US 93, Gunsite
Canyon - Gray Wash

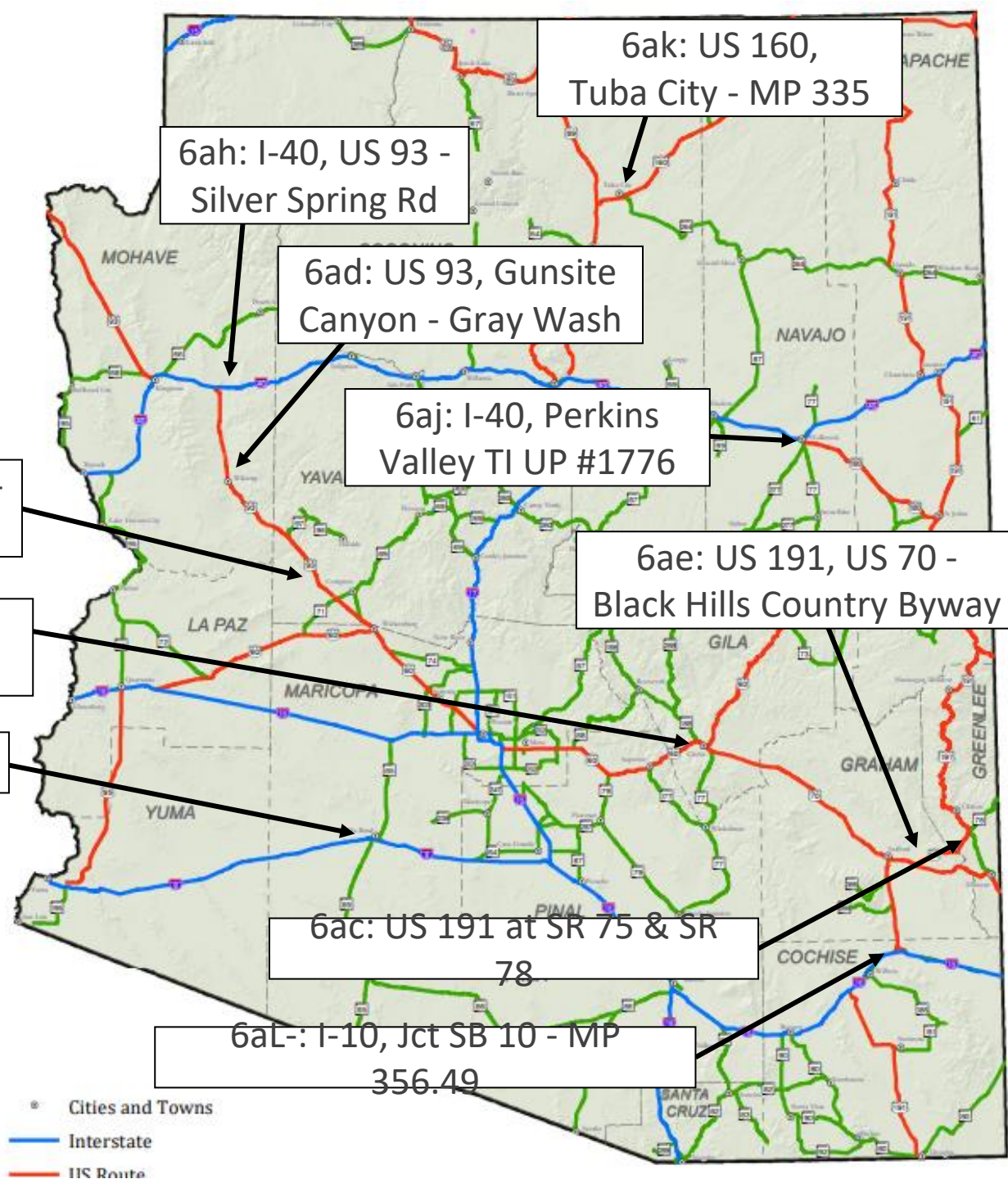
6aj: I-40, Perkins
Valley TI UP #1776

6ae: US 191, US 70 -
Black Hills Country Byway

6ac: US 191 at SR 75 & SR
78

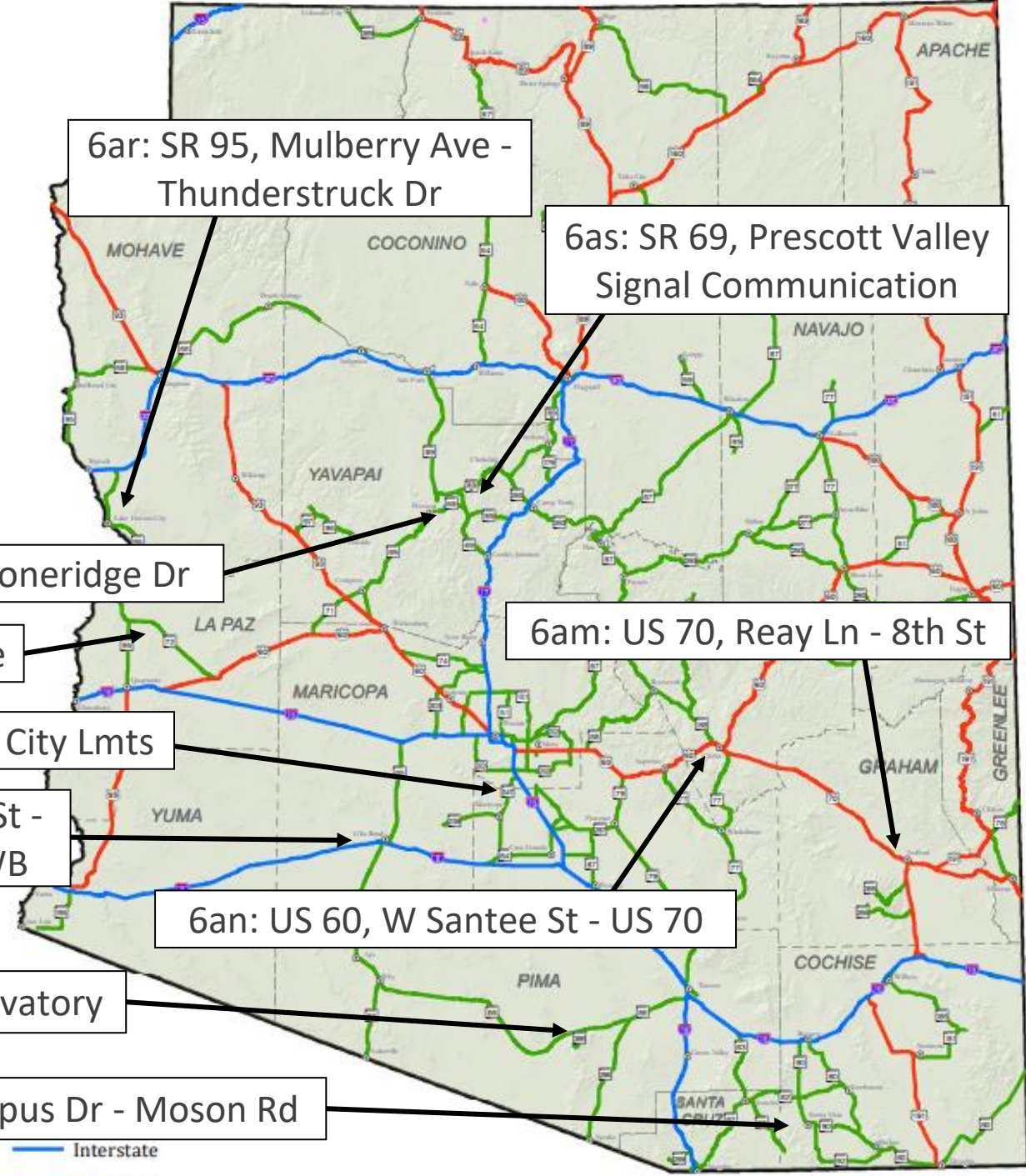
6aL: I-10, Jct SB 10 - MP
356.49

6ak: US 160,
Tuba City - MP 335



• Cities and Towns
— Interstate
— US Route

New Projects Items 6am - 6av



6ar: SR 95, Mulberry Ave -
Thunderstruck Dr

6as: SR 69, Prescott Valley
Signal Communication

6at: SR 69 at Stoneridge Dr

6au: SR 72, NW Bouse-SE Bouse

6am: US 70, Reay Ln - 8th St

6aq: SR 347, SR 238 - Maricopa City Lmts

6ao: 8B, Weidner St -
Old US Hwy 80, WB

6an: US 60, W Santee St - US 70

6av: SR 386, Kitt Peak Observatory

6ap: SR 90, Campus Dr - Moson Rd

— Interstate
— US Route