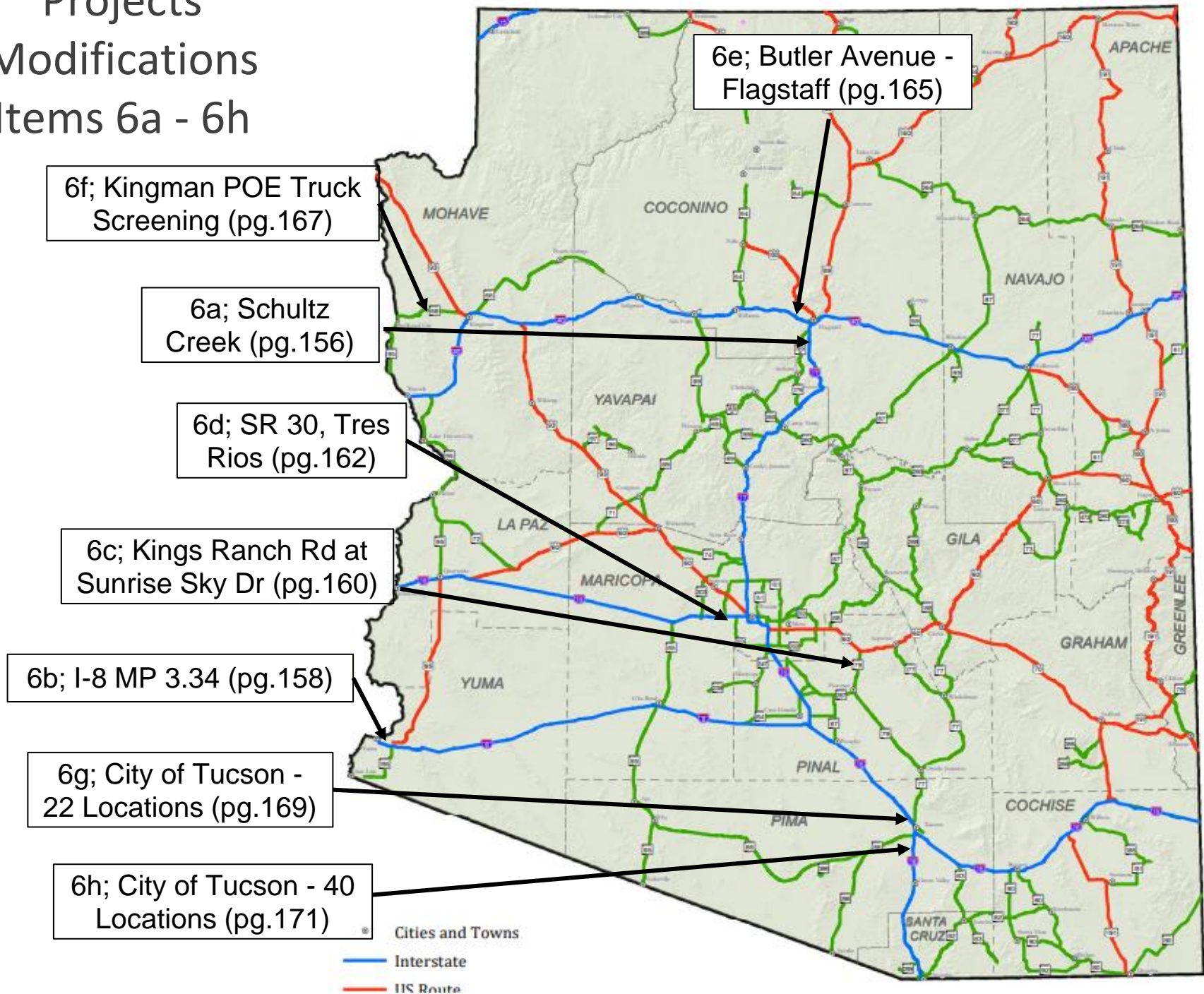
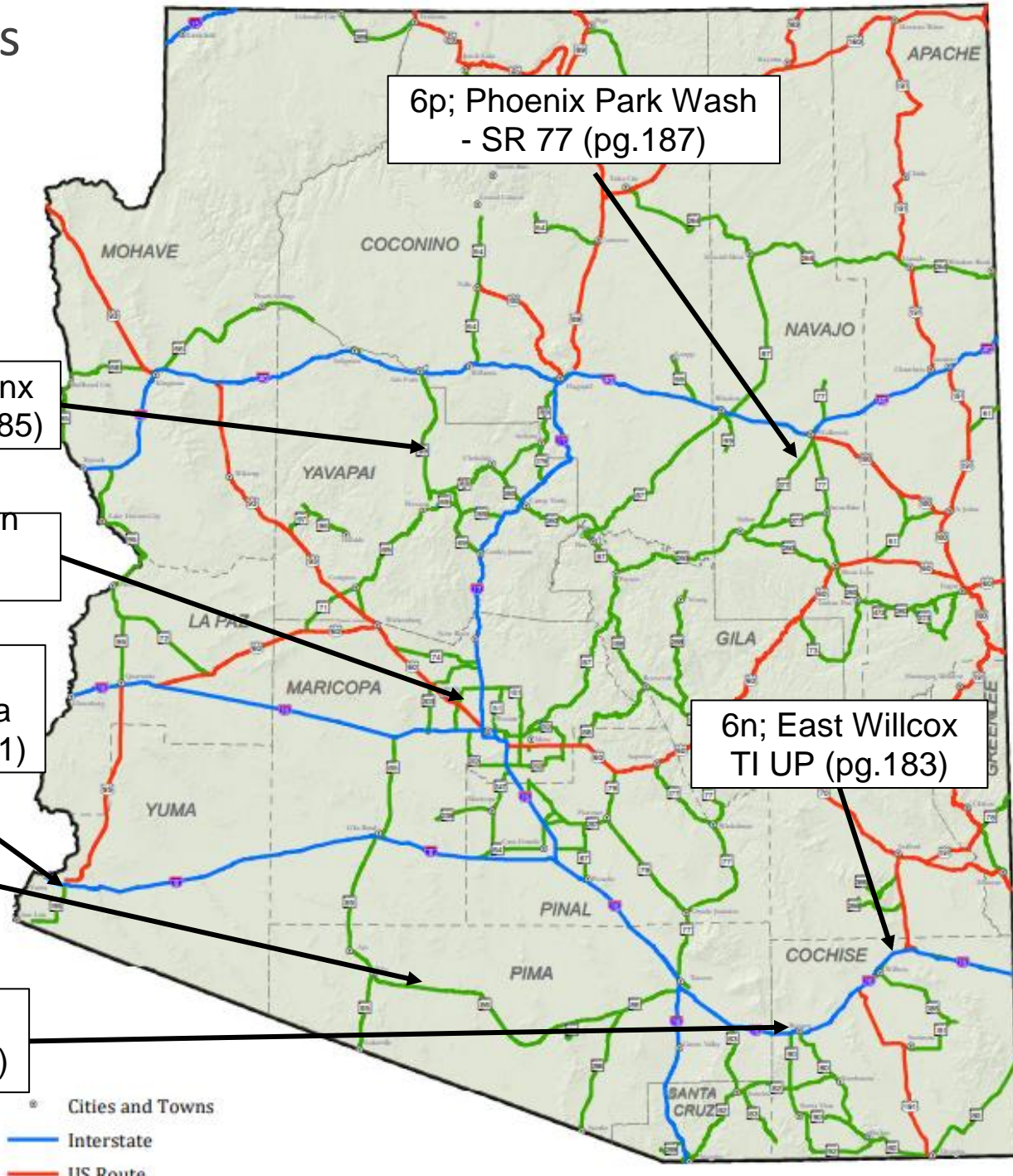


Projects Modifications Items 6a - 6h



Project Modifications

Items 6i - 6p



6i; NEVI Subprogram
(pg.173, Statewide)

6o; Robert Rd - Lynx
Creek Bridge (pg.185)

6j; Transwestern
Rd - I-17 TI
(pg.175)

6m; Page, San Simon,
Topock, Sanders, and Yuma
Ports of Entry (POEs) (pg.181)

6k; MP 80 - BIA 132
(pg.177)

6l; SR 90 - SR 80, WB,
West of Benson (pg.179)

6p; Phoenix Park Wash
- SR 77 (pg.187)

6n; East Willcox
TI UP (pg.183)

Project Modifications Items 6q - 6x

6w; Holy Moses Wash -
Rattlesnake Wash (pg.201)

6x; SR73/SR260
Intersection Lighting and
sidewalks (pg.203)

6s; Northern Avenue
Complete Streets (pg.193)

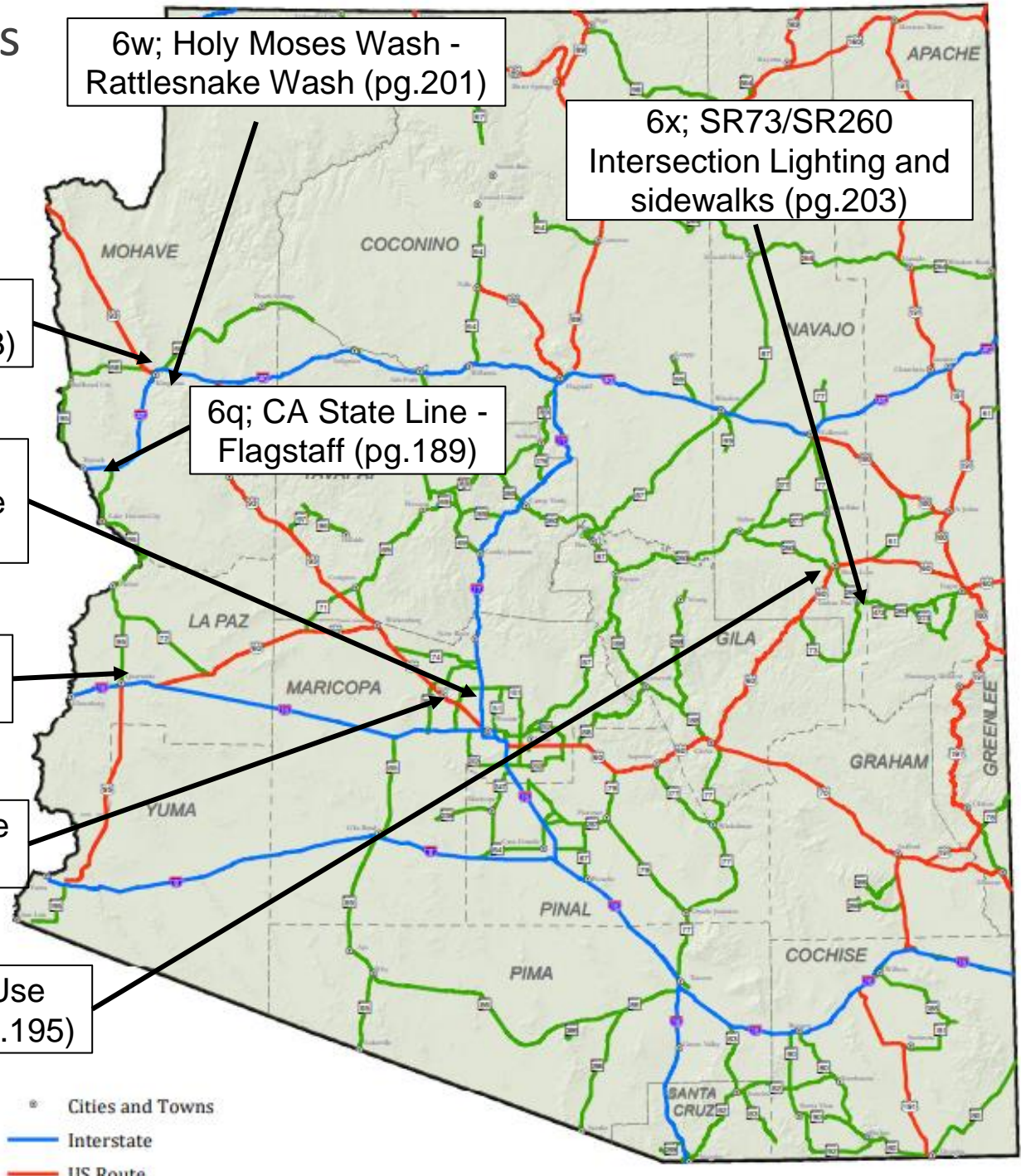
6q; CA State Line -
Flagstaff (pg.189)

6r; MAG Region
Landscape Maintenance
- FY24 (pg.191)

6u; Tyson St - N. Of
Quartzsite (pg.197)

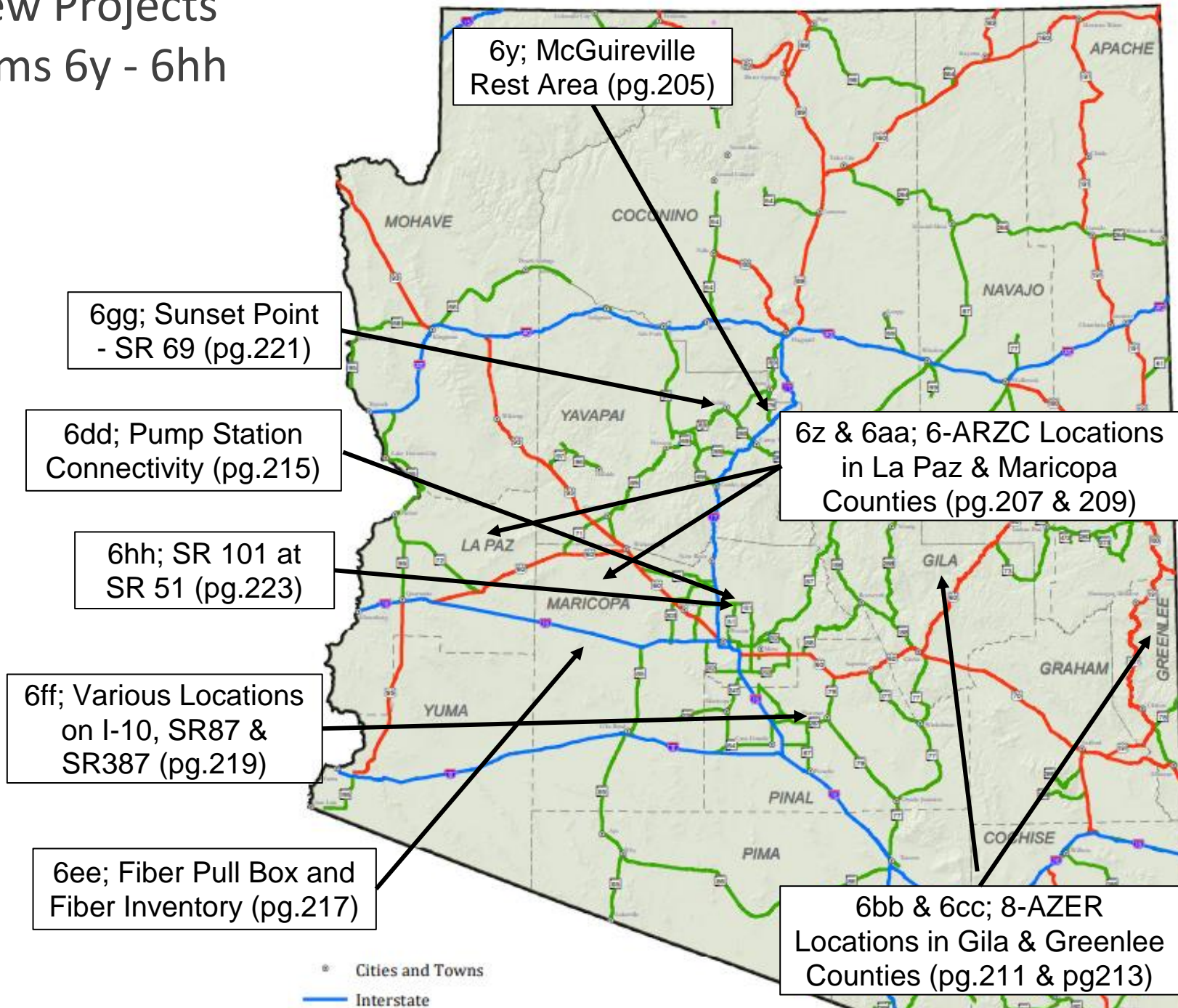
6v; 107th Ave & Rose
Garden Ln (pg.199)

6t; SR 260; Multi Use
Path, Show Low (pg.195)



• Cities and Towns
— Interstate
— US Route

New Projects Items 6y - 6hh



New Projects

Items 6ii - 6oo

6nn; Various Locations -
Statewide CCTV (pg.235)

6oo; 93; Cholla Canyon
Ranch Road - East
Oldeup Hillside (pg.237)

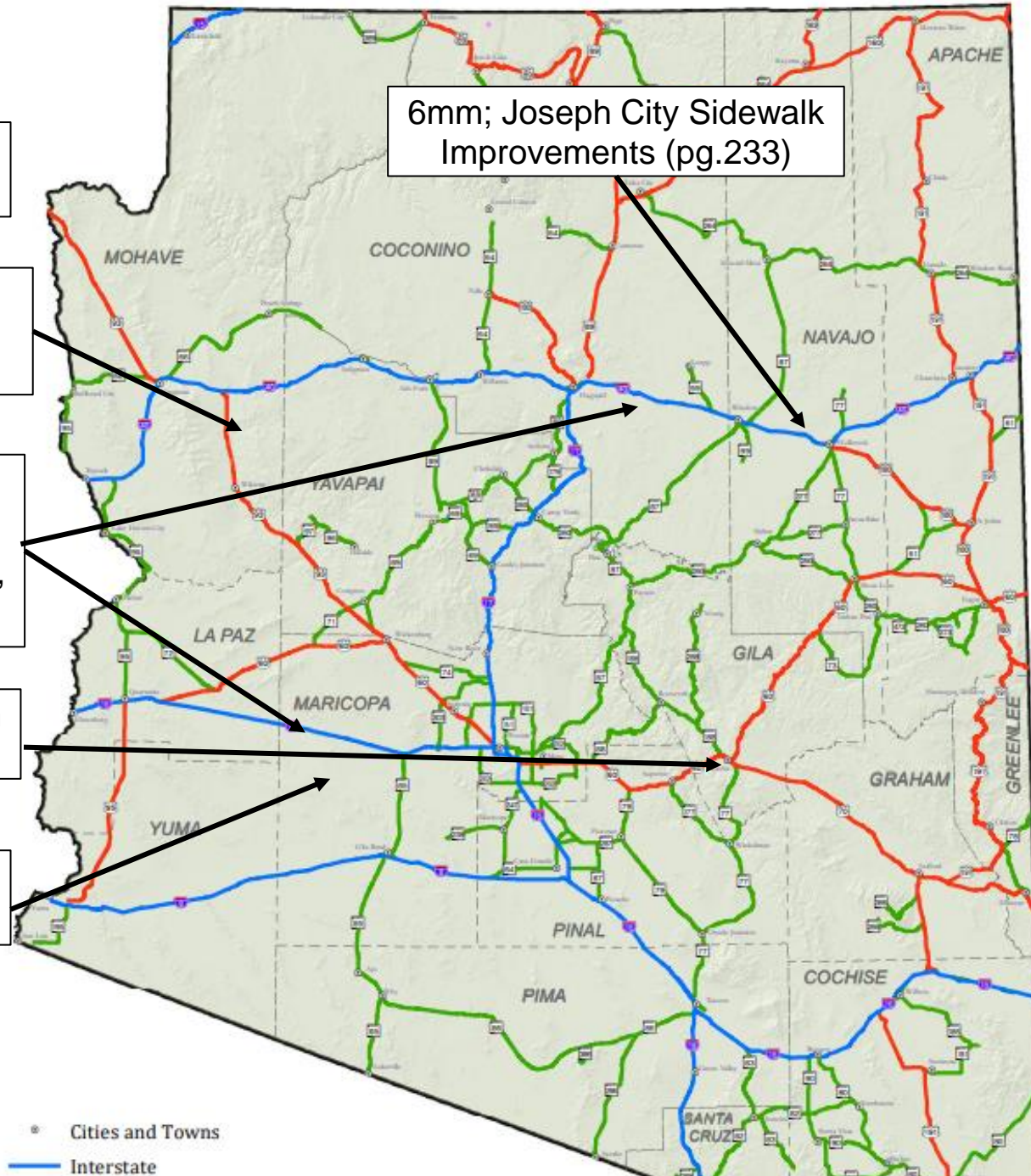
6ll; I-10, Burnt Well Rest
Area, MP 86, and I-40,
Meteor Crater Rest Area,
MP 235/236 (pg.231)

6jj; Cottonwood Wash
- Reay Ln (pg.227)

6ii; MAG Regionwide
CCTV Expansion (pg.225)

6kk; Various Locations -
Statewide CCTV (pg.229)

6mm; Joseph City Sidewalk
Improvements (pg.233)



New Projects

Items 6pp - 6vv

6ss; Markham Wash - Seligman TI EB (pg.245)

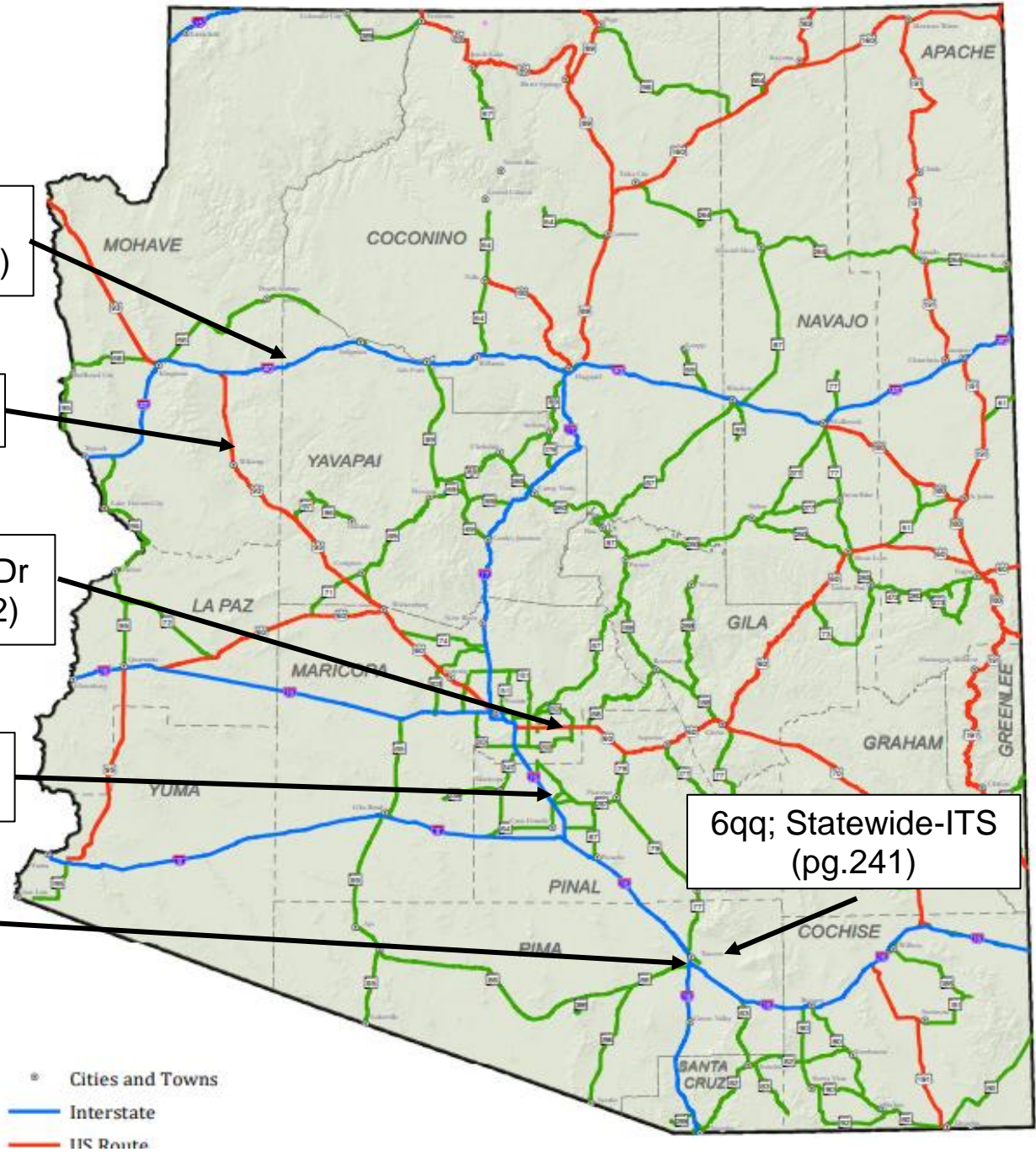
6pp; North of Signal Road (pg.239)

6vv; McClintock Dr - 48th St (pg.252)

6rr; SR 287/SR 87 (pg.243)

6uu; Prince Rd - I-19 TI (pg.250)

6qq; Statewide-ITS (pg.241)



* Cities and Towns
— Interstate
— HS Route

New Projects

Item 6tt

6tt; Off System Bridge projects (pg.247)

Selma Hwy at Casa Grande Canal Extension

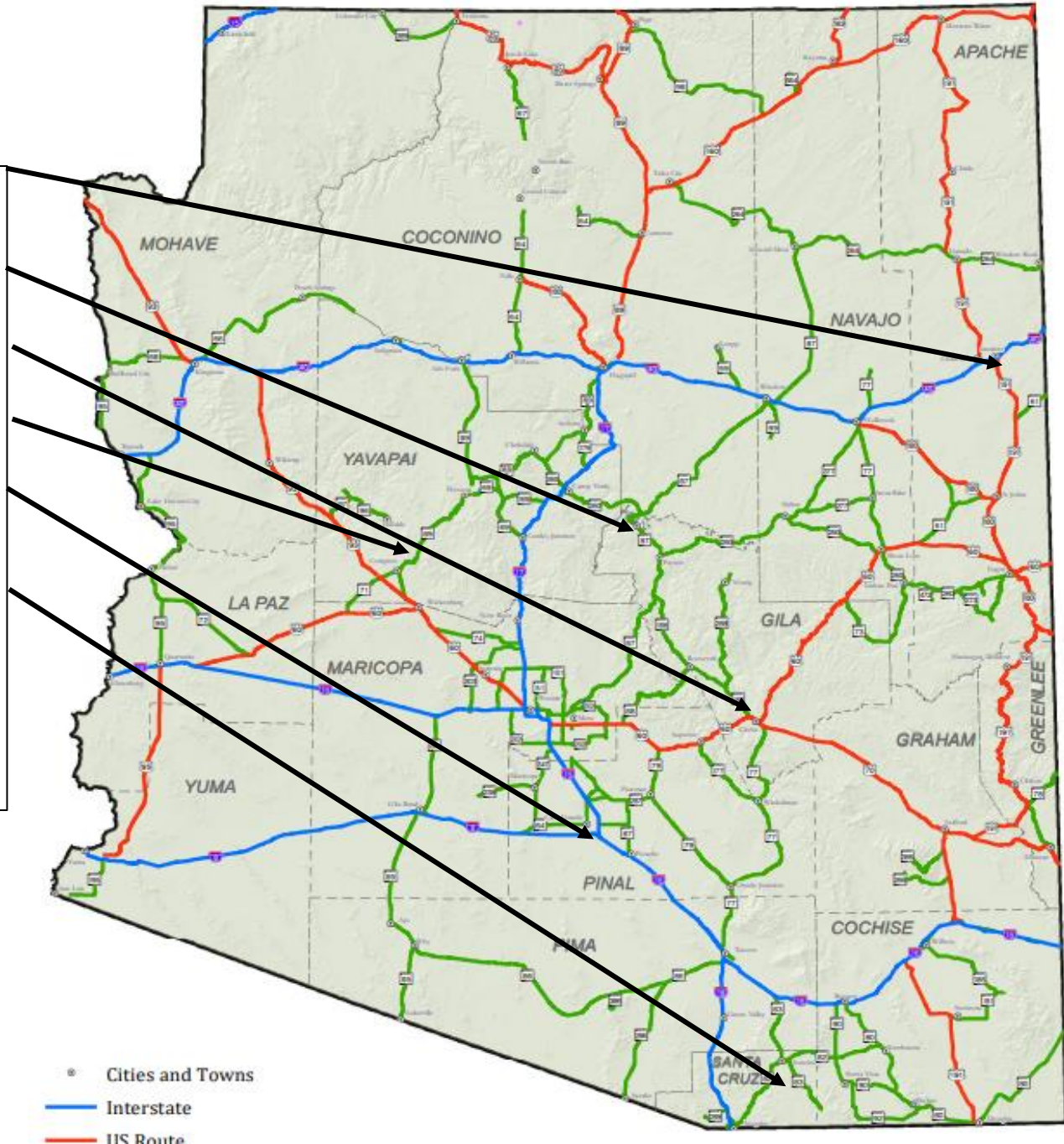
Crookton Rd at BNSF RR OP

Old US66/CR 7250 at Querino Canyon

Elgin Rd at Babocomari Creek

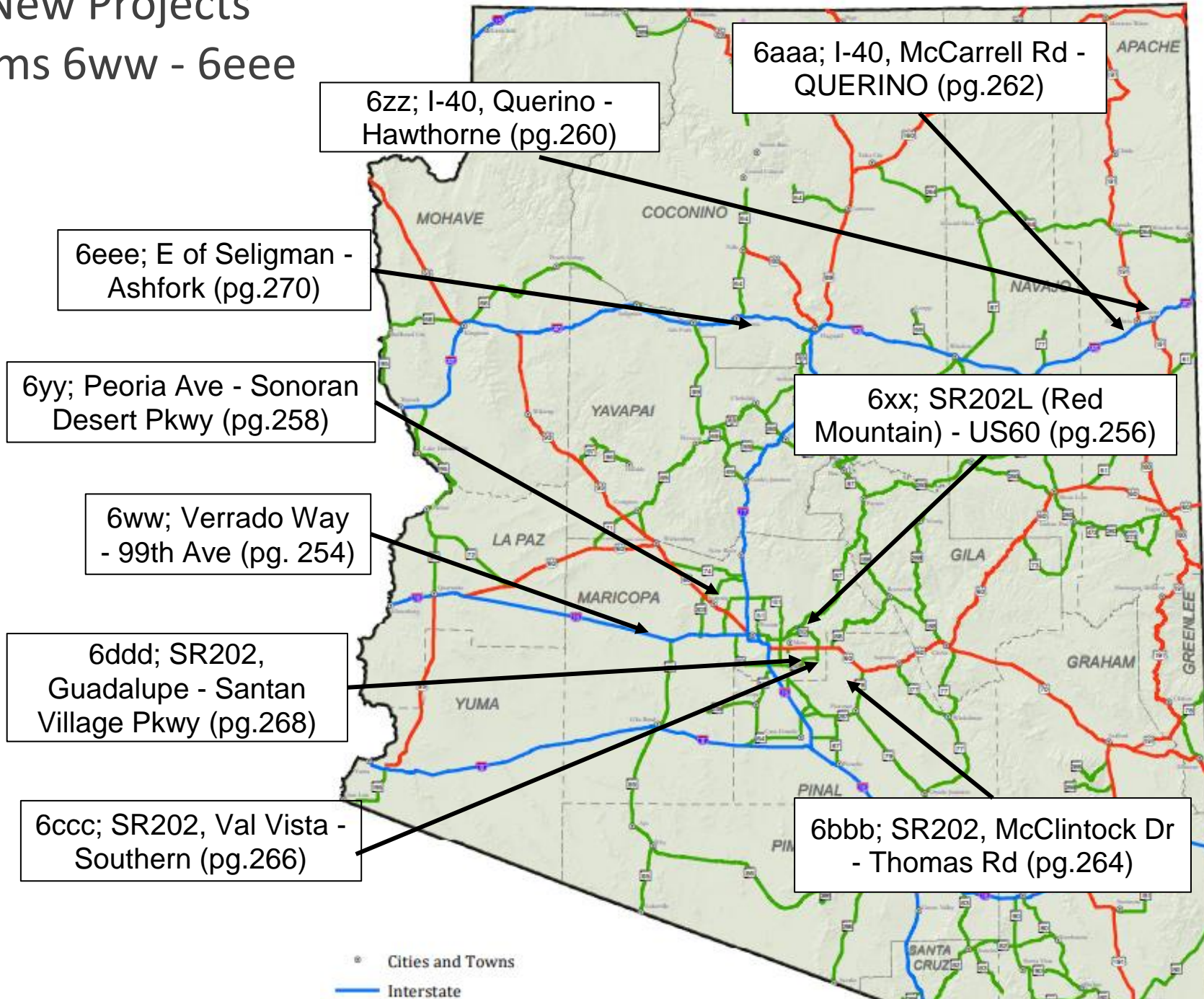
El Camino Viejo Rd at Sand Tanks Wash

Johnson Rd at Tonto Village

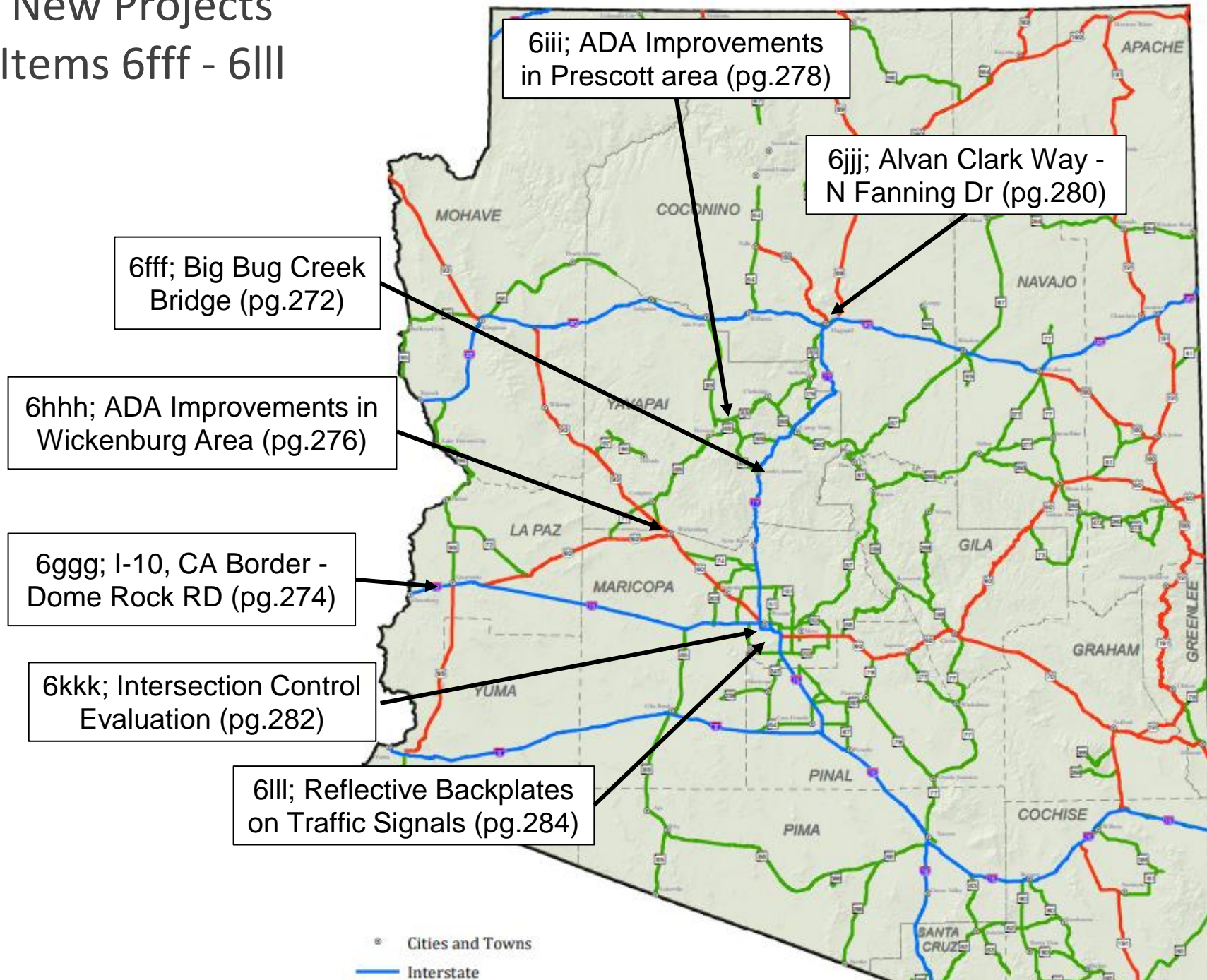


New Projects

Items 6ww - 6eee



New Projects Items 6fff - 6III



6mm; Grand Canyon National Park Airport (pg.286)

AIRPORT CLASSIFICATIONS

- CS-International
- CS-National
- Reliever
- GA-Community
- GA-Rural
- GA-Basic

CS = Commercial Service
GA = General Aviation

