

# Arizona State Transportation Board

Multimodal Planning Division Report

June 21, 2024

Paul Patane

Multimodal Planning Division

# Current Planning Activities

- Tribal Transportation
- Truck Parking

# Tribal Transportation Updates

## ADOT and Caltrans Peer-to-Peer Information Sharing - Tribal Partnerships and Trust Building Best Practices

- The ADOT Partnering Office recently received a collaboration request from the Hopi Tribe to meet with the California Department of Transportation (Caltrans).
- Caltrans is interested in building relationships with Tribes as this is an area in need of improvement for their state.
- A peer-to-peer information exchange meeting will be scheduled this summer to discuss ADOT's partnership efforts with the Hopi Tribe.
- Caltrans is also interested in best practices to enhance trust between Tribes, regional planning agencies and municipalities.
- Other areas of interest include transportation planning processes, communication practices, intergovernmental agreements, navigating sovereign immunity and accountability in project implementation.

# Tribal Transportation Updates



## ADOT and Michigan DOT Peer-to-Peer Information Sharing - Practices in Tribal Transit

- The ADOT MPD Transit Program recently received a request from the FHWA Office of Tribal Transportation to meet with the Michigan DOT Transit Program.
- The Michigan DOT is specifically interested to learn about ADOT's working relationships with Tribes in Tribal transit and would like to find the easiest way to get transit funds to Tribes.
- A peer-to-peer meeting is scheduled for July 18th to discuss waiver of sovereign immunity barriers, tribal grant agreements, and federal transit fund transfers to tribal governments.

# Tribal Transportation Updates



## Bicycle Safety and Bicycle Safety Certification Training

- Elaine Mariolle, ADOT Active Transportation Coordinator, facilitated a 20-hour League Cycling Instructor Certification training seminar on May 17-19. The seminar was hosted by the Pascua Yaqui Tribe at the Pascua Pueblo in Tucson.
- Among the participants were the principal of Lawrence Intermediate School, teachers, instructors from the Tohono O'odham San Xavier recreation center, an instructor from the Pascua community in Guadalupe, wellness instructors, community leaders, and FUGA (Familias Unidas Ganando Accesibilidad).
- The LCI training seminar focuses on teaching and demonstration techniques when instructing a Smart Cycling class. The seminar emphasis is on how to teach bicycle safety skills for new and returning bicyclists and youth. Candidates get hands-on experience to practice facilitating parts of the curriculum, both in the classroom and on-bike.

# Tribal Transportation Updates



## **FY24 Safe Streets and Roads for All (SS4A) - Tribal Award**

On May 17th the USDOT announced nearly \$64 million in SS4A grants nationwide for FY24. Six grants were awarded in AZ including the following tribal award:

### **Salt River Pima-Maricopa Indian Community**

Awarded Funding: \$200,000

Scope: Update the SRP-MIC 2019 Tribal Transportation Safety Plan to meet the requirements of a SS4A comprehensive safety action plan.

## **ADOT-Tribal Upcoming Meetings**

7/1/2024 – Tohono O’odham Nation Strategic Transportation Safety Plan Stakeholders Meeting

8/1/2024 - Navajo Nation/ADOT Transportation Partnership Meeting  
(Tentative)

8/15/2024 - San Carlos Apache Tribe/ADOT Transportation Partnership Meeting

# Truck Parking Update

# Truck Parking Update

- **Background/History:**
  - **2017 - State Freight Plan:** \$10 million set aside for statewide truck parking, based on recommendation of the Freight Advisory Committee (FAC). A Truck Parking Study was conducted to help program the \$10 million.
  - **2019 - Truck Parking Study:** Projects identified, prioritized, and subsequently built utilizing the \$10 million: 120 new spaces overall for 5 rest areas - Meteor Crater (58); Haviland (38); Bouse Wash (16); Sentinel (4); Sunset Point (4).



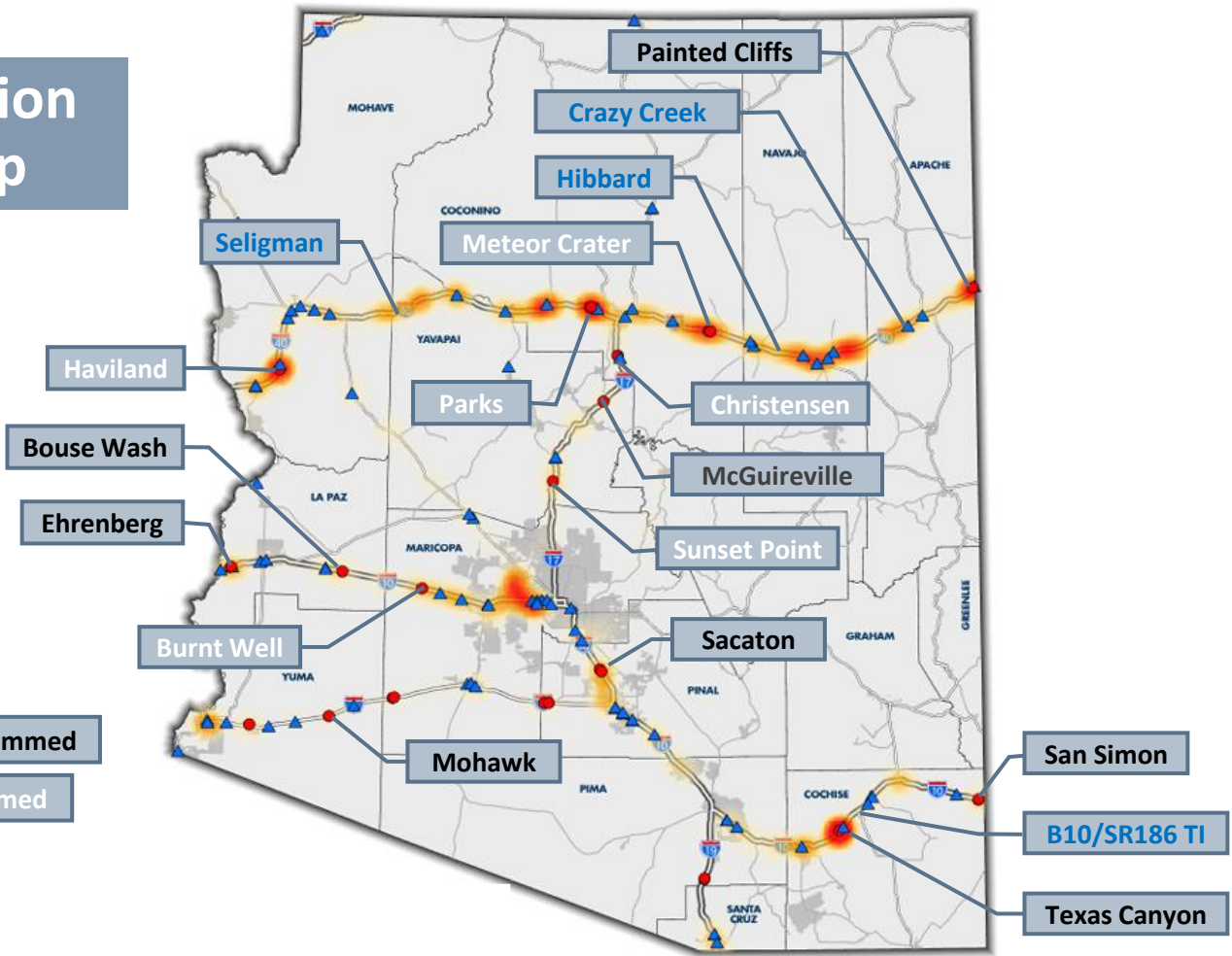
# Truck Parking Update

- **Background/History (Continued):**
  - **2022 - State Freight Plan Update:** \$50 million (of the \$125 million in National Highway Freight Program funds available for all freight-related purposes) were designated for statewide truck parking, based largely on the recommendation of the Freight Advisory Committee.
  - **2023 - Rest Area Study:** In-depth look at truck parking needs at rest areas (further development of projects identified in the 2019 Truck Parking Study and 2022 Freight Plan. Information applied to a new **Truck Parking Plan**).

# Truck Parking Update

- **Background/History (Continued):**
  - **2023 - Truck Parking Plan:** Conducted to program the \$50 M set aside in the 2022 Freight Plan. Recommendations included:
    - Added spaces in four rest areas on I-40 & I-17 (under development)
    - Burnt Well Rest Area expansion (under development)
    - Meteor Crater Rest Area expansion (under development)
    - A Truck Parking Safe Lot at I-10 Exit 336 - B10/SR186 TI (alternatives are under consideration)

# Location Map



**Legend:**

- Rest Areas - unprogrammed
- Rest Areas - programmed
- Safe Lots

**Undesignated Truck Parking Density**

	High		Private Truck Parking
	Low		Public Truck Parking

# Truck Parking Update



## Currently Programmed (in thousands)

Project	FY 2024	FY 2025	FY 2026	TOTAL
I-40/I-17 Four Rest Areas	\$18,000			\$18,000
I-10, Burnt Well Rest Area & I-40, Meteor Crater Rest Area	\$1,000 Design	2,500 ROW	16,500 CN	\$20,000
<b>Total Programmed</b>				<b>\$38,000</b>
Sub-Program Remaining *				\$12,000

\* Potentially to cover cost increases, Safe Lot project or alternative

# Truck Parking Update

## Project: I-40/I-17 Rest Area Truck Parking Expansion

Locations: Four rest areas, seven sites:

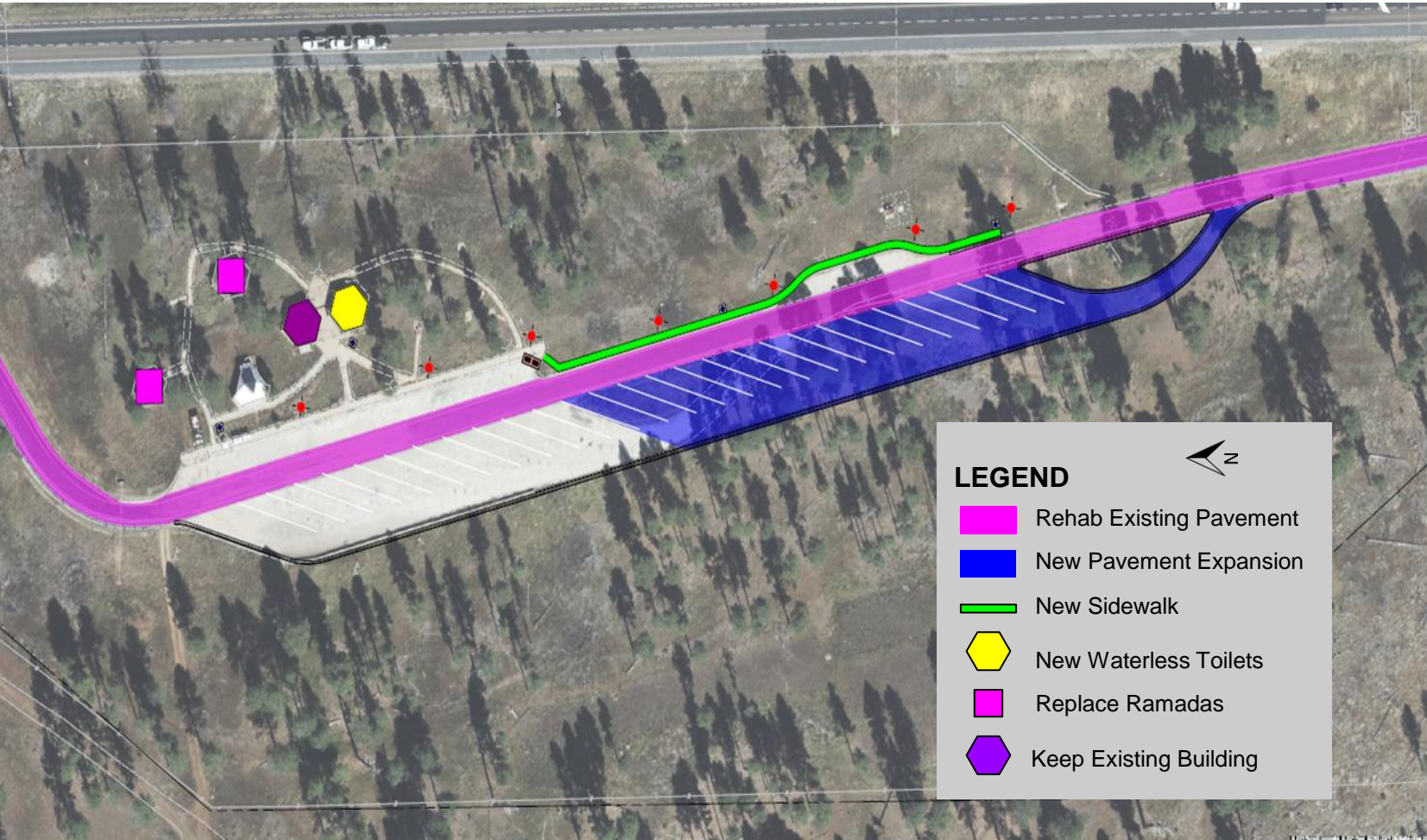
- Sunset Point, SB I-17 (one site serves both directions), 50 miles N of Phx
- Christensen, NB & SB I-17, 20 miles S of Flagstaff
- Parks, EB & WB I-40, 14 miles W of Flagstaff
- Haviland, EB & WB I-40, 30 miles S of Kingman

Delivery Method: Integrated Design-Build, provides a platform for ADOT, designers, and contractors to collaborate during project development. Encourages the exchange of ideas for more efficient design and construction, and use of innovative materials and products.

Status: Construction expected to begin summer 2024

# Christensen I-17 SB

ADOT



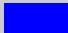

### LEGEND

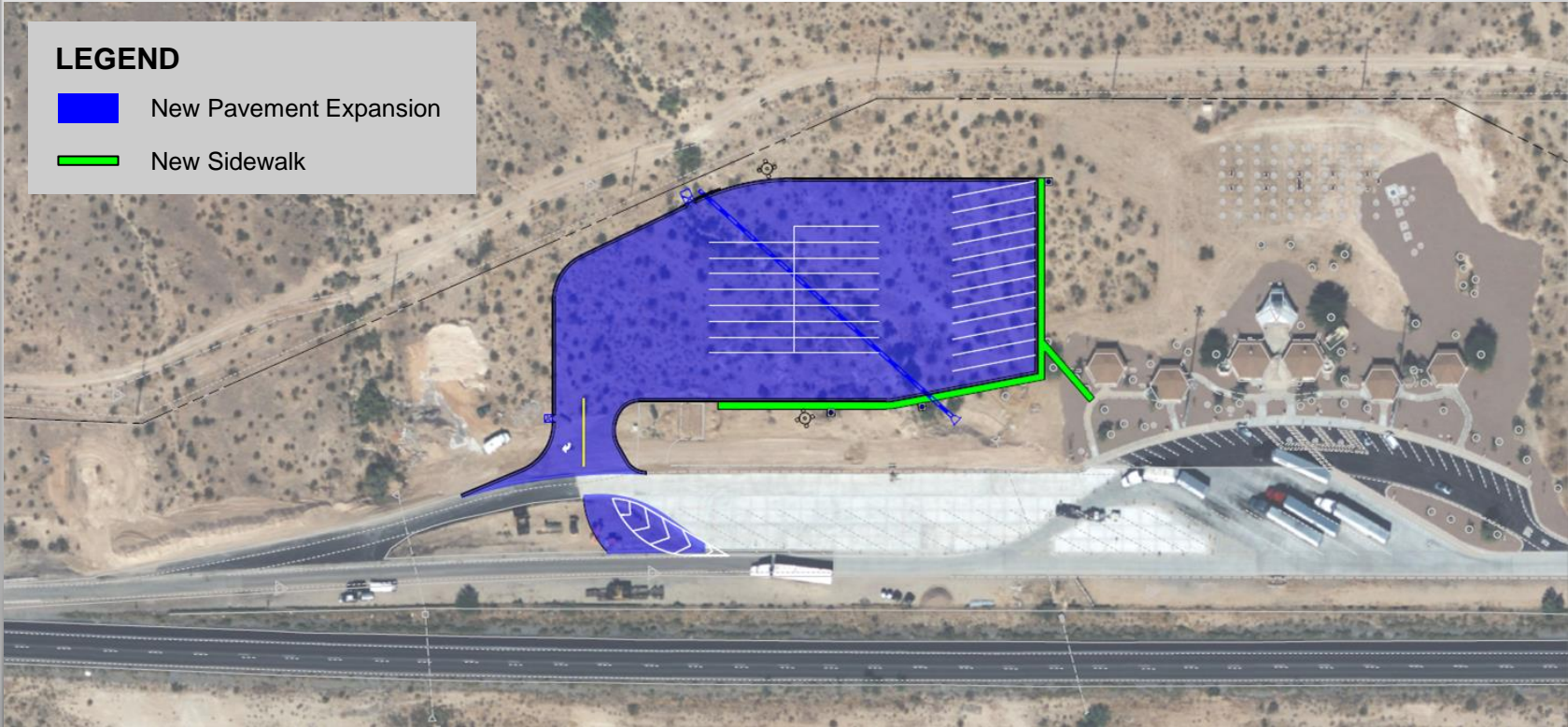


-  Rehab Existing Pavement
-  New Pavement Expansion
-  New Sidewalk
-  New Waterless Toilets
-  Replace Ramadas
-  Keep Existing Building

# Haviland I-40 WB

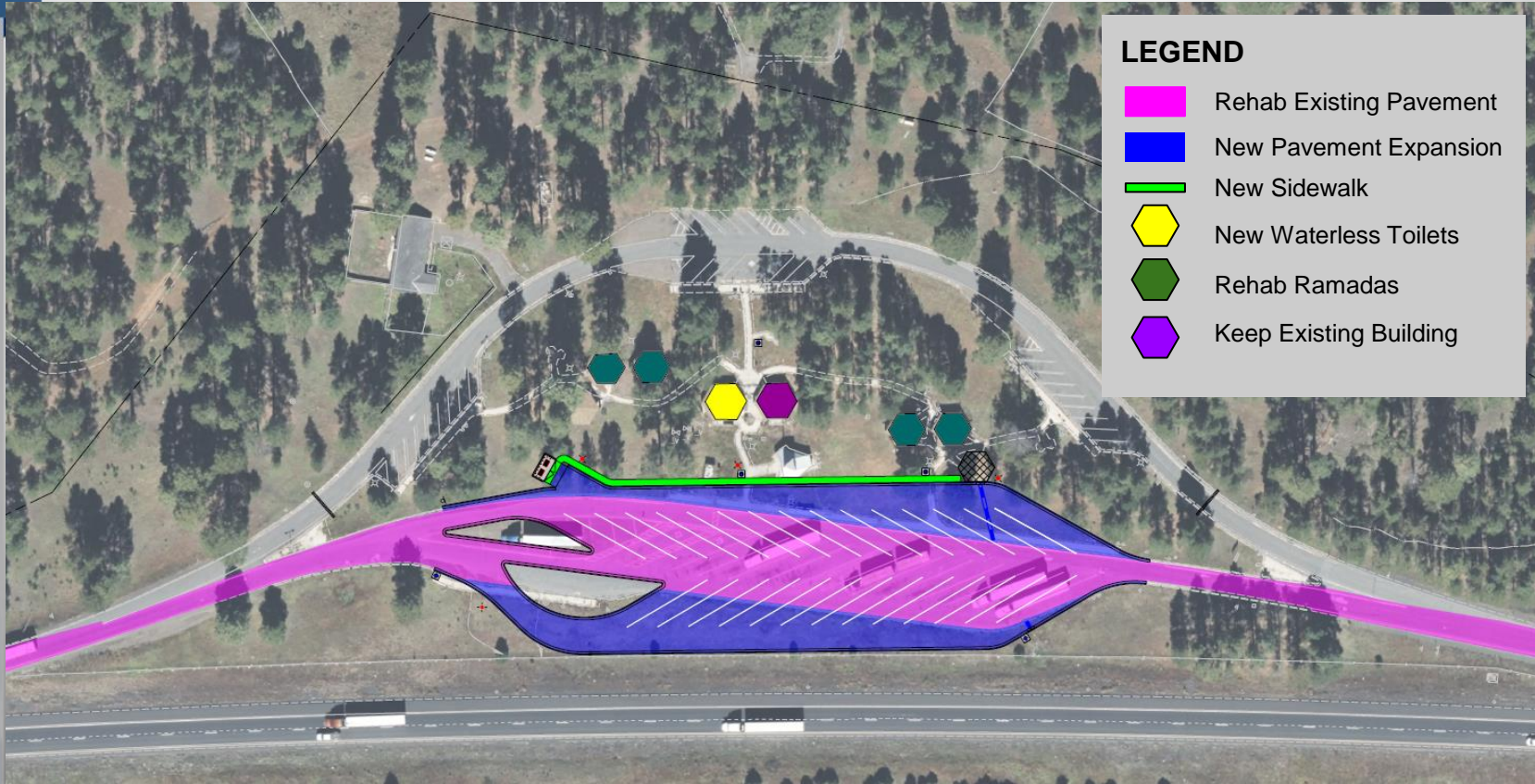
**LEGEND**

-  New Pavement Expansion
-  New Sidewalk



# Parks I-40 WB

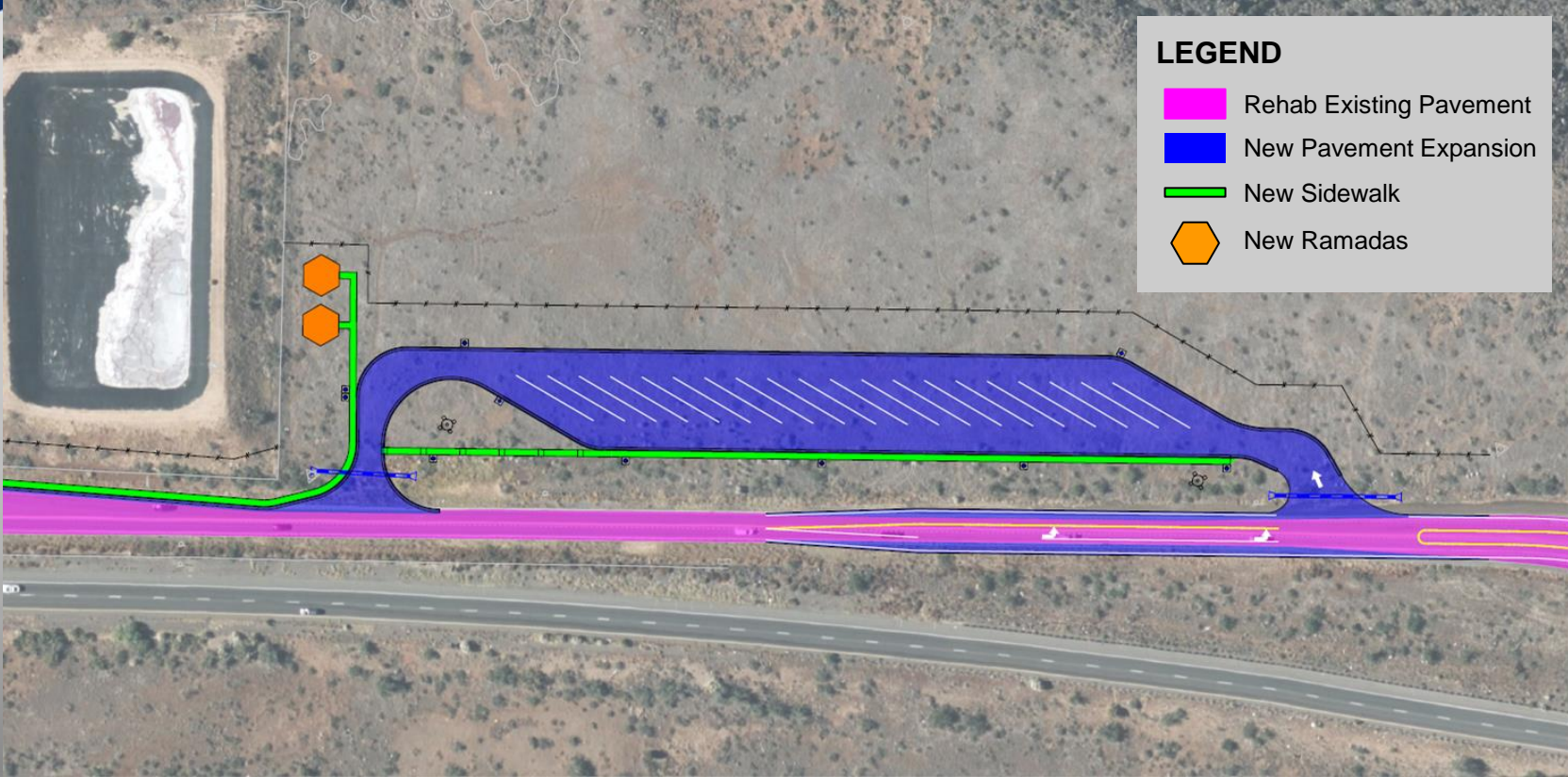
ADOT





# Sunset Point I-17 SB

**ADOT**



# Truck Parking Update

**ADOT**

## **Project: Burnt Well Rest Area Truck Parking Expansion**

Location: Along I-10, approximately 90 miles west of Phoenix Metro Area

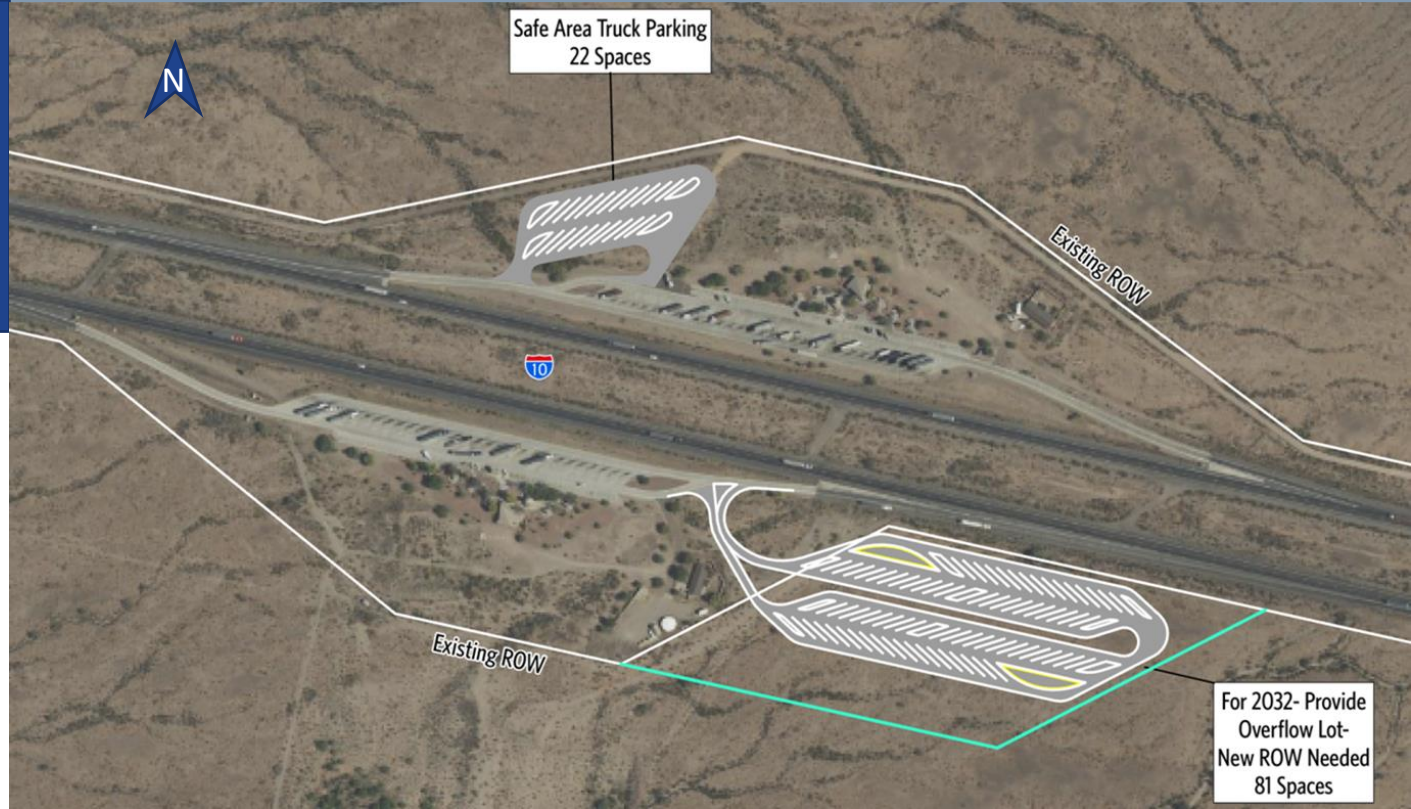
Delivery Method: Alternative Delivery

Status: The project has been initiated, with Environmental investigations starting in July 2024. This project will require additional ROW.

# Burnt Well Rest Area

**Burnt Well, I-10 MP 86**  
*EB - 81 Potential Spaces*  
*WB - 22 Potential Spaces*

**Total Cost \$ 9.25 M**  
*Cost includes ROW*



# Truck Parking Update

**ADOT**

## **Project: Meteor Crater Rest Area Truck Parking Expansion**

Location: Along I-40, approximately 45 miles east of Flagstaff

Delivery Method: Alternative Delivery

Status: The project has been initiated, with Environmental investigations starting in July 2024. This project will require additional ROW from Tribal Land.

# Meteor Crater Rest Area

**Meteor Carter Rest  
Area, I-40, MP 235**

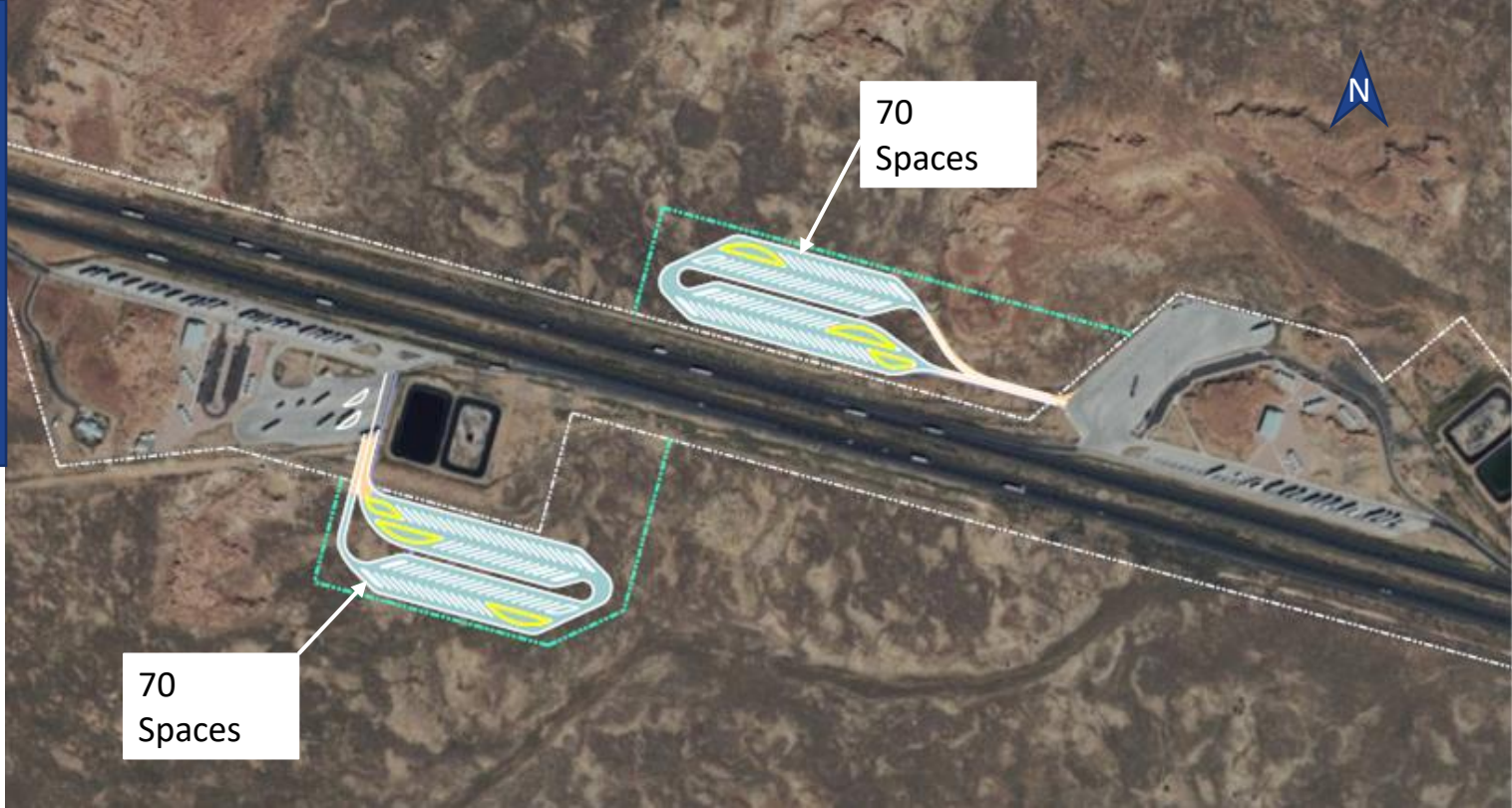
*EB - 70 Spaces*

*WB - 70 Spaces*

*ROW – 25 acres Total  
both directions*

**Total Cost: \$ 10.75 M**

*Cost includes ROW*

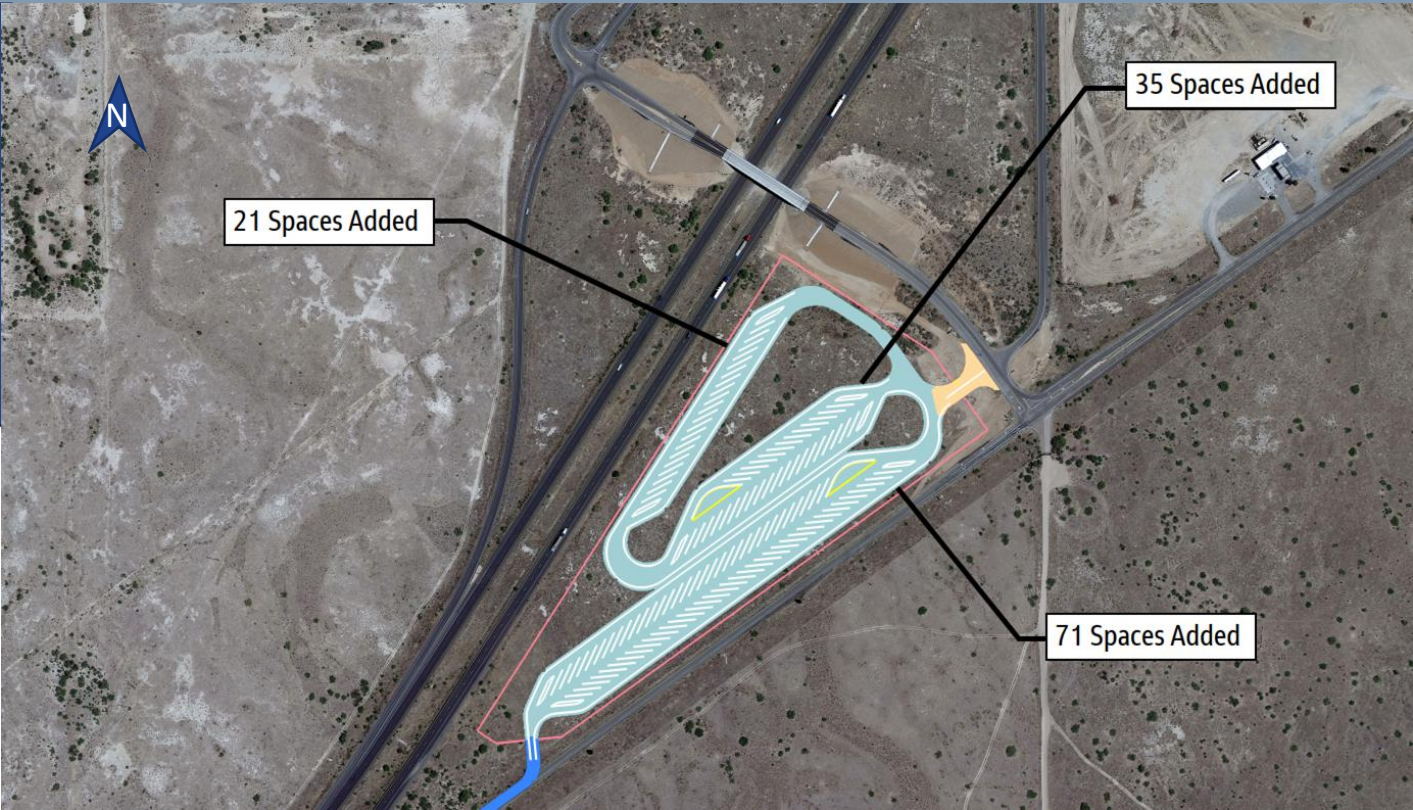


# Potential Truck Parking Partnership with City of Willcox

- ADOT has met with City of Willcox officials to discuss the city's concerns with ADOT's original proposal for a new safe truck parking lot west of Willcox.
  - The City has concerns on sales generated by businesses along the I-10 Corridor, with truck stops being a vital component of the economic landscape.
  - The City is interested in working collaboratively with ADOT to find a solution that benefits both the trucking industry and local businesses & residents.

# B-10/SR 186 TI Safe Lot

B-10/SR 186 TI, I-10 Exit 336  
127 Potential  
Spaces  
Serves EB and WB  
I-10  
Total Cost \$8.9 M  
(Alternatives under  
study/consideration)



# POTENTIAL TRUCK PARKING

WILLCOX, AZ

ADOT





# Truck Parking Availability System (TPAS)

**1** Vehicle detection systems measure available parking in lots across each state



**2** Parking data goes to states and 3rd party processors



**3**\* Data is delivered to drivers

Dynamic Parking Availability Signs



Navigation Applications and Systems



State Traveler Information Website



\* Examples are for illustrative purposes only

# TPAS Locations in I-10 Coalition States

**ADOT**



## Contacts for ADOT Truck Parking Information:

**Clemenc Ligocki, Planning Group Manager - ADOT MPD**  
602-712-8143, [cligocki@azdot.gov](mailto:cligocki@azdot.gov)

**Heidi Yaqub, Freight/Regional Planner - ADOT MPD**  
602-712-7644, [hyaqub@azdot.gov](mailto:hyaqub@azdot.gov)

**Questions?**

# Questions